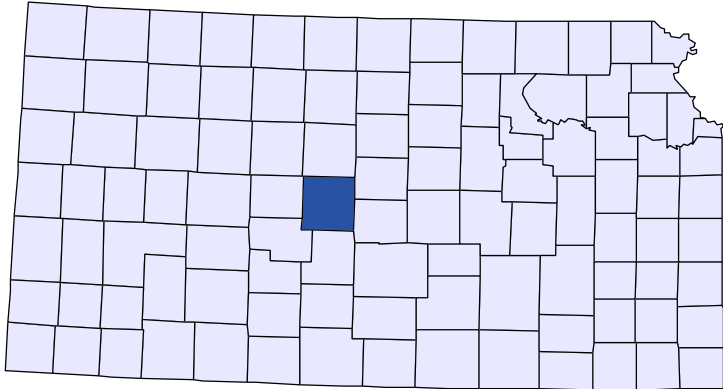




Kansas County Profiles

Barton County



The University
of Kansas

Institute for Policy
& Social Research

KU INSTITUTE FOR POLICY
& SOCIAL RESEARCH
The University of Kansas

1541 Lilac Lane, Rm. 607
Blake Hall
Lawrence, KS 66045-3129

Foreword

The Kansas County Profile Report is published by the Institute for Policy & Social Research (IPSR) at the University of Kansas with support from the KU University Center project.* Special thanks to Xanthippe Wedel, senior research data engineer, who compiles and updates the county profiles and Genna Hurd, associate researcher, who provides editorial review.

County reports can be generated for any county in Kansas by simply clicking on the county from the web site:

<http://ipsr.ku.edu/ksdata/kcced/profiles/>

The Kansas County Profile Report contains 12 categories of information: Population, Vital Statistics and Health, Housing, Education, Social Environment, Business, Employment, Income, Banking, Government, Crime, and Agriculture. For more information about Kansas, please refer to the Kansas Statistical Abstract, available online at:

<http://ipsr.ku.edu/ksdata/ksah/>

We are always looking for ways to improve the Kansas County Profile Report and we welcome your suggestions and comments. Please address any correspondence to the Institute for Policy & Social Research, The University of Kansas, 607 Blake Hall, 1541 Lilac Lane, Lawrence, Kansas 66045-3129, e-mail ipsr@ku.edu or call 785-864-3701.

**The KU University Center is a collaborative effort between the KU Center for Entrepreneurship in the School of Business and the Institute for Policy & Social Research at the University of Kansas. This project is supported by the Economic Development Administration, U.S. Department of Commerce, through its University Center Program.*

The mission of EDA is to lead the federal economic development agenda by promoting innovation and competitiveness, preparing American regions for growth and success in the worldwide economy.

Kansas County Profiles Table of Contents

Population

Total Population (Decennial Census)	1
Estimated Population (Current Population Reports)	1
Urban Population	2
Rural Population	2
Net Migration (Decade Ending...)	2
Median Age	2

Population (Age Groups)

Population Under 18 (Decennial Census)	3
Population Age 18 and Over (Decennial Census)	3
Population Age 65 and Over (Decennial Census)	3
Population Age 85 and Over (Decennial Census)	3

Vital Statistics and Health

Live Births	4
Deaths	4
Marriages	5
Divorces and Annulments	5
Physicians: M.D. Physicians	6
Physicians: D.O. Physicians	6
Dentists	6
Number of Hospitals	7
Number of Hospital Beds	7

Housing

Housing Units (Decennial Census)	7
Housing Units (Estimated)	8
Occupied Housing Units	8
Owner Occupied Housing Units	8
Renter Occupied Housing Units	8
Vacant Housing Units	9
Median Value (\$): Owner Occupied Housing Units	9
Median Contract Rent (\$)	9
Fair Market Rent: 2 Bedrooms	10

Education

Population Age 25 and Over	10
Percent of Population 25+ with High School or Higher Education	10
Percent of Population 25+ with Bachelors Degree or Higher Education	11
Public School Enrollment (FTE- School Year Beginning...)	11
Pupil/Teacher Ratio (School Year Beginning...)	12

Kansas County Profiles Table of Contents

Social Environment

Total Child Care Facilities	12
Preschools	12
Food Stamp Beneficiaries	13
Percent of Population Receiving Food Stamps	13
Estimated Number of People in Poverty	14
Estimated Percent of People in Poverty	14
Estimated Number of Related Children Age 5 to 17 in Families in Poverty	15
Estimated Percent of Related Children Age 5 to 17 in Families in Poverty	15
Estimated Number Under 18 in Poverty	16
Estimated Percent Under 18 in Poverty	16

Business

Establishments: Total	17
Establishments: 1-19 Employees	17
Establishments: 20-99 Employees	18
Establishments: 100-499 Employees	18
Establishments: 500 or More Employees	19
Establishments: Forestry, Fishing, Hunting, and Ag Support	19
Establishments: Mining	20
Establishments: Utilities	20
Establishments: Construction	21
Establishments: Manufacturing	21
Establishments: Wholesale Trade	22
Establishments: Retail Trade	22
Establishments: Transportation and Warehousing	23
Establishments: Information	23
Establishments: Finance and Insurance	24
Establishments: Real Estate, Rental, and Leasing	24
Establishments: Professional, Scientific, and Technical Services	25
Establishments: Management of Companies and Enterprises	25
Establishments: Admin, Support, Waste Management, and Remediation	26
Establishments: Educational Services	26
Establishments: Health Care and Social Assistance	27
Establishments: Arts, Entertainment, and Recreation	27
Establishments: Accommodation and Food Services	28
Establishments: Other Services	28

Kansas County Profiles Table of Contents

Business	
Total Annual Payroll (\$000)	29
Total Annual Payroll (\$000): Forestry, Fishing, Hunting, and Ag Support	29
Total Annual Payroll (\$000): Mining	30
Total Annual Payroll (\$000): Utilities	30
Total Annual Payroll (\$000): Construction	31
Total Annual Payroll (\$000): Manufacturing	31
Total Annual Payroll (\$000): Wholesale Trade	32
Total Annual Payroll (\$000): Retail Trade	32
Total Annual Payroll (\$000): Transportation and Warehousing	33
Total Annual Payroll (\$000): Information	33
Total Annual Payroll (\$000): Finance and Insurance	34
Total Annual Payroll (\$000): Real Estate, Rental, and Leasing	34
Total Annual Payroll (\$000): Professional, Scientific, and Technical Services	35
Total Annual Payroll (\$000): Management of Companies and Enterprises	35
Total Annual Payroll (\$000): Admin, Support, Waste Management, and Remediation	36
Total Annual Payroll (\$000): Educational Services	36
Total Annual Payroll (\$000): Health Care and Social Assistance	37
Total Annual Payroll (\$000): Arts, Entertainment, and Recreation	37
Total Annual Payroll (\$000): Accommodation and Food Services	38
Total Annual Payroll (\$000): Other Services	38
Nominal Taxable Retail Sales (Million\$)	39
Retail Pull Factor	39
Employment	
Civilian Labor Force (BLS - Place of Residence)	40
Employed (BLS - Place of Residence)	41
Unemployed (BLS - Place of Residence)	42
Unemployment Rate (BLS - Place of Residence)	43
BEA Employment: Total (Place of Work)	44
BEA Employment: Farm	45
BEA Employment: Non-Farm	46
Average Wage per Job (\$)	47
BEA Employment: Forestry, Fishing, Hunting, and Ag Support	47
BEA Employment: Mining	48
BEA Employment: Utilities	48
BEA Employment: Construction	49
BEA Employment: Manufacturing	49
BEA Employment: Wholesale Trade	50
BEA Employment: Retail Trade	50
BEA Employment: Transportation and Warehousing	51
BEA Employment: Information	51
BEA Employment: Finance and Insurance	52
BEA Employment: Real Estate, Rental, and Leasing	52
BEA Employment: Professional and Technical Services	53
BEA Employment: Management of Companies and Enterprises	53
BEA Employment: Administrative and Waste Services	54
BEA Employment: Educational Services	54
BEA Employment: Health Care and Social Assistance	55
BEA Employment: Arts, Entertainment, and Recreation	55
BEA Employment: Government and Government Enterprises	56
BEA Employment: Accommodation and Food Services	56
BEA Employment: Other Services, Except Public Administration	57

Kansas County Profiles Table of Contents

Income

BEA Per Capita Personal Income (\$)	57
Sources of Personal Income: Total Personal Income (\$000)	58
Sources of Personal Income: Wages And Salaries (\$000)	59
Sources of Personal Income: Proprietors-Farm (\$000)	60
Sources of Personal Income: Proprietors-Nonfarm (\$000)	61
Sources of Personal Income: Dividends, Interest, Rent (\$000)	62
Sources of Personal Income: Transfer Payments (\$000)	63
Sources of Personal Income: Less Social Insurance (\$000)	64
HUD Median Family Income	64
HUD 30% Low-To-Medium Income (LMI) Limit - 4 Persons	64
HUD 50% Low-To-Medium Income (LMI) Limit - 4 Persons	65
HUD 80% Low-To-Medium Income (LMI) Limit - 4 Persons	65

Banking

Bank Deposits (\$000)	65
Number of Banks	66
Number of Banking Offices	66

Government

Tangible Assessed Valuation (million\$)	67
Sales Tax Collections	67

Crime

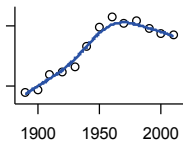
Crime Index Offenses	68
Property Crimes	68
Violent Crimes	68

Agriculture

Number of Farms	69
Total Acres Harvested	69
Value: Livestock and Poultry (\$000)	69
Value: Field Crops (\$000) Excluding Government Program Payments	70

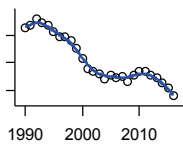
Population

DECENNIAL CENSUS:TOTAL POPULATION



U.S. Census Bureau

Year	County	State of Kansas	Non Metro Kansas	County Rank	Per 1000 or \$ Per Capita
1890	13,172	1,427,096	967,013	51	.
1900	13,784	1,470,495	981,287	50	.
1910	17,876	1,690,949	1,137,589	35	.
1920	18,422	1,769,257	1,154,858	32	.
1930	19,776	1,880,999	1,182,748	31	.
1940	25,010	1,801,028	1,100,437	17	.
1950	29,909	1,905,299	1,058,170	14	.
1960	32,368	2,178,611	1,040,331	14	.
1970	30,663	2,246,578	977,329	15	.
1980	31,343	2,363,679	1,000,977	15	.
1990	29,382	2,477,574	961,577	18	.
2000	28,205	2,688,418	978,781	20	.
2010	27,674	2,853,118	956,485	22	.



ESTIMATED POPULATION

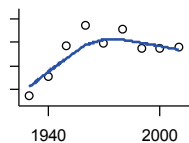
U.S. Census Bureau

Year	County	State of Kansas	Non Metro Kansas	County Rank	Per 1000 or \$ Per Capita
1990	29,270	2,481,349	960,864	18	.
1991	29,344	2,498,722	960,509	18	.
1992	29,586	2,532,394	968,355	18	.
1993	29,436	2,556,547	971,429	18	.
1994	29,363	2,580,513	976,527	19	.
1995	29,132	2,601,007	981,095	19	.
1996	28,915	2,614,554	979,387	18	.
1997	28,950	2,635,292	979,375	19	.
1998	28,790	2,660,598	980,217	19	.
1999	28,501	2,678,338	980,235	19	.
2000	28,163	2,693,681	978,390	20	.
2001	27,771	2,702,162	971,831	21	.
2002	27,684	2,713,535	965,192	20	.
2003	27,581	2,723,004	960,462	20	.
2004	27,390	2,734,373	956,333	21	.
2005	27,536	2,745,299	951,702	20	.
2006	27,460	2,762,931	948,398	22	.
2007	27,492	2,783,785	947,583	22	.
2008	27,314	2,808,076	948,632	22	.
2009	27,526	2,832,704	950,407	22	.
2010	27,683	2,858,850	957,598	22	.
2011	27,676	2,869,503	955,577	22	.
2012	27,515	2,885,262	956,240	22	.
2013	27,425	2,892,821	952,451	22	.
2014	27,262	2,899,360	947,365	22	.
2015	27,092	2,906,721	942,608	22	.
2016	26,775	2,907,289	934,433	22	.

County: county value. Kansas: state value. County Rank: highest county value ranked #1. (\$000): thousands of dollars. Nonmetro Kansas: Kansas total less Metropolitan Areas as defined by the Office of Management and Budget (OMB; released 2/28/2013). Per 1000: For nonmoney amounts, Per 1000=(county value / county population for the same year as the data) x 1000. \$ Per capita=(county value / county population for the same year as the data). Value= . indicates missing or suppressed data or value not calculated.

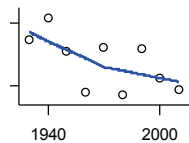
Population

URBAN POPULATION



U.S. Census Bureau: Decennial Census

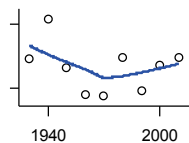
Year	County	State of Kansas	Non Metro Kansas	County Rank	Per 1000 or \$ Per Capita
1930	8,549	729,834	341,321	24	.
1940	12,763	753,941	354,522	14	.
1950	19,246	993,220	409,185	12	.
1960	23,647	1,328,741	472,565	10	.
1970	19,843	1,484,870	470,446	15	.
1980	22,794	1,575,899	492,167	14	.
1990	18,609	1,712,564	482,296	19	.
2000	18,812	1,920,081	508,836	21	.
2010	18,886	2,116,961	513,153	21	.



RURAL POPULATION

U.S. Census Bureau

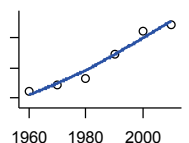
Year	County	State of Kansas	Non Metro Kansas	County Rank	Per 1000 or \$ Per Capita
1930	11,227	1,151,165	841,427	44	.
1940	12,247	1,047,087	745,915	29	.
1950	10,663	912,079	648,985	30	.
1960	8,721	849,870	567,766	35	.
1970	10,820	761,708	509,294	18	.
1980	8,549	787,780	509,367	30	.
1990	10,773	765,010	479,281	20	.
2000	9,393	768,337	470,349	25	.
2010	8,788	736,157	443,332	28	.



NET MIGRATION: DECADE ENDING...

calculated by the Institute for Policy and Social Research, The University of Kansas

Year	County	State of Kansas	Non Metro Kansas	County Rank	Per 1000 or \$ Per Capita
1930	-1,278	-66,132	-100,271	62	-64.6
1940	2,543	-192,649	-165,617	3	101.7
1950	-2,057	-84,329	-153,613	64	-68.8
1960	-4,581	-38,999	-146,885	101	-141.5
1970	-4,798	-119,662	-112,585	99	-156.5
1980	-1,053	-21,983	-14,022	98	-33.6
1990	-4,293	-61,835	-87,905	99	-146.1
2000	-1,846	68,960	-4,841	101	-65.4
2010	-1,123	5,578	-48,626	97	-40.6



MEDIAN AGE

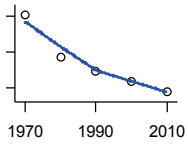
U.S. Census Bureau: Decennial Census

Year	County	State of Kansas	Non Metro Kansas	County Rank	Per 1000 or \$ Per Capita
1960	28.6	26.9	.	80	.
1970	29.8	28.7	.	77	.
1980	30.8	30.1	.	77	.
1990	34.8	32.9	.	71	.
2000	38.6	35.2	.	60	.
2010	39.7	36.0	.	70	.

County: county value. Kansas: state value. County Rank: highest county value ranked #1. (\$000): thousands of dollars. Nonmetro Kansas: Kansas total less Metropolitan Areas as defined by the Office of Management and Budget (OMB; released 2/28/2013). Per 1000: For nonmoney amounts, Per 1000=(county value / county population for the same year as the data) x 1000. \$ Per capita=(county value / county population for the same year as the data). Value= . indicates missing or suppressed data or value not calculated.

Population

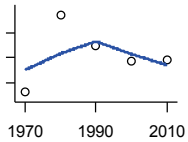
**POPULATION UNDER 18
(DECENNIAL CENSUS)**



U.S. Census Bureau: Decennial Census

Year	County	State of Kansas	Non Metro Kansas	County Rank	Per 1000 or \$ Per Capita
1970	11,046	746,354	311,386	12	.
1980	8,678	649,035	270,128	15	.
1990	7,925	661,614	256,807	19	.
2000	7,330	712,993	256,660	22	.
2010	6,784	726,939	237,930	22	.

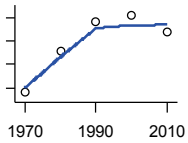
**POPULATION AGE 18 AND OVER
(DECENNIAL CENSUS)**



U.S. Census Bureau: Decennial Census

Year	County	State of Kansas	Non Metro Kansas	County Rank	Per 1000 or \$ Per Capita
1970	19,617	1,500,224	668,354	16	.
1980	22,695	1,714,282	731,286	15	.
1990	21,457	1,815,960	704,770	18	.
2000	20,875	1,975,425	722,525	20	.
2010	20,890	2,126,179	718,555	22	.

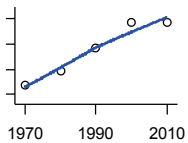
**POPULATION AGE 65 AND OVER
(DECENNIAL CENSUS)**



U.S. Census Bureau: Decennial Census

Year	County	State of Kansas	Non Metro Kansas	County Rank	Per 1000 or \$ Per Capita
1970	3,403	266,201	149,407	19	.
1980	4,282	306,263	165,380	16	.
1990	4,913	342,571	169,275	14	.
2000	5,043	356,229	162,706	15	.
2010	4,688	376,116	155,272	16	.

**POPULATION AGE 85 AND OVER
(DECENNIAL CENSUS)**



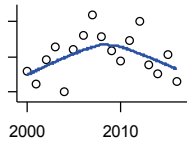
U.S. Census Bureau: Decennial Census

Year	County	State of Kansas	Non Metro Kansas	County Rank	Per 1000 or \$ Per Capita
1970	274	23,899	13,734	25	.
1980	387	33,455	18,831	23	.
1990	565	42,241	22,993	18	.
2000	764	51,770	26,654	15	.
2010	768	59,318	26,250	16	.

County: county value. Kansas: state value. County Rank: highest county value ranked #1. (\$000): thousands of dollars. Nonmetro Kansas: Kansas total less Metropolitan Areas as defined by the Office of Management and Budget (OMB; released 2/28/2013). Per 1000: For nonmoney amounts, Per 1000=(county value / county population for the same year as the data) x 1000. \$ Per capita=(county value / county population for the same year as the data). Value= . indicates missing or suppressed data or value not calculated.

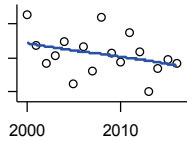
Vital Statistics and Health

BIRTHS (LIVE)



Kansas Department of Health and Environment

Year	County	State of Kansas	Non Metro Kansas	County Rank	Per 1000 or \$ Per Capita
2000	343	39,654	13,444	23	12.2
2001	328	38,832	13,042	25	11.8
2002	357	39,338	12,961	21	12.9
2003	371	39,353	12,873	21	13.5
2004	319	39,553	12,817	24	11.6
2005	368	39,701	12,837	22	13.4
2006	384	40,896	13,272	21	14.0
2007	408	41,951	13,671	20	14.8
2008	383	41,815	13,682	22	14.0
2009	366	41,388	13,743	22	13.3
2010	355	40,439	13,172	23	12.8
2011	379	39,628	12,957	22	13.7
2012	401	40,304	13,197	21	14.6
2013	350	38,805	12,816	22	12.8
2014	340	39,193	13,031	23	12.5
2015	362	39,126	12,856	22	13.4
2016	331	38,048	12,360	23	12.4



DEATHS

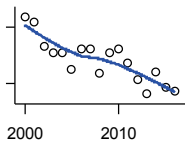
Kansas Department of Health and Environment

Year	County	State of Kansas	Non Metro Kansas	County Rank	Per 1000 or \$ Per Capita
2000	351	24,676	11,273	14	12.4
2001	315	24,590	10,897	16	11.3
2002	294	24,968	11,166	17	10.6
2003	302	24,417	10,701	15	10.9
2004	320	23,720	10,430	16	11.7
2005	270	24,632	10,674	20	9.8
2006	313	24,489	10,636	15	11.4
2007	285	24,413	10,651	18	10.4
2008	348	24,896	10,712	15	12.7
2009	305	23,997	10,051	16	11.1
2010	295	24,428	10,228	16	10.7
2011	330	25,114	10,626	17	11.9
2012	307	25,084	10,349	16	11.2
2013	261	25,347	10,349	17	9.5
2014	287	25,731	10,360	17	10.5
2015	298	26,611	10,662	18	11.0
2016	294	26,129	10,359	18	11.0

County: county value. Kansas: state value. County Rank: highest county value ranked #1. (\$000): thousands of dollars. Nonmetro Kansas: Kansas total less Metropolitan Areas as defined by the Office of Management and Budget (OMB; released 2/28/2013). Per 1000: For nonmoney amounts, Per 1000=(county value / county population for the same year as the data) x 1000. \$ Per capita=(county value / county population for the same year as the data). Value= . indicates missing or suppressed data or value not calculated.

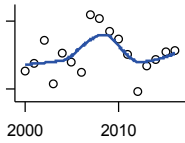
Vital Statistics and Health

MARRIAGES



Kansas Department of Health and Environment

Year	County	State of Kansas	Non Metro Kansas	County Rank	Per 1000 or \$ Per Capita
2000	251	20,426	7,726	18	8.9
2001	246	20,457	7,897	19	8.9
2002	220	19,783	7,256	20	7.9
2003	212	18,722	6,918	20	7.7
2004	213	19,174	7,215	20	7.8
2005	194	18,745	6,914	21	7.0
2006	216	18,836	6,964	20	7.9
2007	216	18,910	6,982	22	7.9
2008	191	18,717	6,858	23	7.0
2009	212	18,268	6,619	19	7.7
2010	216	18,150	6,569	19	7.8
2011	202	17,897	6,484	19	7.3
2012	183	18,154	6,396	21	6.7
2013	168	17,328	6,095	24	6.1
2014	192	17,655	6,021	20	7.0
2015	176	17,595	5,886	21	6.5
2016	171	17,948	5,797	22	6.4



DIVORCES AND ANNULMENTS

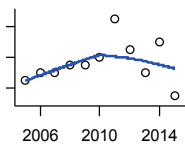
Kansas Department of Health and Environment

Year	County	State of Kansas	Non Metro Kansas	County Rank	Per 1000 or \$ Per Capita
2000	56	10,105	4,198	32	2.0
2001	62	9,885	4,022	28	2.2
2002	83	9,645	3,924	26	3.0
2003	44	8,644	3,637	36	1.6
2004	72	8,759	3,682	25	2.6
2005	64	8,476	3,434	28	2.3
2006	54	9,145	3,551	32	2.0
2007	106	9,347	3,663	18	3.9
2008	102	9,818	4,030	23	3.7
2009	91	10,333	3,801	25	3.3
2010	84	10,579	3,885	28	3.0
2011	70	10,445	3,696	28	2.5
2012	37	9,782	3,389	39	1.3
2013	60	9,085	3,305	30	2.2
2014	66	8,441	2,958	25	2.4
2015	73	8,036	3,026	24	2.7
2016	74	7,198	2,763	21	2.8

County: county value. Kansas: state value. County Rank: highest county value ranked #1. (\$000): thousands of dollars. Nonmetro Kansas: Kansas total less Metropolitan Areas as defined by the Office of Management and Budget (OMB; released 2/28/2013). Per 1000: For nonmoney amounts, Per 1000=(county value / county population for the same year as the data) x 1000. \$ Per capita=(county value / county population for the same year as the data). Value= . indicates missing or suppressed data or value not calculated.

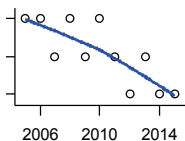
Vital Statistics and Health

PHYSICIANS: M.D. PHYSICIANS



Kansas Department of Health and Environment (1981-2005,2010 -);Kansas Health Policy Authority (2006-2009)

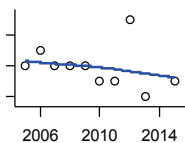
Year	County	State of Kansas	Non Metro Kansas	County Rank	Per 1000 or \$ Per Capita
2005	29	4,241	923	18	1.1
2006	30	4,310	968	19	1.1
2007	30	5,309	1,060	21	1.1
2008	31	5,110	1,033	20	1.1
2009	31	5,249	1,011	19	1.1
2010	32	5,192	995	17	1.2
2011	37	5,243	1,009	16	1.3
2012	33	5,693	1,056	18	1.2
2013	30	6,106	1,096	18	1.1
2014	34	5,839	968	15	1.2
2015	27	5,703	871	19	1.0



PHYSICIANS: D.O. PHYSICIANS

Kansas Department of Health and Environment (1981-2005,2010 -);Kansas Health Policy Authority (2006-2009)

Year	County	State of Kansas	Non Metro Kansas	County Rank	Per 1000 or \$ Per Capita
2005	7	553	173	15	0.3
2006	7	508	170	13	0.3
2007	6	569	169	18	0.2
2008	7	558	165	16	0.3
2009	6	564	159	17	0.2
2010	7	583	167	14	0.3
2011	6	502	149	15	0.2
2012	5	718	200	25	0.2
2013	6	829	208	22	0.2
2014	5	817	190	22	0.2
2015	5	819	191	22	0.2



DENTISTS

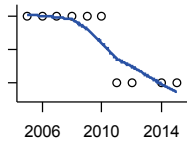
Kansas Department of Health and Environment (1981-2006,2010 -);Kansas Health Policy Authority (2007-2009)

Year	County	State of Kansas	Non Metro Kansas	County Rank	Per 1000 or \$ Per Capita
2005	12	1,347	377	21	0.4
2006	13	1,381	377	18	0.5
2007	12	1,335	366	21	0.4
2008	12	1,392	370	22	0.4
2009	12	1,353	367	22	0.4
2010	11	1,401	380	21	0.4
2011	11	1,338	359	20	0.4
2012	15	1,434	413	17	0.5
2013	10	1,212	337	21	0.4
2015	11	1,240	336	21	0.4

County: county value. Kansas: state value. County Rank: highest county value ranked #1. (\$000): thousands of dollars. Nonmetro Kansas: Kansas total less Metropolitan Areas as defined by the Office of Management and Budget (OMB; released 2/28/2013). Per 1000: For nonmoney amounts, Per 1000=(county value / county population for the same year as the data) x 1000. \$ Per capita=(county value / county population for the same year as the data). Value= . indicates missing or suppressed data or value not calculated.

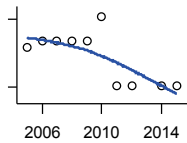
Vital Statistics and Health

NUMBER OF HOSPITALS



American Hospital Association, American Hospital Association Guide to the Health Care Field

Year	County	State of Kansas	Non Metro Kansas	County Rank	Per 1000 or \$ Per Capita
2005	4	158	106	4	.
2006	4	158	106	4	.
2007	4	159	105	4	.
2008	4	159	105	4	.
2009	4	158	106	4	.
2010	4	158	105	5	.
2011	3	158	104	7	.
2012	3	157	104	7	.
2014	3	156	.	7	.
2015	3	155	104	6	.



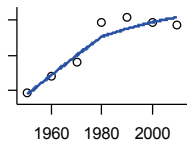
NUMBER OF HOSPITAL BEDS

Kansas Department of Health and Environment

Year	County	State of Kansas	Non Metro Kansas	County Rank	Per 1000 or \$ Per Capita
2005	115	12,389	5,749	22	4.2
2006	120	11,992	5,593	20	4.4
2007	120	12,171	5,725	21	4.4
2008	120	12,332	5,788	21	4.4
2009	120	12,283	5,740	19	4.4
2010	142	12,218	5,605	15	5.1
2011	81	12,182	5,419	33	2.9
2012	81	12,002	5,439	32	2.9
2014	81	12,034	.	33	3.0
2015	81	11,926	5,407	29	3.0

Housing

HOUSING UNITS (DECENNIAL)



U.S. Census Bureau: Decennial Census

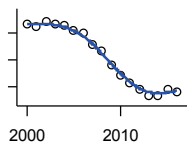
Year	County	State of Kansas	Non Metro Kansas	County Rank	Per 1000 or \$ Per Capita
1950	8,853	586,650	331,125	14	296.0
1960	9,846	672,899	334,084	14	304.2
1970	10,636	789,735	369,247	15	346.9
1980	12,871	955,207	424,284	15	410.6
1990	13,144	1,044,112	425,369	15	447.3
2000	12,888	1,131,395	430,325	17	456.9
2010	12,696	1,233,215	434,749	21	458.8

County: county value. Kansas: state value. County Rank: highest county value ranked #1. (\$000): thousands of dollars. Nonmetro Kansas: Kansas total less Metropolitan Areas as defined by the Office of Management and Budget (OMB; released 2/28/2013). Per 1000: For nonmoney amounts, Per 1000=(county value / county population for the same year as the data) x 1000. \$ Per capita=(county value / county population for the same year as the data). Value= . indicates missing or suppressed data or value not calculated.

Housing

HOUSING UNITS (ESTIMATED)

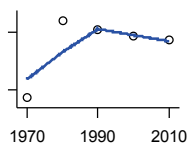
Year	County	State of Kansas	Non Metro Kansas	County Rank	Per 1000 or \$ Per Capita
2000	12,882	1,134,529	430,630	17	456.7
2001	12,871	1,146,858	431,936	17	463.5
2002	12,891	1,160,129	433,107	17	465.6
2003	12,880	1,171,620	433,904	17	467.0
2004	12,874	1,184,702	434,529	17	470.0
2005	12,858	1,195,791	434,871	17	467.0
2006	12,849	1,206,692	434,600	17	467.9
2007	12,807	1,217,608	435,429	19	465.8
2008	12,781	1,225,625	435,999	19	467.9
2009	12,730	1,230,552	435,276	20	462.5
2010	12,693	1,234,216	434,867	21	458.7
2011	12,666	1,236,668	434,924	21	457.7
2012	12,643	1,239,534	435,145	21	459.5
2013	12,618	1,243,225	435,353	21	460.1
2014	12,617	1,248,944	435,597	21	462.8
2015	12,641	1,253,831	435,843	21	466.6
2016	12,634	1,259,864	436,102	21	471.9



U.S. Census Bureau

OCCUPIED HOUSING UNITS

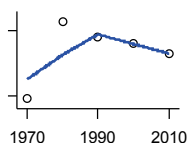
Year	County	State of Kansas	Non Metro Kansas	County Rank	Per 1000 or \$ Per Capita
1970	9,796	727,364	331,872	15	319.5
1980	11,797	872,239	378,404	15	376.4
1990	11,561	944,726	373,402	16	393.5
2000	11,393	1,037,891	382,400	17	403.9
2010	11,283	1,112,096	379,732	21	407.7



U.S. Census Bureau: Decennial Census

OWNER OCCUPIED HOUSING UNITS

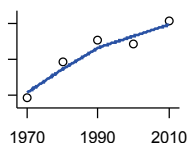
Year	County	State of Kansas	Non Metro Kansas	County Rank	Per 1000 or \$ Per Capita
1970	6,915	502,585	238,292	13	225.5
1980	8,716	612,433	279,387	14	278.1
1990	8,357	641,762	265,553	14	284.4
2000	8,212	718,703	274,004	18	291.2
2010	7,971	753,532	265,198	18	288.0



U.S. Census Bureau: Decennial Census

RENTER OCCUPIED HOUSING UNITS

Year	County	State of Kansas	Non Metro Kansas	County Rank	Per 1000 or \$ Per Capita
1970	2,881	224,779	93,580	16	94.0
1980	3,081	259,806	99,017	17	98.3
1990	3,204	302,964	107,849	20	109.0
2000	3,181	319,188	108,396	20	112.8
2010	3,312	358,564	114,534	20	119.7



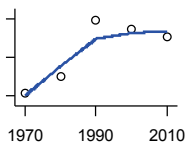
U.S. Census Bureau: Decennial Census

County: county value. Kansas: state value. County Rank: highest county value ranked #1. (\$000): thousands of dollars. Nonmetro Kansas: Kansas total less Metropolitan Areas as defined by the Office of Management and Budget (OMB; released 2/28/2013). Per 1000: For nonmoney amounts, Per 1000=(county value / county population for the same year as the data) x 1000. \$ Per capita=(county value / county population for the same year as the data). Value= . indicates missing or suppressed data or value not calculated.

Housing

VACANT HOUSING UNITS

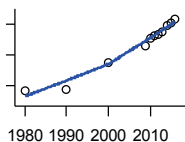
Year	County	State of Kansas	Non Metro Kansas	County Rank	Per 1000 or \$ Per Capita
1970	831	60,058	36,002	16	27.1
1980	1,007	77,912	42,286	17	32.1
1990	1,583	99,386	51,967	12	53.9
2000	1,495	93,309	47,924	12	53.0
2010	1,413	121,119	55,017	17	51.1



U.S. Census Bureau: Decennial Census

MEDIAN VALUE (\$): OWNER OCCUPIED HOUSING UNITS

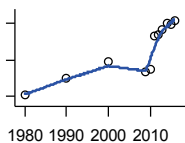
Year	County	State of Kansas	Non Metro Kansas	County Rank	Per 1000 or \$ Per Capita
1980	37,000	37,800	.	15	.
1990	37,700	52,200	.	38	.
2000	55,500	83,500	.	48	.
2009	65,900	118,500	.	68	.
2010	71,000	122,600	.	62	.
2011	72,500	125,500	.	60	.
2012	73,600	127,400	.	60	.
2013	75,300	128,400	.	61	.
2014	79,800	129,400	.	59	.
2015	81,200	132,000	.	63	.
2016	83,700	135,300	.	60	.



U.S. Census Bureau, Decennial Census (- 2000), (2009 -) American Community Survey five-year average ending in year shown. Please see source for sampling variability.

MEDIAN CONTRACT RENT (\$)

Year	County	State of Kansas	Non Metro Kansas	County Rank	Per 1000 or \$ Per Capita
1980	208	219	.	14	.
1990	299	372	.	31	.
2000	390	498	.	43	.
2009	335	491	.	53	.
2010	350	507	.	48	.
2011	531	699	.	58	.
2012	538	715	.	60	.
2013	564	732	.	54	.
2014	603	748	.	48	.
2015	591	757	.	57	.
2016	615	775	.	51	.

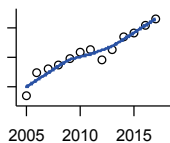


U.S. Census Bureau, Decennial Census (- 2000), (2009 -) American Community Survey five-year average ending in year shown. Please see source for sampling variability.

County: county value. Kansas: state value. County Rank: highest county value ranked #1. (\$000): thousands of dollars. Nonmetro Kansas: Kansas total less Metropolitan Areas as defined by the Office of Management and Budget (OMB; released 2/28/2013). Per 1000: For nonmoney amounts, Per 1000=(county value / county population for the same year as the data) x 1000. \$ Per capita=(county value / county population for the same year as the data). Value= . indicates missing or suppressed data or value not calculated.

Housing

FAIR MARKET RENT: 2 BEDROOMS

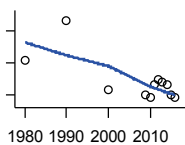


U.S. Department of Housing and Urban Development (HUD)

Year	County	State of Kansas	Non Metro Kansas	County Rank	Per 1000 or \$ Per Capita
2005	419	.	.	105	.
2006	497	.	.	105	.
2007	512	.	.	105	.
2008	525	628	.	105	.
2009	547	653	.	105	.
2010	566	678	.	105	.
2011	575	684	.	105	.
2012	540	660	.	105	.
2013	577	712	.	105	.
2014	622	746	.	105	.
2015	634	756	.	105	.
2016	658	781	.	105	.
2017	681	811	.	105	.

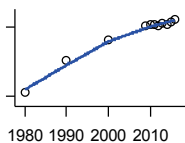
Education

POPULATION AGE 25+



U.S. Census Bureau, Decennial Census (- 2000), (2009 -) American Community Survey five-year average ending in year shown. Please see source for sampling variability.

Year	County	State of Kansas	Non Metro Kansas	County Rank	Per 1000 or \$ Per Capita
1980	18,636	1,388,102	605,087	.	.
1990	19,121	1,565,936	619,414	.	.
2000	18,265	1,701,207	628,066	.	.
2009	18,213	1,775,427	611,454	.	.
2010	18,170	1,802,904	620,506	.	.
2011	18,326	1,822,400	623,005	.	.
2012	18,389	1,838,079	624,655	.	.
2013	18,360	1,850,010	624,322	.	.
2014	18,326	1,861,894	623,875	.	.
2015	18,207	1,869,698	621,194	.	.
2016	18,177	1,878,495	618,736	.	.



PERCENT HS GRADUATE OR HIGHER AGE 25+

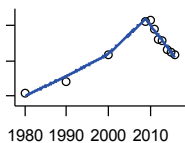
U.S. Census Bureau, Decennial Census (- 2000), (2009 -) American Community Survey five-year average ending in year shown. Please see source for sampling variability.

Year	County	State of Kansas	Non Metro Kansas	County Rank	Per 1000 or \$ Per Capita
1980	70.8	73.3	.	46	.
1990	78.0	81.3	.	47	.
2000	82.3	86.0	.	79	.
2009	85.3	89.0	.	85	.
2010	85.6	89.2	.	90	.
2011	85.6	89.5	.	90	.
2012	85.4	89.7	.	90	.
2013	86.0	89.8	.	89	.
2014	85.8	90.0	.	90	.
2015	86.1	90.2	.	88	.
2016	86.8	90.3	.	89	.

County: county value. Kansas: state value. County Rank: highest county value ranked #1. (\$000): thousands of dollars. Nonmetro Kansas: Kansas total less Metropolitan Areas as defined by the Office of Management and Budget (OMB; released 2/28/2013). Per 1000: For nonmoney amounts, Per 1000=(county value / county population for the same year as the data) x 1000. \$ Per capita=(county value / county population for the same year as the data). Value= . indicates missing or suppressed data or value not calculated.

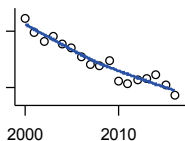
Education

PERCENT BACHELORS DEGREE OR HIGHER AGE 25+



U.S. Census Bureau, Decennial Census (- 2000), (2009 -) American Community Survey five-year average ending in year shown. Please see source for sampling variability.

Year	County	State of Kansas	Non Metro Kansas	County Rank	Per 1000 or \$ Per Capita
1980	12.4	17.0	.	42	.
1990	13.6	21.1	.	50	.
2000	16.6	25.8	.	56	.
2009	20.4	28.8	.	36	.
2010	20.5	29.3	.	34	.
2011	19.6	29.7	.	50	.
2012	18.4	30.0	.	68	.
2013	18.3	30.3	.	69	.
2014	17.3	30.7	.	86	.
2015	16.9	31.0	.	90	.
2016	16.7	31.6	.	93	.



PUBLIC SCHOOL ENROLLMENT (FTE) SCHOOL YEAR BEGINNING...

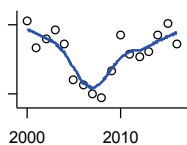
Kansas State Department of Education

Year	County	State of Kansas	Non Metro Kansas	County Rank	Per 1000 or \$ Per Capita
2000	4,731.8	448,150.8	171,372.6	21	167.8
2001	4,586.5	447,047.1	168,923.6	23	165.2
2002	4,492.5	444,860.3	166,214.9	23	162.3
2003	4,537.2	443,620.6	163,731.2	23	164.5
2004	4,464.1	441,957.2	161,296.7	23	163.0
2005	4,424.2	442,708.4	159,830.5	23	160.7
2006	4,326.4	444,878.7	159,058.4	23	157.6
2007	4,249.3	446,831.3	158,114.1	23	154.6
2008	4,228.1	447,730.0	156,605.8	23	154.8
2009	4,278.8	453,202.5	157,585.3	23	155.4
2010	4,075.8	455,405.0	157,244.1	23	147.3
2011	4,048.2	456,000.5	157,329.8	23	146.3
2012	4,087.7	458,496.4	156,971.7	23	148.6
2013	4,101.9	461,950.0	157,164.3	23	149.6
2014	4,137.9	464,395.4	157,711.1	23	151.8
2015	4,032.8	463,504.0	155,778.7	23	148.9
2016	3,915.5	459,920.3	153,506.2	23	146.2

County: county value. Kansas: state value. County Rank: highest county value ranked #1. (\$000): thousands of dollars. Nonmetro Kansas: Kansas total less Metropolitan Areas as defined by the Office of Management and Budget (OMB; released 2/28/2013). Per 1000: For nonmoney amounts, Per 1000=(county value / county population for the same year as the data) x 1000. \$ Per capita=(county value / county population for the same year as the data). Value= . indicates missing or suppressed data or value not calculated.

Education

PUPIL/TEACHER RATIO SCHOOL YEAR BEGINNING...

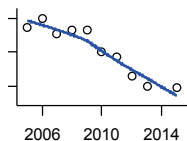


Kansas State Department of Education

Year	County	State of Kansas	Non Metro Kansas	County Rank	Per 1000 or \$ Per Capita
2000	15.1	15.4	14.0	18	.
2001	14.5	15.3	13.9	27	.
2002	14.7	15.4	14.0	27	.
2003	14.9	15.5	13.9	24	.
2004	14.6	15.3	13.7	24	.
2005	13.8	15.0	13.5	32	.
2006	13.7	14.7	13.3	30	.
2007	13.5	14.6	13.2	31	.
2008	13.4	14.4	13.0	26	.
2009	14.0	14.8	13.4	28	.
2010	14.8	15.2	13.7	23	.
2011	14.4	15.1	13.6	29	.
2012	14.3	15.1	13.6	28	.
2013	14.4	15.1	13.6	24	.
2014	14.8	15.0	13.7	19	.
2015	15.0	15.2	13.9	18	.
2016	14.6	15.1	13.8	25	.

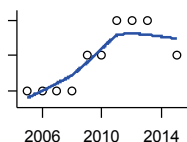
Social Environment

CHILD CARE FACILITIES: TOTAL CHILD CARE FACILITIES



Kansas Department of Health and Environment, Bureau of Adult and Child Care

Year	County	State of Kansas	Non Metro Kansas	County Rank	Per 1000 or \$ Per Capita
2005	105	8,258	3,421	17	3.8
2006	110	8,442	3,475	17	4.0
2007	101	8,241	3,377	19	3.7
2008	103	8,011	3,202	16	3.8
2009	103	7,853	3,110	15	3.7
2010	90	7,354	2,892	17	3.3
2011	87	6,835	2,670	16	3.1
2012	76	6,346	2,454	17	2.8
2013	70	5,754	2,218	17	2.6
2015	69	5,289	2,180	17	2.5



CHILD CARE FACILITIES: PRESCHOOLS

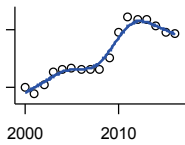
Kansas Department of Health and Environment, Bureau of Adult and Child Care

Year	County	State of Kansas	Non Metro Kansas	County Rank	Per 1000 or \$ Per Capita
2005	2	243	138	46	0.1
2006	2	221	125	42	0.1
2007	2	208	117	42	0.1
2008	2	204	112	46	0.1
2009	3	194	105	27	0.1
2010	3	194	109	27	0.1
2011	4	209	121	17	0.1
2012	4	201	120	14	0.1
2013	4	140	83	8	0.1
2015	3	185	114	25	0.1

County: county value. Kansas: state value. County Rank: highest county value ranked #1. (\$000): thousands of dollars. Nonmetro Kansas: Kansas total less Metropolitan Areas as defined by the Office of Management and Budget (OMB; released 2/28/2013). Per 1000: For nonmoney amounts, Per 1000=(county value / county population for the same year as the data) x 1000. \$ Per capita=(county value / county population for the same year as the data). Value= . indicates missing or suppressed data or value not calculated.

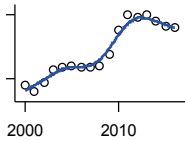
Social Environment

FOOD STAMP BENEFICIARIES



Kansas Social and Rehabilitation Services

Year	County	State of Kansas	Non Metro Kansas	County Rank	Per 1000 or \$ Per Capita
2000	1,508	110,619	46,134	17	53.5
2001	1,338	117,241	48,177	19	48.2
2002	1,579	131,726	54,053	18	57.0
2003	1,912	155,908	63,289	18	69.3
2004	1,968	167,971	67,676	19	71.9
2005	2,006	175,710	69,180	19	72.9
2006	1,977	182,821	69,456	20	72.0
2007	1,962	184,035	68,589	20	71.4
2008	1,986	187,377	68,772	20	72.7
2009	2,276	208,007	75,437	19	82.7
2010	2,928	259,609	93,167	19	105.8
2011	3,334	296,542	103,737	18	120.5
2012	3,262	303,257	105,060	21	118.6
2013	3,279	316,424	108,240	21	119.6
2014	3,105	301,377	103,836	22	113.9
2015	2,944	277,614	95,990	21	108.7
2016	2,904	258,412	90,907	19	108.5



PERCENT OF POPULATION RECEIVING FOOD STAMPS

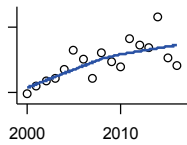
U.S. Dept. of Agriculture Food and Nutrition Service (1990-1997); Kansas Social and Rehabilitation Services (1998-)

Year	County	State of Kansas	Non Metro Kansas	County Rank	Per 1000 or \$ Per Capita
2000	5.4	4.1	.	24	.
2001	4.8	4.3	.	32	.
2002	5.7	4.9	.	27	.
2003	6.9	5.7	.	27	.
2004	7.1	6.2	.	28	.
2005	7.2	6.4	.	31	.
2006	7.1	6.6	.	31	.
2007	7.1	6.6	.	28	.
2008	7.2	6.7	.	27	.
2009	8.3	7.4	.	26	.
2010	10.6	9.1	.	26	.
2011	12.0	10.3	.	23	.
2012	11.8	10.5	.	23	.
2013	12.0	10.9	.	24	.
2014	11.4	10.4	.	25	.
2015	10.9	9.6	.	26	.
2016	10.8	8.9	.	20	.

County: county value. Kansas: state value. County Rank: highest county value ranked #1. (\$000): thousands of dollars. Nonmetro Kansas: Kansas total less Metropolitan Areas as defined by the Office of Management and Budget (OMB; released 2/28/2013). Per 1000: For nonmoney amounts, Per 1000=(county value / county population for the same year as the data) x 1000. \$ Per capita=(county value / county population for the same year as the data). Value= . indicates missing or suppressed data or value not calculated.

Social Environment

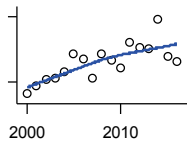
ESTIMATED NUMBER OF PEOPLE IN POVERTY



U.S. Census Bureau, Small Area Income and Poverty Estimates

Year	County	State of Kansas	Non Metro Kansas	County Rank	Per 1000 or \$ Per Capita
2000	2,973	235,087	101,119	18	105.4
2001	3,159	252,134	108,152	17	113.8
2002	3,282	265,673	109,391	17	118.6
2003	3,320	278,163	109,636	17	120.4
2004	3,539	297,733	113,822	17	129.2
2005	3,973	310,667	120,984	17	144.3
2006	3,769	327,102	125,616	19	137.3
2007	3,340	301,828	113,972	18	121.5
2008	3,923	307,804	115,439	17	143.6
2009	3,720	359,692	126,159	18	135.1
2010	3,587	374,677	134,695	21	129.6
2011	4,245	383,859	139,420	21	153.4
2012	4,088	392,095	137,670	19	148.6
2013	4,028	391,718	138,892	19	146.9
2014	4,739	381,506	134,343	18	173.8
2015	3,804	366,069	126,517	18	140.4
2016	3,621	343,773	124,567	19	135.2

ESTIMATED % OF PEOPLE IN POVERTY

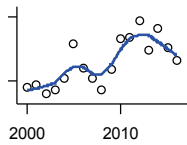


U.S. Census Bureau, Small Area Income and Poverty Estimates

Year	County	State of Kansas	Non Metro Kansas	County Rank	Per 1000 or \$ Per Capita
2000	10.9	8.9	.	43	.
2001	11.7	9.5	.	42	.
2002	12.2	10.0	.	33	.
2003	12.4	10.4	.	26	.
2004	12.9	11.1	.	24	.
2005	14.6	11.7	.	19	.
2006	14.1	12.2	.	32	.
2007	12.4	11.2	.	35	.
2008	14.6	11.3	.	15	.
2009	14.0	13.2	.	32	.
2010	13.3	13.5	.	43	.
2011	15.7	13.8	.	24	.
2012	15.2	14.0	.	27	.
2013	15.0	13.9	.	29	.
2014	17.8	13.5	.	12	.
2015	14.4	12.9	.	25	.
2016	13.9	12.2	.	30	.

County: county value. Kansas: state value. County Rank: highest county value ranked #1. (\$000): thousands of dollars. Nonmetro Kansas: Kansas total less Metropolitan Areas as defined by the Office of Management and Budget (OMB; released 2/28/2013). Per 1000: For nonmoney amounts, Per 1000=(county value / county population for the same year as the data) x 1000. \$ Per capita=(county value / county population for the same year as the data). Value= . indicates missing or suppressed data or value not calculated.

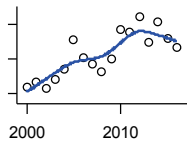
Social Environment



EST. NUMBER OF RELATED CHILDREN AGE 5 TO 17 IN FAMILIES IN POVERTY

U.S. Census Bureau, Small Area Income and Poverty Estimates

Year	County	State of Kansas	Non Metro Kansas	County Rank	Per 1000 or \$ Per Capita
2000	667	50,388	22,492	20	23.6
2001	682	53,755	23,775	20	24.6
2002	637	52,453	22,047	20	23.0
2003	657	55,419	22,351	20	23.8
2004	714	59,392	22,864	19	26.1
2005	874	60,203	24,754	17	31.7
2006	762	64,427	25,910	19	27.7
2007	714	61,149	24,225	20	26.0
2008	660	59,842	23,283	20	24.2
2009	752	71,850	26,851	21	27.3
2010	899	81,077	30,633	20	32.5
2011	904	82,311	30,957	22	32.7
2012	984	87,594	31,448	19	35.8
2013	844	84,325	30,757	20	30.8
2014	946	83,873	30,672	19	34.7
2015	854	78,192	28,814	19	31.5
2016	796	67,810	26,003	19	29.7



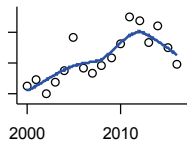
EST. % OF RELATED CHILDREN AGE 5 TO 17 IN FAMILIES IN POVERTY

U.S. Census Bureau, Small Area Income and Poverty Estimates

Year	County	State of Kansas	Non Metro Kansas	County Rank	Per 1000 or \$ Per Capita
2000	12.8	10.0	.	47	.
2001	13.4	10.8	.	53	.
2002	12.6	10.5	.	44	.
2003	13.7	11.3	.	32	.
2004	14.8	12.5	.	24	.
2005	18.3	12.8	.	13	.
2006	16.2	13.2	.	36	.
2007	15.4	12.6	.	38	.
2008	14.5	12.3	.	46	.
2009	16.1	14.7	.	41	.
2010	19.4	15.9	.	28	.
2011	19.1	16.2	.	24	.
2012	20.9	17.2	.	22	.
2013	17.9	16.5	.	36	.
2014	20.3	16.4	.	22	.
2015	18.4	15.3	.	28	.
2016	17.3	13.2	.	24	.

County: county value. Kansas: state value. County Rank: highest county value ranked #1. (\$000): thousands of dollars. Nonmetro Kansas: Kansas total less Metropolitan Areas as defined by the Office of Management and Budget (OMB; released 2/28/2013). Per 1000: For nonmoney amounts, Per 1000=(county value / county population for the same year as the data) x 1000. \$ Per capita=(county value / county population for the same year as the data). Value= . indicates missing or suppressed data or value not calculated.

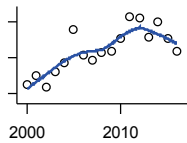
Social Environment



ESTIMATED NUMBER UNDER 18 IN POVERTY

U.S. Census Bureau, Small Area Income and Poverty Estimates

Year	County	State of Kansas	Non Metro Kansas	County Rank	Per 1000 or \$ Per Capita
2000	1,052	82,619	35,953	20	37.3
2001	1,089	87,487	37,913	20	39.2
2002	994	84,181	33,951	20	35.9
2003	1,073	93,896	37,037	20	38.9
2004	1,148	98,641	37,311	19	41.9
2005	1,372	100,254	40,073	18	49.8
2006	1,169	105,193	41,941	19	42.6
2007	1,130	100,242	38,947	20	41.1
2008	1,180	100,146	38,623	20	43.2
2009	1,233	118,187	43,748	21	44.8
2010	1,328	129,009	47,784	20	48.0
2011	1,505	133,478	49,317	21	54.4
2012	1,482	135,261	48,749	19	53.9
2013	1,336	131,251	47,405	20	48.7
2014	1,443	125,562	45,887	20	52.9
2015	1,298	119,994	43,755	20	47.9
2016	1,190	100,996	38,861	19	44.4



ESTIMATED PERCENT UNDER 18 IN POVERTY

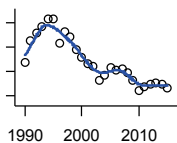
U.S. Census Bureau, Small Area Income and Poverty Estimates

Year	County	State of Kansas	Non Metro Kansas	County Rank	Per 1000 or \$ Per Capita
2000	15.0	11.9	.	45	.
2001	16.0	12.7	.	45	.
2002	14.7	12.1	.	34	.
2003	16.5	13.8	.	30	.
2004	17.4	14.6	.	25	.
2005	21.2	15.2	.	16	.
2006	18.3	15.4	.	39	.
2007	17.7	14.7	.	36	.
2008	18.6	14.6	.	29	.
2009	18.8	17.1	.	40	.
2010	20.1	18.1	.	34	.
2011	22.6	18.8	.	22	.
2012	22.5	19.0	.	24	.
2013	20.3	18.4	.	32	.
2014	22.0	17.6	.	19	.
2015	20.1	16.9	.	27	.
2016	18.8	14.3	.	24	.

County: county value. Kansas: state value. County Rank: highest county value ranked #1. (\$000): thousands of dollars. Nonmetro Kansas: Kansas total less Metropolitan Areas as defined by the Office of Management and Budget (OMB; released 2/28/2013). Per 1000: For nonmoney amounts, Per 1000=(county value / county population for the same year as the data) x 1000. \$ Per capita=(county value / county population for the same year as the data). Value= . indicates missing or suppressed data or value not calculated.

Business

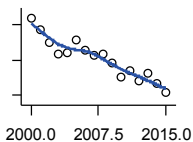
ESTABLISHMENTS TOTAL COUNTY BUSINESS PATTERNS



U.S. Census Bureau, County Business Patterns

Year	County	State of Kansas	Non Metro Kansas	County Rank	Per 1000 or \$ Per Capita
1990	1,019	65,858	27,195	10	34.7
1991	1,063	65,941	27,141	9	36.2
1992	1,080	67,630	27,632	9	36.5
1993	1,093	68,930	28,051	9	37.1
1994	1,108	69,822	28,143	10	37.7
1995	1,107	70,894	28,487	10	38.0
1996	1,057	72,017	28,720	11	36.6
1997	1,082	73,924	29,262	12	37.4
1998	1,070	74,019	29,104	11	37.2
1999	1,046	74,486	28,897	11	36.7
2000	1,029	74,939	28,844	12	36.5
2001	1,016	74,565	28,646	12	36.6
2002	1,012	75,077	28,460	13	36.6
2003	982	74,972	28,279	14	35.6
2004	994	75,827	28,311	13	36.3
2005	1,008	76,173	28,140	12	36.6
2006	1,004	76,446	27,987	13	36.6
2007	1,006	77,157	28,114	13	36.6
2008	999	76,096	27,691	12	36.6
2009	982	74,698	27,220	13	35.7
2010	962	74,301	27,117	13	34.8
2011	970	73,598	26,944	13	35.0
2012	975	73,944	26,909	13	35.4
2013	976	73,816	26,759	13	35.6
2014	975	74,055	26,655	13	35.8
2015	966	74,526	26,704	13	35.7

ESTABLISHMENTS: 1-19 EMPLOYEES



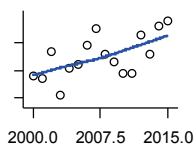
U.S. Census Bureau, County Business Patterns

Year	County	State of Kansas	Non Metro Kansas	County Rank	Per 1000 or \$ Per Capita
2000	927	64,527	25,688	12	32.9
2001	914	64,176	25,552	12	32.9
2002	900	64,886	25,440	13	32.5
2003	886	64,714	25,250	12	32.1
2004	888	65,554	25,241	12	32.4
2005	902	65,796	25,098	12	32.8
2006	891	65,764	24,867	12	32.4
2007	885	66,446	25,020	12	32.2
2008	886	65,322	24,574	12	32.4
2009	876	64,128	24,173	12	31.8
2010	861	64,015	24,175	13	31.1
2011	868	63,251	23,905	13	31.4
2012	857	63,519	23,884	13	31.1
2013	865	63,197	23,698	12	31.5
2014	853	63,113	23,533	13	31.3
2015	843	63,280	23,516	13	31.1

County: county value. Kansas: state value. County Rank: highest county value ranked #1. (\$000): thousands of dollars. Nonmetro Kansas: Kansas total less Metropolitan Areas as defined by the Office of Management and Budget (OMB; released 2/28/2013). Per 1000: For nonmoney amounts, Per 1000=(county value / county population for the same year as the data) x 1000. \$ Per capita=(county value / county population for the same year as the data). Value= . indicates missing or suppressed data or value not calculated.

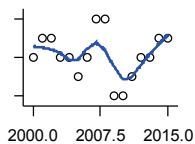
Business

**ESTABLISHMENTS: 20-99
EMPLOYEES**



U.S. Census Bureau, County Business Patterns

Year	County	State of Kansas	Non Metro Kansas	County Rank	Per 1000 or \$ Per Capita
2000	88	8,714	2,704	19	3.1
2001	87	8,692	2,642	19	3.1
2002	97	8,582	2,597	15	3.5
2003	81	8,642	2,616	19	2.9
2004	91	8,658	2,641	17	3.3
2005	92	8,685	2,600	17	3.3
2006	99	8,922	2,664	16	3.6
2007	105	8,938	2,624	11	3.8
2008	96	8,939	2,637	17	3.5
2009	93	8,848	2,602	16	3.4
2010	89	8,612	2,508	18	3.2
2011	89	8,668	2,588	17	3.2
2012	103	8,700	2,561	14	3.7
2013	96	8,870	2,598	15	3.5
2014	106	9,121	2,641	14	3.9
2015	108	9,374	2,716	14	4.0



**ESTABLISHMENTS: 100-499
EMPLOYEES**

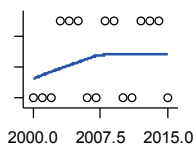
U.S. Census Bureau, County Business Patterns

Year	County	State of Kansas	Non Metro Kansas	County Rank	Per 1000 or \$ Per Capita
2000	14	1,555	419	18	0.5
2001	15	1,555	416	16	0.5
2002	15	1,464	388	15	0.5
2003	14	1,470	381	17	0.5
2004	14	1,463	393	17	0.5
2005	13	1,537	404	19	0.5
2006	14	1,598	411	19	0.5
2007	16	1,602	424	14	0.6
2008	16	1,653	429	13	0.6
2009	12	1,551	401	21	0.4
2010	12	1,513	387	19	0.4
2011	13	1,523	401	19	0.5
2012	14	1,567	413	17	0.5
2013	14	1,581	412	19	0.5
2014	15	1,641	427	16	0.6
2015	15	1,693	420	17	0.6

County: county value. Kansas: state value. County Rank: highest county value ranked #1. (\$000): thousands of dollars. Nonmetro Kansas: Kansas total less Metropolitan Areas as defined by the Office of Management and Budget (OMB; released 2/28/2013). Per 1000: For nonmoney amounts, Per 1000=(county value / county population for the same year as the data) x 1000. \$ Per capita=(county value / county population for the same year as the data). Value= . indicates missing or suppressed data or value not calculated.

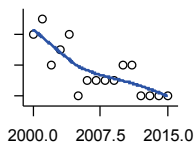
Business

ESTABLISHMENTS: 500 OR MORE EMPLOYEES



U.S. Census Bureau, County Business Patterns

Year	County	State of Kansas	Non Metro Kansas	County Rank	Per 1000 or \$ Per Capita
2000	0	143	33	105	0.0
2001	0	142	36	105	0.0
2002	0	145	35	105	0.0
2003	1	146	32	29	0.0
2004	1	152	36	29	0.0
2005	1	155	38	31	0.0
2006	0	162	45	105	0.0
2007	0	171	46	105	0.0
2008	1	182	51	33	0.0
2009	1	171	44	33	0.0
2010	0	161	47	105	0.0
2011	0	156	50	105	0.0
2012	1	158	51	34	0.0
2013	1	168	51	33	0.0
2014	1	180	54	34	0.0
2015	0	179	52	105	0.0



ESTABLISHMENTS: FORESTRY, FISHING, HUNTING, AND AG SUPPORT

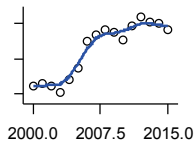
U.S. Census Bureau, County Business Patterns

Year	County	State of Kansas	Non Metro Kansas	County Rank	Per 1000 or \$ Per Capita
2000	8	190	148	3	0.3
2001	9	217	168	4	0.3
2002	6	224	174	6	0.2
2003	7	217	172	6	0.3
2004	8	211	163	5	0.3
2005	4	188	146	13	0.1
2006	5	193	155	12	0.2
2007	5	212	167	12	0.2
2008	5	197	155	9	0.2
2009	5	191	152	8	0.2
2010	6	192	158	6	0.2
2011	6	193	155	6	0.2
2012	4	204	161	18	0.1
2013	4	208	163	16	0.1
2014	4	194	150	14	0.1
2015	4	192	148	14	0.1

County: county value. Kansas: state value. County Rank: highest county value ranked #1. (\$000): thousands of dollars. Nonmetro Kansas: Kansas total less Metropolitan Areas as defined by the Office of Management and Budget (OMB; released 2/28/2013). Per 1000: For nonmoney amounts, Per 1000=(county value / county population for the same year as the data) x 1000. \$ Per capita=(county value / county population for the same year as the data). Value= . indicates missing or suppressed data or value not calculated.

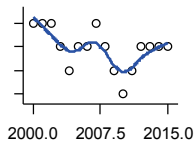
Business

ESTABLISHMENTS: MINING



U.S. Census Bureau, County Business Patterns

Year	County	State of Kansas	Non Metro Kansas	County Rank	Per 1000 or \$ Per Capita
2000	55	868	609	2	2.0
2001	56	878	613	2	2.0
2002	55	847	606	2	2.0
2003	51	864	627	2	1.8
2004	58	880	638	2	2.1
2005	65	941	687	2	2.4
2006	80	991	723	2	2.9
2007	84	1,000	746	2	3.1
2008	87	1,047	785	2	3.2
2009	85	1,016	759	2	3.1
2010	81	1,009	750	2	2.9
2011	89	1,013	748	2	3.2
2012	94	1,048	772	2	3.4
2013	91	1,060	784	2	3.3
2014	90	1,102	808	2	3.3
2015	87	1,069	791	2	3.2



ESTABLISHMENTS: UTILITIES

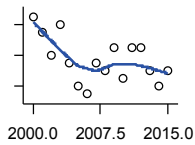
U.S. Census Bureau, County Business Patterns

Year	County	State of Kansas	Non Metro Kansas	County Rank	Per 1000 or \$ Per Capita
2000	7	274	195	4	0.2
2001	7	290	207	8	0.3
2002	7	278	199	8	0.3
2003	6	268	184	9	0.2
2004	5	247	168	13	0.2
2005	6	254	175	9	0.2
2006	6	248	172	9	0.2
2007	7	222	160	5	0.3
2008	6	244	169	7	0.2
2009	5	222	155	10	0.2
2010	4	197	130	12	0.1
2011	5	230	158	11	0.2
2012	6	232	158	6	0.2
2013	6	234	161	6	0.2
2014	6	232	162	6	0.2
2015	6	237	167	7	0.2

County: county value. Kansas: state value. County Rank: highest county value ranked #1. (\$000): thousands of dollars. Nonmetro Kansas: Kansas total less Metropolitan Areas as defined by the Office of Management and Budget (OMB; released 2/28/2013). Per 1000: For nonmoney amounts, Per 1000=(county value / county population for the same year as the data) x 1000. \$ Per capita=(county value / county population for the same year as the data). Value= . indicates missing or suppressed data or value not calculated.

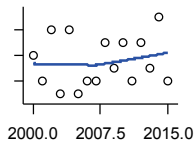
Business

ESTABLISHMENTS: CONSTRUCTION



U.S. Census Bureau, County Business Patterns

Year	County	State of Kansas	Non Metro Kansas	County Rank	Per 1000 or \$ Per Capita
2000	97	7,703	2,643	15	3.4
2001	95	7,449	2,548	14	3.4
2002	92	7,519	2,486	15	3.3
2003	96	7,722	2,535	15	3.5
2004	91	7,887	2,531	16	3.3
2005	88	8,032	2,534	19	3.2
2006	87	8,031	2,519	17	3.2
2007	91	8,057	2,578	16	3.3
2008	90	7,831	2,553	16	3.3
2009	93	7,342	2,480	15	3.4
2010	89	7,064	2,417	15	3.2
2011	93	6,774	2,377	15	3.4
2012	93	6,741	2,403	15	3.4
2013	90	6,802	2,403	15	3.3
2014	88	6,920	2,394	16	3.2
2015	90	7,014	2,382	16	3.3



ESTABLISHMENTS: MANUFACTURING

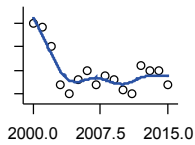
U.S. Census Bureau, County Business Patterns

Year	County	State of Kansas	Non Metro Kansas	County Rank	Per 1000 or \$ Per Capita
2000	46	3,229	1,314	14	1.6
2001	44	3,240	1,322	15	1.6
2002	48	3,181	1,290	14	1.7
2003	43	3,159	1,291	15	1.6
2004	48	3,179	1,313	14	1.8
2005	43	3,128	1,276	15	1.6
2006	44	3,165	1,288	15	1.6
2007	44	3,184	1,316	14	1.6
2008	47	3,171	1,294	13	1.7
2009	45	3,026	1,240	13	1.6
2010	47	2,955	1,221	12	1.7
2011	44	2,877	1,193	13	1.6
2012	47	2,889	1,195	12	1.7
2013	45	2,836	1,163	13	1.6
2014	49	2,831	1,165	11	1.8
2015	44	2,817	1,159	13	1.6

County: county value. Kansas: state value. County Rank: highest county value ranked #1. (\$000): thousands of dollars. Nonmetro Kansas: Kansas total less Metropolitan Areas as defined by the Office of Management and Budget (OMB; released 2/28/2013). Per 1000: For nonmoney amounts, Per 1000=(county value / county population for the same year as the data) x 1000. \$ Per capita=(county value / county population for the same year as the data). Value= . indicates missing or suppressed data or value not calculated.

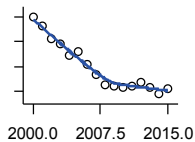
Business

ESTABLISHMENTS: WHOLESALE TRADE



U.S. Census Bureau, County Business Patterns

Year	County	State of Kansas	Non Metro Kansas	County Rank	Per 1000 or \$ Per Capita
2000	80	4,876	1,781	9	2.8
2001	79	4,811	1,775	9	2.8
2002	75	4,719	1,743	9	2.7
2003	67	4,590	1,626	9	2.4
2004	65	4,553	1,627	9	2.4
2005	68	4,541	1,613	9	2.5
2006	70	4,517	1,591	8	2.5
2007	67	4,555	1,619	9	2.4
2008	69	4,501	1,611	9	2.5
2009	68	4,437	1,603	9	2.5
2010	66	4,432	1,598	10	2.4
2011	65	4,400	1,647	10	2.3
2012	71	4,563	1,740	9	2.6
2013	70	4,501	1,726	10	2.6
2014	70	4,497	1,733	9	2.6
2015	67	4,459	1,740	10	2.5



ESTABLISHMENTS: RETAIL TRADE

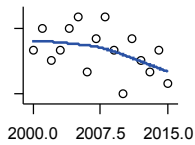
U.S. Census Bureau, County Business Patterns

Year	County	State of Kansas	Non Metro Kansas	County Rank	Per 1000 or \$ Per Capita
2000	180	12,261	5,305	15	6.4
2001	173	12,206	5,273	16	6.2
2002	162	11,980	5,148	16	5.9
2003	158	11,834	5,115	17	5.7
2004	149	11,748	5,036	19	5.4
2005	152	11,562	4,903	18	5.5
2006	142	11,367	4,770	19	5.2
2007	134	11,306	4,718	18	4.9
2008	126	10,978	4,556	20	4.6
2009	125	10,760	4,436	19	4.5
2010	123	10,727	4,410	19	4.4
2011	125	10,655	4,359	17	4.5
2012	128	10,585	4,272	17	4.7
2013	123	10,433	4,212	17	4.5
2014	118	10,391	4,139	19	4.3
2015	122	10,327	4,130	17	4.5

County: county value. Kansas: state value. County Rank: highest county value ranked #1. (\$000): thousands of dollars. Nonmetro Kansas: Kansas total less Metropolitan Areas as defined by the Office of Management and Budget (OMB; released 2/28/2013). Per 1000: For nonmoney amounts, Per 1000=(county value / county population for the same year as the data) x 1000. \$ Per capita=(county value / county population for the same year as the data). Value= . indicates missing or suppressed data or value not calculated.

Business

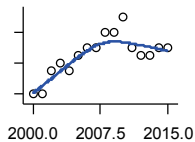
**ESTABLISHMENTS:
TRANSPORTATION &
WAREHOUSING**



U.S. Census Bureau, County Business Patterns

Year	County	State of Kansas	Non Metro Kansas	County Rank	Per 1000 or \$ Per Capita
2000	40	2,474	1,298	14	1.4
2001	42	2,463	1,303	15	1.5
2002	39	2,461	1,290	13	1.4
2003	40	2,576	1,310	16	1.5
2004	42	2,651	1,340	15	1.5
2005	43	2,632	1,345	13	1.6
2006	38	2,626	1,321	17	1.4
2007	41	2,664	1,334	12	1.5
2008	43	2,675	1,353	13	1.6
2009	40	2,635	1,336	12	1.5
2010	36	2,615	1,335	17	1.3
2011	41	2,579	1,308	12	1.5
2012	39	2,519	1,271	12	1.4
2013	38	2,492	1,252	13	1.4
2014	40	2,518	1,261	11	1.5
2015	37	2,554	1,278	15	1.4

ESTABLISHMENTS: INFORMATION



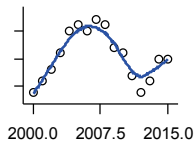
U.S. Census Bureau, County Business Patterns

Year	County	State of Kansas	Non Metro Kansas	County Rank	Per 1000 or \$ Per Capita
2000	10	1,542	587	32	0.4
2001	10	1,556	572	31	0.4
2002	13	1,517	555	22	0.5
2003	14	1,516	566	24	0.5
2004	13	1,518	560	22	0.5
2005	15	1,519	542	19	0.5
2006	16	1,549	563	20	0.6
2007	16	1,504	533	18	0.6
2008	18	1,468	527	14	0.7
2009	18	1,420	515	12	0.7
2010	20	1,437	534	12	0.7
2011	16	1,428	546	18	0.6
2012	15	1,387	522	18	0.5
2013	15	1,337	494	15	0.5
2014	16	1,335	504	13	0.6
2015	16	1,359	519	13	0.6

County: county value. Kansas: state value. County Rank: highest county value ranked #1. (\$000): thousands of dollars. Nonmetro Kansas: Kansas total less Metropolitan Areas as defined by the Office of Management and Budget (OMB; released 2/28/2013). Per 1000: For nonmoney amounts, Per 1000=(county value / county population for the same year as the data) x 1000. \$ Per capita=(county value / county population for the same year as the data). Value= . indicates missing or suppressed data or value not calculated.

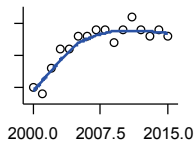
Business

**ESTABLISHMENTS:
FINANCE & INSURANCE**



U.S. Census Bureau, County Business Patterns

Year	County	State of Kansas	Non Metro Kansas	County Rank	Per 1000 or \$ Per Capita
2000	59	5,209	1,871	15	2.1
2001	61	5,178	1,848	13	2.2
2002	63	5,496	1,929	13	2.3
2003	66	5,569	1,926	13	2.4
2004	70	5,572	1,932	11	2.6
2005	71	5,708	1,983	13	2.6
2006	70	5,877	2,000	12	2.5
2007	72	6,017	2,062	13	2.6
2008	71	6,010	2,059	13	2.6
2009	67	5,933	2,026	14	2.4
2010	66	5,872	2,009	14	2.4
2011	62	5,854	2,018	16	2.2
2012	59	5,993	2,056	16	2.1
2013	61	5,903	2,021	15	2.2
2014	65	5,894	2,025	12	2.4
2015	65	5,932	2,022	12	2.4



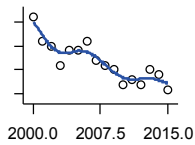
**ESTABLISHMENTS: REAL ESTATE,
RENTAL, AND LEASING**

U.S. Census Bureau, County Business Patterns

Year	County	State of Kansas	Non Metro Kansas	County Rank	Per 1000 or \$ Per Capita
2000	20	2,733	715	24	0.7
2001	19	2,849	748	24	0.7
2002	23	2,952	753	21	0.8
2003	26	3,007	745	19	0.9
2004	26	3,108	730	21	0.9
2005	28	3,203	743	20	1.0
2006	28	3,268	764	21	1.0
2007	29	3,286	754	20	1.1
2008	29	3,239	770	20	1.1
2009	27	3,122	754	20	1.0
2010	29	3,050	737	19	1.0
2011	31	3,002	723	17	1.1
2012	29	2,981	723	17	1.1
2013	28	3,046	752	18	1.0
2014	29	3,135	775	18	1.1
2015	28	3,179	784	18	1.0

County: county value. Kansas: state value. County Rank: highest county value ranked #1. (\$000): thousands of dollars. Nonmetro Kansas: Kansas total less Metropolitan Areas as defined by the Office of Management and Budget (OMB; released 2/28/2013). Per 1000: For nonmoney amounts, Per 1000=(county value / county population for the same year as the data) x 1000. \$ Per capita=(county value / county population for the same year as the data). Value= . indicates missing or suppressed data or value not calculated.

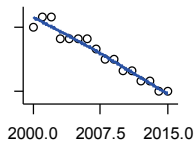
Business



**ESTABLISHMENTS:
PROFESSIONAL, SCIENTIFIC, AND
TECHNICAL SERVICES**

U.S. Census Bureau, County Business
Patterns

Year	County	State of Kansas	Non Metro Kansas	County Rank	Per 1000 or \$ Per Capita
2000	71	6,424	1,716	11	2.5
2001	66	6,492	1,694	13	2.4
2002	65	6,719	1,716	13	2.3
2003	61	6,793	1,748	15	2.2
2004	64	7,025	1,742	15	2.3
2005	64	7,087	1,729	14	2.3
2006	66	7,231	1,760	13	2.4
2007	62	7,329	1,761	15	2.3
2008	61	7,133	1,702	15	2.2
2009	60	7,122	1,719	14	2.2
2010	57	7,172	1,719	15	2.1
2011	58	7,115	1,706	15	2.1
2012	57	7,122	1,707	16	2.1
2013	60	7,129	1,727	16	2.2
2014	59	7,206	1,715	16	2.2
2015	56	7,184	1,710	16	2.1



**ESTABLISHMENTS: MANAGEMENT
OF COMPANIES AND ENTERPRISES**

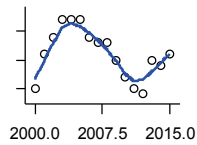
U.S. Census Bureau, County Business
Patterns

Year	County	State of Kansas	Non Metro Kansas	County Rank	Per 1000 or \$ Per Capita
2000	6	622	154	12	0.2
2001	7	593	150	12	0.3
2002	7	597	153	11	0.3
2003	5	561	135	15	0.2
2004	5	569	150	15	0.2
2005	5	543	144	15	0.2
2006	5	542	137	15	0.2
2007	4	550	140	18	0.1
2008	3	553	150	27	0.1
2009	3	575	149	26	0.1
2010	2	567	144	40	0.1
2011	2	552	147	39	0.1
2012	1	593	147	56	0.0
2013	1	590	147	57	0.0
2014	0	603	149	105	0.0
2015	0	613	154	105	0.0

County: county value. Kansas: state value. County Rank: highest county value ranked #1. (\$000): thousands of dollars. Nonmetro Kansas: Kansas total less Metropolitan Areas as defined by the Office of Management and Budget (OMB; released 2/28/2013). Per 1000: For nonmoney amounts, Per 1000=(county value / county population for the same year as the data) x 1000. \$ Per capita=(county value / county population for the same year as the data). Value= . indicates missing or suppressed data or value not calculated.

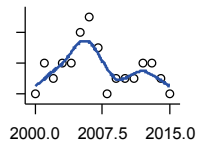
Business

ESTABLISHMENTS: ADMIN, SUPPORT, WASTE MGMT., AND REMEDIATION



U.S. Census Bureau, County Business Patterns

Year	County	State of Kansas	Non Metro Kansas	County Rank	Per 1000 or \$ Per Capita
2000	30	3,307	903	19	1.1
2001	36	3,421	947	16	1.3
2002	39	3,232	902	13	1.4
2003	42	3,189	877	10	1.5
2004	42	3,301	907	11	1.5
2005	42	3,342	911	12	1.5
2006	39	3,395	909	12	1.4
2007	38	3,522	948	14	1.4
2008	38	3,587	966	17	1.4
2009	35	3,505	927	15	1.3
2010	32	3,494	926	20	1.2
2011	30	3,447	933	21	1.1
2012	29	3,462	925	20	1.1
2013	35	3,489	930	16	1.3
2014	34	3,569	964	16	1.2
2015	36	3,630	992	16	1.3



ESTABLISHMENTS: EDUCATIONAL SERVICES

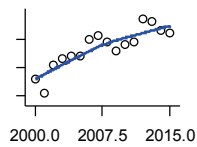
U.S. Census Bureau, County Business Patterns

Year	County	State of Kansas	Non Metro Kansas	County Rank	Per 1000 or \$ Per Capita
2000	4	604	157	25	0.1
2001	6	625	171	18	0.2
2002	5	666	168	21	0.2
2003	6	663	175	20	0.2
2004	6	690	175	20	0.2
2005	8	699	171	15	0.3
2006	9	698	178	14	0.3
2007	7	691	168	16	0.3
2008	4	692	160	28	0.1
2009	5	690	153	22	0.2
2010	5	700	151	20	0.2
2011	5	711	152	21	0.2
2012	6	724	148	19	0.2
2013	6	735	156	19	0.2
2014	5	722	155	21	0.2
2015	4	754	155	25	0.1

County: county value. Kansas: state value. County Rank: highest county value ranked #1. (\$000): thousands of dollars. Nonmetro Kansas: Kansas total less Metropolitan Areas as defined by the Office of Management and Budget (OMB; released 2/28/2013). Per 1000: For nonmoney amounts, Per 1000=(county value / county population for the same year as the data) x 1000. \$ Per capita=(county value / county population for the same year as the data). Value= . indicates missing or suppressed data or value not calculated.

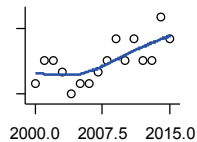
Business

ESTABLISHMENTS: HEALTH CARE AND SOCIAL ASSISTANCE



U.S. Census Bureau, County Business Patterns

Year	County	State of Kansas	Non Metro Kansas	County Rank	Per 1000 or \$ Per Capita
2000	91	6,564	2,619	16	3.2
2001	86	6,636	2,618	16	3.1
2002	96	7,052	2,804	16	3.5
2003	98	7,129	2,817	16	3.6
2004	99	7,239	2,837	16	3.6
2005	99	7,412	2,877	16	3.6
2006	105	7,477	2,880	15	3.8
2007	106	7,661	2,894	15	3.9
2008	104	7,651	2,839	17	3.8
2009	101	7,696	2,814	17	3.7
2010	103	7,751	2,857	17	3.7
2011	104	7,804	2,847	15	3.8
2012	112	7,973	2,824	15	4.1
2013	111	7,877	2,758	15	4.0
2014	108	7,809	2,706	15	4.0
2015	107	8,103	2,714	14	3.9



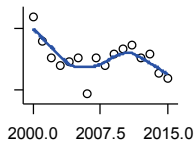
ESTABLISHMENTS: ARTS, ENTERTAINMENT, AND RECREATION

U.S. Census Bureau, County Business Patterns

Year	County	State of Kansas	Non Metro Kansas	County Rank	Per 1000 or \$ Per Capita
2000	11	981	423	18	0.4
2001	13	1,009	437	14	0.5
2002	13	1,054	445	17	0.5
2003	12	1,045	448	19	0.4
2004	10	1,082	449	23	0.4
2005	11	1,109	448	21	0.4
2006	11	1,080	449	21	0.4
2007	12	1,092	448	18	0.4
2008	13	1,062	426	14	0.5
2009	15	1,063	424	13	0.5
2010	13	1,018	411	15	0.5
2011	15	997	395	12	0.5
2012	13	1,000	395	13	0.5
2013	13	1,009	384	14	0.5
2014	17	1,030	371	9	0.6
2015	15	1,031	365	10	0.6

County: county value. Kansas: state value. County Rank: highest county value ranked #1. (\$000): thousands of dollars. Nonmetro Kansas: Kansas total less Metropolitan Areas as defined by the Office of Management and Budget (OMB; released 2/28/2013). Per 1000: For nonmoney amounts, Per 1000=(county value / county population for the same year as the data) x 1000. \$ Per capita=(county value / county population for the same year as the data). Value= . indicates missing or suppressed data or value not calculated.

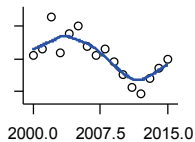
Business



**ESTABLISHMENTS:
ACCOMMODATION AND FOOD
SERVICES**

U.S. Census Bureau, County Business
Patterns

Year	County	State of Kansas	Non Metro Kansas	County Rank	Per 1000 or \$ Per Capita
2000	73	5,536	2,259	15	2.6
2001	67	5,551	2,222	18	2.4
2002	63	5,610	2,229	19	2.3
2003	61	5,635	2,241	20	2.2
2004	62	5,681	2,214	20	2.3
2005	63	5,776	2,224	20	2.3
2006	54	5,745	2,186	23	2.0
2007	63	5,877	2,155	21	2.3
2008	61	5,843	2,114	21	2.2
2009	64	5,794	2,093	19	2.3
2010	65	5,898	2,108	20	2.3
2011	66	5,958	2,131	19	2.4
2012	63	5,951	2,116	19	2.3
2013	64	6,061	2,142	20	2.3
2014	59	5,985	2,099	21	2.2
2015	58	6,034	2,126	21	2.1



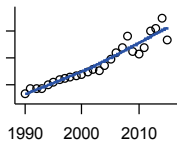
**ESTABLISHMENTS: OTHER
SERVICES**

U.S. Census Bureau, County Business
Patterns

Year	County	State of Kansas	Non Metro Kansas	County Rank	Per 1000 or \$ Per Capita
2000	121	8,423	3,700	15	4.3
2001	123	8,310	3,672	15	4.4
2002	133	8,552	3,706	12	4.8
2003	122	8,411	3,651	14	4.4
2004	128	8,343	3,644	13	4.7
2005	130	8,321	3,616	12	4.7
2006	124	8,225	3,534	13	4.5
2007	121	8,355	3,584	13	4.4
2008	123	8,104	3,450	12	4.5
2009	119	8,040	3,452	14	4.3
2010	115	7,998	3,428	14	4.2
2011	111	7,883	3,342	13	4.0
2012	109	7,913	3,349	14	4.0
2013	114	7,947	3,344	12	4.2
2014	117	7,943	3,330	12	4.3
2015	120	7,869	3,308	12	4.4

County: county value. Kansas: state value. County Rank: highest county value ranked #1. (\$000): thousands of dollars. Nonmetro Kansas: Kansas total less Metropolitan Areas as defined by the Office of Management and Budget (OMB; released 2/28/2013). Per 1000: For nonmoney amounts, Per 1000=(county value / county population for the same year as the data) x 1000. \$ Per capita=(county value / county population for the same year as the data). Value= . indicates missing or suppressed data or value not calculated.

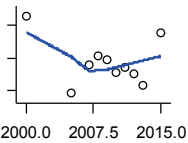
Business



TOTAL ANNUAL PAYROLL (\$000)
COUNTY BUSINESS PATTERNS

U.S. Census Bureau, County Business Patterns

Year	County	State of Kansas	Non Metro Kansas	County Rank	Per 1000 or \$ Per Capita
1990	167,534	17,487,316	4,503,687	18	5,701.9
1991	185,803	18,162,326	4,675,388	16	6,331.9
1992	184,251	19,244,346	4,958,980	18	6,227.6
1993	186,267	20,087,190	5,264,730	19	6,327.9
1994	202,311	21,201,652	5,625,804	18	6,890.0
1995	208,034	22,825,920	5,960,882	18	7,141.1
1996	220,286	24,613,884	6,292,593	18	7,618.4
1997	224,796	26,787,098	6,698,110	19	7,765.0
1998	227,968	28,747,576	6,972,782	20	7,918.3
1999	233,537	30,600,434	7,227,524	20	8,194.0
2000	236,187	31,990,762	7,644,608	21	8,373.9
2001	247,369	33,303,992	7,726,358	20	8,907.5
2002	256,353	33,152,962	7,641,537	20	9,260.0
2003	251,829	34,040,944	7,801,877	20	9,130.5
2004	273,376	35,725,812	8,401,594	20	9,980.9
2005	293,781	36,646,064	8,689,983	19	10,669.0
2006	319,516	39,251,388	9,298,540	19	11,635.7
2007	338,762	42,022,753	.	20	12,322.2
2008	378,280	43,984,689	.	18	13,849.3
2009	322,893	42,146,866	.	20	11,730.5
2010	313,465	42,686,303	10,452,586	21	11,327.1
2011	336,564	43,733,944	.	19	12,160.9
2012	400,123	45,608,072	11,384,354	18	14,542.0
2013	409,333	47,715,601	11,622,361	17	14,925.5
2014	447,293	49,712,832	12,135,725	14	16,407.2
2015	364,276	51,259,676	12,164,775	20	13,445.9



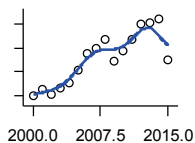
TOTAL ANNUAL PAYROLL(\$000):
FORESTRY, FISHING, HUNTING, AND
AG SUPPORT

U.S. Census Bureau, County Business Patterns

Year	County	State of Kansas	Non Metro Kansas	County Rank	Per 1000 or \$ Per Capita
2000	529	13,551	.	.	18.8
2001
2002	.	16,528	.	.	.
2003	.	17,247	.	.	.
2004	.	17,552	.	.	.
2005	290	16,298	.	.	10.5
2006	.	17,908	.	.	.
2007	378	22,199	.	.	13.7
2008	407	21,359	.	.	14.9
2009	393	22,466	.	.	14.3
2010	356	22,753	.	.	12.9
2011	369	23,320	.	.	13.3
2012	351	27,492	.	.	12.8
2013	315	30,360	.	.	11.5
2014	.	34,862	.	.	.
2015	479	35,980	.	.	17.7

County: county value. Kansas: state value. County Rank: highest county value ranked #1. (\$000): thousands of dollars. Nonmetro Kansas: Kansas total less Metropolitan Areas as defined by the Office of Management and Budget (OMB; released 2/28/2013). Per 1000: For nonmoney amounts, Per 1000=(county value / county population for the same year as the data) x 1000. \$ Per capita=(county value / county population for the same year as the data). Value= . indicates missing or suppressed data or value not calculated.

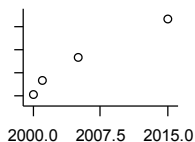
Business



TOTAL ANNUAL PAYROLL(\$000):
MINING

U.S. Census Bureau, County Business Patterns

Year	County	State of Kansas	Non Metro Kansas	County Rank	Per 1000 or \$ Per Capita
2000	10,216	240,079	.	.	362.2
2001	12,898	273,838	.	.	464.4
2002	10,973	262,277	.	.	396.4
2003	13,522	290,652	.	.	490.3
2004	15,636	326,997	.	.	570.9
2005	20,681	381,069	.	.	751.1
2006	27,402	482,102	.	.	997.9
2007	29,666	551,751	.	.	1,079.1
2008	33,686	620,446	.	.	1,233.3
2009	24,746	465,070	.	.	899.0
2010	28,559	485,841	.	.	1,032.0
2011	33,317	541,536	.	.	1,203.8
2012	40,041	600,402	.	.	1,455.2
2013	40,445	599,788	.	.	1,474.7
2014	41,996	678,673	.	.	1,540.5
2015	25,257	552,658	.	.	932.3



TOTAL ANNUAL PAYROLL(\$000):
UTILITIES

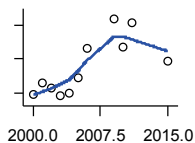
U.S. Census Bureau, County Business Patterns

Year	County	State of Kansas	Non Metro Kansas	County Rank	Per 1000 or \$ Per Capita
2000	6,087	410,313	.	.	215.8
2001	6,706	452,057	.	.	241.5
2002	.	377,559	.	.	.
2003	.	378,157	.	.	.
2004	.	377,809	.	.	.
2005	7,647	429,864	.	.	277.7
2006	.	443,999	.	.	.
2007	.	480,068	.	.	.
2008	.	541,066	.	.	.
2009	.	563,373	.	.	.
2010	.	512,628	.	.	.
2011	.	653,229	.	.	.
2012	.	625,451	.	.	.
2013	.	625,347	.	.	.
2014	.	610,960	.	.	.
2015	9,319	668,559	.	.	344.0

County: county value. Kansas: state value. County Rank: highest county value ranked #1. (\$000): thousands of dollars. Nonmetro Kansas: Kansas total less Metropolitan Areas as defined by the Office of Management and Budget (OMB; released 2/28/2013). Per 1000: For nonmoney amounts, Per 1000=(county value / county population for the same year as the data) x 1000. \$ Per capita=(county value / county population for the same year as the data). Value= . indicates missing or suppressed data or value not calculated.

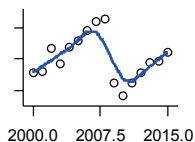
Business

**TOTAL ANNUAL PAYROLL(\$000):
CONSTRUCTION**



U.S. Census Bureau, County Business Patterns

Year	County	State of Kansas	Non Metro Kansas	County Rank	Per 1000 or \$ Per Capita
2000	29,509	2,256,057	.	.	1,046.2
2001	32,977	2,320,652	.	.	1,187.5
2002	31,490	2,302,229	.	.	1,137.5
2003	28,960	2,282,021	.	.	1,050.0
2004	29,865	2,302,854	.	.	1,090.4
2005	34,325	2,465,977	.	.	1,246.5
2006	43,171	2,700,351	.	.	1,572.1
2007	.	2,772,168	.	.	.
2008	.	2,950,073	.	.	.
2009	52,067	2,709,864	.	.	1,891.6
2010	43,457	2,553,555	.	.	1,570.3
2011	51,052	2,550,355	.	.	1,844.6
2012	.	2,733,284	.	.	.
2013	.	2,866,801	.	.	.
2014	.	3,135,814	.	.	.
2015	39,503	3,270,952	.	.	1,458.1



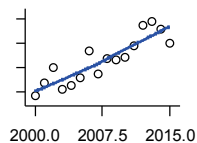
**TOTAL ANNUAL PAYROLL(\$000):
MANUFACTURING**

U.S. Census Bureau, County Business Patterns

Year	County	State of Kansas	Non Metro Kansas	County Rank	Per 1000 or \$ Per Capita
2000	40,813	7,015,414	.	.	1,447.0
2001	41,026	7,301,706	.	.	1,477.3
2002	48,197	6,802,605	.	.	1,741.0
2003	43,389	6,691,611	.	.	1,573.1
2004	48,894	6,985,656	.	.	1,785.1
2005	50,702	7,221,614	.	.	1,841.3
2006	54,089	7,621,873	.	.	1,969.7
2007	56,860	7,873,359	.	.	2,068.2
2008	57,697	8,441,541	.	.	2,112.4
2009	37,390	7,477,838	.	.	1,358.4
2010	33,157	7,556,955	.	.	1,198.1
2011	37,289	7,747,934	.	.	1,347.3
2012	40,483	7,704,851	.	.	1,471.3
2013	43,745	8,365,542	.	.	1,595.1
2014	44,347	8,787,306	.	.	1,626.7
2015	47,144	9,052,105	.	.	1,740.1

County: county value. Kansas: state value. County Rank: highest county value ranked #1. (\$000): thousands of dollars. Nonmetro Kansas: Kansas total less Metropolitan Areas as defined by the Office of Management and Budget (OMB; released 2/28/2013). Per 1000: For nonmoney amounts, Per 1000=(county value / county population for the same year as the data) x 1000. \$ Per capita=(county value / county population for the same year as the data). Value= . indicates missing or suppressed data or value not calculated.

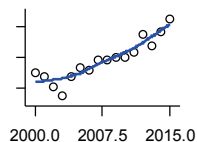
Business



TOTAL ANNUAL PAYROLL(\$000):
WHOLESALE TRADE

U.S. Census Bureau, County Business Patterns

Year	County	State of Kansas	Non Metro Kansas	County Rank	Per 1000 or \$ Per Capita
2000	19,069	2,332,755	.	.	676.1
2001	21,700	2,283,169	.	.	781.4
2002	25,071	2,107,653	.	.	905.6
2003	20,546	2,622,701	.	.	744.9
2004	21,340	2,663,196	.	.	779.1
2005	22,864	2,345,990	.	.	830.3
2006	28,299	2,592,211	.	.	1,030.6
2007	23,698	2,682,542	.	.	862.0
2008	26,763	3,078,655	.	.	979.8
2009	26,565	2,940,949	.	.	965.1
2010	27,069	3,097,628	.	.	978.1
2011	29,489	3,305,811	.	.	1,065.5
2012	33,774	3,339,997	.	.	1,227.5
2013	34,332	3,460,512	.	.	1,251.9
2014	32,788	3,712,075	.	.	1,202.7
2015	30,065	3,760,189	.	.	1,109.7



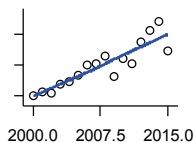
TOTAL ANNUAL PAYROLL(\$000):
RETAIL TRADE

U.S. Census Bureau, County Business Patterns

Year	County	State of Kansas	Non Metro Kansas	County Rank	Per 1000 or \$ Per Capita
2000	32,411	2,747,001	.	.	1,149.1
2001	31,800	2,813,226	.	.	1,145.1
2002	30,199	2,854,231	.	.	1,090.8
2003	28,612	2,773,674	.	.	1,037.4
2004	31,818	2,847,826	.	.	1,161.7
2005	33,262	2,952,196	.	.	1,207.9
2006	32,916	3,126,495	.	.	1,198.7
2007	34,626	3,201,169	.	.	1,259.5
2008	34,582	3,261,054	.	.	1,266.1
2009	35,017	3,232,246	.	.	1,272.1
2010	34,927	3,321,838	.	.	1,262.1
2011	35,828	3,384,607	.	.	1,294.6
2012	38,797	3,409,755	.	.	1,410.0
2013	36,967	3,483,752	.	.	1,347.9
2014	39,104	3,617,933	.	.	1,434.4
2015	41,278	3,712,165	.	.	1,523.6

County: county value. Kansas: state value. County Rank: highest county value ranked #1. (\$000): thousands of dollars. Nonmetro Kansas: Kansas total less Metropolitan Areas as defined by the Office of Management and Budget (OMB; released 2/28/2013). Per 1000: For nonmoney amounts, Per 1000=(county value / county population for the same year as the data) x 1000. \$ Per capita=(county value / county population for the same year as the data). Value= . indicates missing or suppressed data or value not calculated.

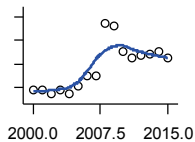
Business



TOTAL ANNUAL PAYROLL(\$000):
TRANSPORTATION &
WAREHOUSING

U.S. Census Bureau, County Business
Patterns

Year	County	State of Kansas	Non Metro Kansas	County Rank	Per 1000 or \$ Per Capita
2000	7,561	1,044,835	.	.	268.1
2001	8,112	1,089,405	.	.	292.1
2002	7,818	1,094,636	.	.	282.4
2003	9,297	1,316,655	.	.	337.1
2004	9,801	1,439,800	.	.	357.8
2005	10,880	1,393,651	.	.	395.1
2006	12,534	1,528,551	.	.	456.4
2007	12,765	1,788,267	.	.	464.3
2008	13,882	1,722,697	.	.	508.2
2009	10,621	1,618,598	.	.	385.9
2010	13,434	1,735,761	.	.	485.4
2011	12,699	1,739,165	.	.	458.8
2012	16,178	1,984,976	.	.	588.0
2013	18,167	2,006,261	.	.	662.4
2014	19,632	2,097,377	.	.	720.1
2015	14,822	2,190,072	.	.	547.1



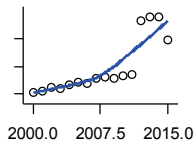
TOTAL ANNUAL PAYROLL(\$000):
INFORMATION

U.S. Census Bureau, County Business
Patterns

Year	County	State of Kansas	Non Metro Kansas	County Rank	Per 1000 or \$ Per Capita
2000	2,918	1,923,381	.	.	103.5
2001	2,918	2,218,610	.	.	105.1
2002	2,716	2,298,108	.	.	98.1
2003	2,908	2,378,673	.	.	105.4
2004	2,710	2,392,990	.	.	98.9
2005	3,084	2,395,081	.	.	112.0
2006	3,519	2,586,483	.	.	128.2
2007	3,479	2,594,138	.	.	126.5
2008	5,742	3,043,244	.	.	210.2
2009	5,598	3,045,570	.	.	203.4
2010	4,506	2,481,580	.	.	162.8
2011	4,272	2,513,805	.	.	154.4
2012	4,338	2,535,555	.	.	157.7
2013	4,436	2,805,017	.	.	161.8
2014	4,503	2,393,609	.	.	165.2
2015	4,265	2,406,323	.	.	157.4

County: county value. Kansas: state value. County Rank: highest county value ranked #1. (\$000): thousands of dollars. Nonmetro Kansas: Kansas total less Metropolitan Areas as defined by the Office of Management and Budget (OMB; released 2/28/2013). Per 1000: For nonmoney amounts, Per 1000=(county value / county population for the same year as the data) x 1000. \$ Per capita=(county value / county population for the same year as the data). Value= . indicates missing or suppressed data or value not calculated.

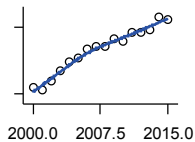
Business



TOTAL ANNUAL PAYROLL(\$000):
FINANCE & INSURANCE

U.S. Census Bureau, County Business Patterns

Year	County	State of Kansas	Non Metro Kansas	County Rank	Per 1000 or \$ Per Capita
2000	10,647	2,083,565	.	.	377.5
2001	10,983	2,129,587	.	.	395.5
2002	12,349	2,414,120	.	.	446.1
2003	11,801	2,608,579	.	.	427.9
2004	13,298	2,676,910	.	.	485.5
2005	14,141	2,786,136	.	.	513.5
2006	13,736	2,928,931	.	.	500.2
2007	15,719	3,096,017	.	.	571.8
2008	16,176	3,322,977	.	.	592.2
2009	15,872	3,206,839	.	.	576.6
2010	16,606	3,211,300	.	.	600.1
2011	16,992	3,404,633	.	.	614.0
2012	36,304	3,611,165	.	.	1,319.4
2013	37,468	3,896,051	.	.	1,366.2
2014	37,680	4,044,315	.	.	1,382.1
2015	29,354	4,113,060	.	.	1,083.5



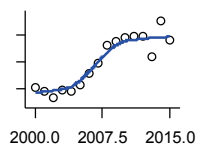
TOTAL ANNUAL PAYROLL(\$000):
REAL ESTATE, RENTAL, AND LEASING

U.S. Census Bureau, County Business Patterns

Year	County	State of Kansas	Non Metro Kansas	County Rank	Per 1000 or \$ Per Capita
2000	1,297	360,637	.	.	46.0
2001	1,186	397,371	.	.	42.7
2002	1,568	403,695	.	.	56.6
2003	2,057	437,786	.	.	74.6
2004	2,437	430,719	.	.	89.0
2005	2,609	465,149	.	.	94.7
2006	3,044	478,811	.	.	110.9
2007	3,160	452,969	.	.	114.9
2008	3,157	484,149	.	.	115.6
2009	3,506	450,884	.	.	127.4
2010	3,351	487,255	.	.	121.1
2011	3,784	535,120	.	.	136.7
2012	3,771	531,039	.	.	137.1
2013	3,911	538,796	.	.	142.6
2014	4,469	542,307	.	.	163.9
2015	4,334	595,030	.	.	160.0

County: county value. Kansas: state value. County Rank: highest county value ranked #1. (\$000): thousands of dollars. Nonmetro Kansas: Kansas total less Metropolitan Areas as defined by the Office of Management and Budget (OMB; released 2/28/2013). Per 1000: For nonmoney amounts, Per 1000=(county value / county population for the same year as the data) x 1000. \$ Per capita=(county value / county population for the same year as the data). Value= . indicates missing or suppressed data or value not calculated.

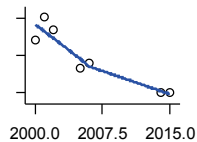
Business



TOTAL ANNUAL PAYROLL(\$000):
PROFESSIONAL, SCIENTIFIC, AND
TECHNICAL SERVICES

U.S. Census Bureau, County Business
Patterns

Year	County	State of Kansas	Non Metro Kansas	County Rank	Per 1000 or \$ Per Capita
2000	10,127	2,057,313	.	.	359.0
2001	9,837	2,152,937	.	.	354.2
2002	9,299	2,150,085	.	.	335.9
2003	9,877	2,052,712	.	.	358.1
2004	9,775	2,531,457	.	.	356.9
2005	10,253	2,418,500	.	.	372.3
2006	11,103	2,655,690	.	.	404.3
2007	11,889	2,901,544	.	.	432.5
2008	13,185	2,903,802	.	.	482.7
2009	13,482	3,071,611	.	.	489.8
2010	13,815	3,037,182	.	.	499.2
2011	13,835	3,132,082	.	.	499.9
2012	13,911	3,455,548	.	.	505.6
2013	12,344	3,777,729	.	.	450.1
2014	15,015	3,981,580	.	.	550.8
2015	13,575	4,039,074	.	.	501.1



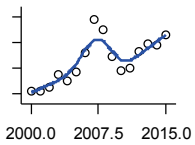
TOTAL ANNUAL PAYROLL(\$000):
MANAGEMENT OF COMPANIES AND
ENTERPRISES

U.S. Census Bureau, County Business
Patterns

Year	County	State of Kansas	Non Metro Kansas	County Rank	Per 1000 or \$ Per Capita
2000	1,422	1,362,735	.	.	50.4
2001	2,053	1,279,253	.	.	73.9
2002	1,713	1,311,368	.	.	61.9
2003	.	1,352,119	.	.	.
2004	.	1,378,891	.	.	.
2005	650	1,510,876	.	.	23.6
2006	792	1,626,320	.	.	28.8
2007	.	2,233,654	.	.	.
2008	.	1,848,656	.	.	.
2009	.	1,601,158	.	.	.
2010	.	2,003,048	.	.	.
2011	.	1,677,619	.	.	.
2012	.	1,834,430	.	.	.
2013	.	1,938,100	.	.	.
2014	0	2,117,232	.	.	0.0
2015	0	2,451,126	.	.	0.0

County: county value. Kansas: state value. County Rank: highest county value ranked #1. (\$000): thousands of dollars. Nonmetro Kansas: Kansas total less Metropolitan Areas as defined by the Office of Management and Budget (OMB; released 2/28/2013). Per 1000: For nonmoney amounts, Per 1000=(county value / county population for the same year as the data) x 1000. \$ Per capita=(county value / county population for the same year as the data). Value= . indicates missing or suppressed data or value not calculated.

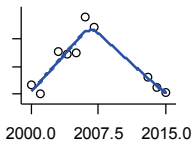
Business



TOTAL ANNUAL PAYROLL(\$000):
ADMIN, SUPPORT, WASTE MGMT.,
AND REMEDIATION

U.S. Census Bureau, County Business
Patterns

Year	County	State of Kansas	Non Metro Kansas	County Rank	Per 1000 or \$ Per Capita
2000	3,267	1,388,712	.	.	115.8
2001	3,251	1,416,480	.	.	117.1
2002	3,525	1,378,905	.	.	127.3
2003	4,537	1,387,061	.	.	164.5
2004	4,067	1,544,442	.	.	148.5
2005	4,755	1,694,687	.	.	172.7
2006	6,218	1,800,846	.	.	226.4
2007	8,757	1,978,025	.	.	318.5
2008	7,966	2,096,864	.	.	291.6
2009	5,896	1,832,540	.	.	214.2
2010	4,826	2,117,325	.	.	174.4
2011	5,033	2,114,970	.	.	181.9
2012	6,328	2,230,250	.	.	230.0
2013	6,946	2,214,320	.	.	253.3
2014	6,760	2,444,170	.	.	248.0
2015	7,623	2,577,592	.	.	281.4



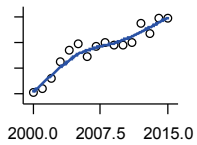
TOTAL ANNUAL PAYROLL(\$000):
EDUCATIONAL SERVICES

U.S. Census Bureau, County Business
Patterns

Year	County	State of Kansas	Non Metro Kansas	County Rank	Per 1000 or \$ Per Capita
2000	665	299,843	.	.	23.6
2001	607	320,606	.	.	21.9
2002	.	353,531	.	.	.
2003	909	350,814	.	.	33.0
2004	893	361,644	.	.	32.6
2005	898	375,781	.	.	32.6
2006	1,160	400,565	.	.	42.2
2007	1,089	414,233	.	.	39.6
2008	.	463,210	.	.	.
2009	.	468,856	.	.	.
2010	.	487,670	.	.	.
2011	.	504,964	.	.	.
2012	.	508,448	.	.	.
2013	721	553,995	.	.	26.3
2014	650	612,073	.	.	23.8
2015	609	579,794	.	.	22.5

County: county value. Kansas: state value. County Rank: highest county value ranked #1. (\$000): thousands of dollars. Nonmetro Kansas: Kansas total less Metropolitan Areas as defined by the Office of Management and Budget (OMB; released 2/28/2013). Per 1000: For nonmoney amounts, Per 1000=(county value / county population for the same year as the data) x 1000. \$ Per capita=(county value / county population for the same year as the data). Value= . indicates missing or suppressed data or value not calculated.

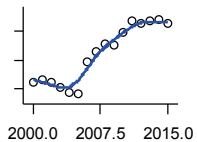
Business



TOTAL ANNUAL PAYROLL(\$000):
HEALTH CARE AND SOCIAL
ASSISTANCE

U.S. Census Bureau, County Business
Patterns

Year	County	State of Kansas	Non Metro Kansas	County Rank	Per 1000 or \$ Per Capita
2000	40,758	4,120,595	.	.	1,445.1
2001	42,381	4,445,027	.	.	1,526.1
2002	46,193	4,705,220	.	.	1,668.6
2003	52,408	4,939,323	.	.	1,900.1
2004	56,891	5,232,394	.	.	2,077.1
2005	59,660	5,487,089	.	.	2,166.6
2006	54,636	5,814,218	.	.	1,989.7
2007	58,530	6,186,471	.	.	2,129.0
2008	60,196	6,490,627	.	.	2,203.9
2009	59,060	6,749,962	.	.	2,145.6
2010	59,023	6,871,727	.	.	2,132.8
2011	59,878	7,129,655	.	.	2,163.5
2012	67,345	7,614,853	.	.	2,447.6
2013	63,658	7,541,515	.	.	2,321.2
2014	69,407	7,733,621	.	.	2,545.9
2015	69,445	7,969,650	.	.	2,563.3



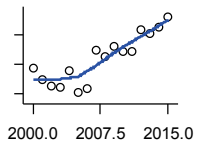
TOTAL ANNUAL PAYROLL(\$000):
ARTS, ENTERTAINMENT, AND
RECREATION

U.S. Census Bureau, County Business
Patterns

Year	County	State of Kansas	Non Metro Kansas	County Rank	Per 1000 or \$ Per Capita
2000	1,111	195,784	.	.	39.4
2001	1,167	203,511	.	.	42.0
2002	1,122	206,204	.	.	40.5
2003	1,020	185,049	.	.	37.0
2004	942	190,742	.	.	34.4
2005	912	196,594	.	.	33.1
2006	1,470	201,049	.	.	53.5
2007	1,651	220,435	.	.	60.1
2008	1,777	236,986	.	.	65.1
2009	1,766	237,116	.	.	64.2
2010	1,989	233,285	.	.	71.9
2011	2,191	234,351	.	.	79.2
2012	2,140	254,169	.	.	77.8
2013	2,174	278,474	.	.	79.3
2014	2,194	289,103	.	.	80.5
2015	2,138	300,253	.	.	78.9

County: county value. Kansas: state value. County Rank: highest county value ranked #1. (\$000): thousands of dollars. Nonmetro Kansas: Kansas total less Metropolitan Areas as defined by the Office of Management and Budget (OMB; released 2/28/2013). Per 1000: For nonmoney amounts, Per 1000=(county value / county population for the same year as the data) x 1000. \$ Per capita=(county value / county population for the same year as the data). Value= . indicates missing or suppressed data or value not calculated.

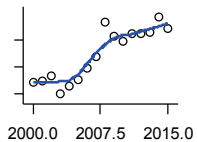
Business



TOTAL ANNUAL PAYROLL(\$000):
ACCOMMODATION AND FOOD
SERVICES

U.S. Census Bureau, County Business
Patterns

Year	County	State of Kansas	Non Metro Kansas	County Rank	Per 1000 or \$ Per Capita
2000	8,725	926,831	.	.	309.3
2001	7,953	960,196	.	.	286.4
2002	7,533	930,510	.	.	272.1
2003	7,479	992,313	.	.	271.2
2004	8,601	1,046,901	.	.	314.0
2005	7,080	1,101,854	.	.	257.1
2006	7,366	1,185,280	.	.	268.2
2007	9,942	1,431,100	.	.	361.6
2008	9,525	1,271,594	.	.	348.7
2009	10,241	1,283,065	.	.	372.0
2010	9,888	1,296,556	.	.	357.3
2011	9,859	1,364,281	.	.	356.2
2012	11,346	1,388,337	.	.	412.4
2013	11,050	1,476,335	.	.	402.9
2014	11,495	1,572,021	.	.	421.6
2015	12,180	1,640,144	.	.	449.6



TOTAL ANNUAL PAYROLL(\$000):
OTHER SERVICES

U.S. Census Bureau, County Business
Patterns

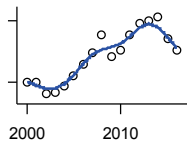
Year	County	State of Kansas	Non Metro Kansas	County Rank	Per 1000 or \$ Per Capita
2000	8,868	965,540	.	.	314.4
2001	8,992	996,716	.	.	323.8
2002	9,376	1,007,464	.	.	338.7
2003	8,020	979,466	.	.	290.8
2004	8,642	970,383	.	.	315.5
2005	9,076	1,005,537	.	.	329.6
2006	9,897	1,055,932	.	.	360.4
2007	10,769	1,141,551	.	.	391.7
2008	13,273	1,184,016	.	.	485.9
2009	12,238	1,167,154	.	.	444.6
2010	11,876	1,170,201	.	.	429.1
2011	12,422	1,173,775	.	.	448.8
2012	12,471	1,217,210	.	.	453.2
2013	12,514	1,254,933	.	.	456.3
2014	13,659	1,305,563	.	.	501.0
2015	12,835	1,341,075	.	.	473.8

County: county value. Kansas: state value. County Rank: highest county value ranked #1. (\$000): thousands of dollars. Nonmetro Kansas: Kansas total less Metropolitan Areas as defined by the Office of Management and Budget (OMB; released 2/28/2013). Per 1000: For nonmoney amounts, Per 1000=(county value / county population for the same year as the data) x 1000. \$ Per capita=(county value / county population for the same year as the data). Value= . indicates missing or suppressed data or value not calculated.

Business

NOMINAL TAXABLE RETAIL SALES
(million\$)

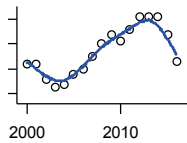
Kansas Department of Revenue



Year	County	State of Kansas	Non Metro Kansas	County Rank	Per 1000 or \$ Per Capita
2000	350.9	30,119.0	9,011.1	15	12.4
2001	350.9	30,202.2	8,874.9	15	12.6
2002	321.5	29,380.8	8,413.5	16	11.6
2003	325.9	30,694.0	8,899.5	17	11.8
2004	341.5	31,922.6	9,275.5	16	12.5
2005	364.4	32,924.2	9,599.7	16	13.2
2006	394.5	34,937.6	10,320.7	15	14.4
2007	420.3	36,180.1	10,848.1	14	15.3
2008	464.8	37,559.5	11,439.6	13	17.0
2009	411.5	35,211.8	10,669.3	14	14.9
2010	428.3	35,655.7	10,946.7	14	15.5
2011	464.1	37,257.0	11,485.4	14	16.8
2012	494.0	38,988.8	12,091.4	14	18.0
2013	498.3	40,009.0	12,338.6	14	18.2
2014	508.4	41,299.0	12,693.3	14	18.6
2015	456.1	41,635.8	12,092.2	15	16.8
2016	426.3	42,040.2	11,851.3	17	15.9

RETAIL PULL FACTOR

Kansas Direct Program, Kansas State University Cooperative Extension Service (1980-1999); Kansas Department of Revenue (2000-)

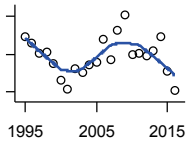


Year	County	State of Kansas	Non Metro Kansas	County Rank	Per 1000 or \$ Per Capita
2000	1.12	.	.	10	.
2001	1.12	.	.	10	.
2002	1.06	.	.	11	.
2003	1.03	.	.	13	.
2004	1.04	.	.	12	.
2005	1.08	.	.	12	.
2006	1.10	.	.	12	.
2007	1.15	.	.	10	.
2008	1.20	.	.	10	.
2009	1.24	.	.	9	.
2010	1.21	.	.	10	.
2011	1.26	.	.	10	.
2012	1.31	.	.	9	.
2013	1.31	.	.	10	.
2014	1.31	.	.	12	.
2015	1.24	.	.	13	.
2016	1.13	.	.	12	.

County: county value. Kansas: state value. County Rank: highest county value ranked #1. (\$000): thousands of dollars. Nonmetro Kansas: Kansas total less Metropolitan Areas as defined by the Office of Management and Budget (OMB; released 2/28/2013). Per 1000: For nonmoney amounts, Per 1000=(county value / county population for the same year as the data) x 1000. \$ Per capita=(county value / county population for the same year as the data). Value= . indicates missing or suppressed data or value not calculated.

Employment

CIVILIAN LABOR FORCE (BLS-Place of Residence; 1990-)



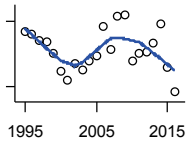
U.S. Department of Labor, Bureau of Labor Statistics (BLS)

Year	County	State of Kansas	Non Metro Kansas	County Rank	Per 1000 or \$ Per Capita
1995	15,453	1,349,748	497,285	20	530.4
1996	15,315	1,358,124	494,903	20	529.7
1997	15,038	1,381,702	494,873	20	519.4
1998	15,048	1,416,392	500,024	20	522.7
1999	14,764	1,425,599	500,839	20	518.0
2000	14,319	1,406,580	490,738	21	507.7
2001	14,090	1,390,620	479,442	21	507.4
2002	14,614	1,413,014	487,067	21	527.9
2003	14,522	1,437,027	495,704	21	526.5
2004	14,727	1,463,707	503,105	21	537.7
2005	14,792	1,465,640	499,193	21	537.2
2006	15,405	1,467,095	505,372	21	561.0
2007	14,869	1,483,458	504,034	21	540.8
2008	15,624	1,499,676	515,717	21	572.0
2009	16,047	1,518,207	527,742	21	583.0
2010	15,001	1,500,764	502,108	21	542.1
2011	15,036	1,491,087	499,558	21	543.3
2012	14,963	1,485,220	496,530	21	543.8
2013	15,107	1,486,910	493,628	21	550.8
2014	15,479	1,493,986	490,473	21	567.8
2015	14,552	1,489,165	483,647	21	537.1
2016	14,037	1,484,001	476,674	22	524.3

County: county value. Kansas: state value. County Rank: highest county value ranked #1. (\$000): thousands of dollars. Nonmetro Kansas: Kansas total less Metropolitan Areas as defined by the Office of Management and Budget (OMB; released 2/28/2013). Per 1000: For nonmoney amounts, Per 1000=(county value / county population for the same year as the data) x 1000. \$ Per capita=(county value / county population for the same year as the data). Value= . indicates missing or suppressed data or value not calculated.

Employment

EMPLOYED (BLS-Place of Residence; 1990-)

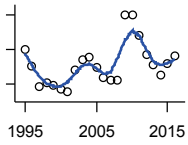


U.S. Department of Labor, Bureau of Labor Statistics (BLS)

Year	County	State of Kansas	Non Metro Kansas	County Rank	Per 1000 or \$ Per Capita
1995	14,755	1,290,159	476,321	20	506.5
1996	14,713	1,300,384	474,096	20	508.8
1997	14,557	1,329,751	476,144	20	502.8
1998	14,540	1,366,403	482,268	20	505.0
1999	14,274	1,378,867	484,569	20	500.8
2000	13,848	1,356,147	473,849	21	491.0
2001	13,640	1,332,034	459,255	21	491.2
2002	14,032	1,341,603	465,642	21	506.9
2003	13,882	1,357,867	472,933	21	503.3
2004	14,073	1,383,867	478,628	21	513.8
2005	14,199	1,392,024	476,544	21	515.7
2006	14,871	1,402,796	485,609	21	541.6
2007	14,351	1,420,449	484,682	21	522.0
2008	15,106	1,430,628	494,557	21	553.0
2009	15,143	1,413,873	496,476	20	550.1
2010	14,100	1,394,958	469,774	21	509.5
2011	14,252	1,394,082	469,427	21	515.0
2012	14,289	1,400,122	469,717	21	519.3
2013	14,493	1,407,987	468,655	21	528.5
2014	14,929	1,426,194	469,555	21	547.6
2015	13,935	1,426,764	463,365	21	514.4
2016	13,373	1,422,122	456,300	22	499.5

County: county value. Kansas: state value. County Rank: highest county value ranked #1. (\$000): thousands of dollars. Nonmetro Kansas: Kansas total less Metropolitan Areas as defined by the Office of Management and Budget (OMB; released 2/28/2013). Per 1000: For nonmoney amounts, Per 1000=(county value / county population for the same year as the data) x 1000. \$ Per capita=(county value / county population for the same year as the data). Value= . indicates missing or suppressed data or value not calculated.

Employment



UNEMPLOYED (BLS-Place of Residence; 1990-)

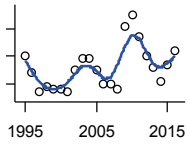
U.S. Department of Labor, Bureau of Labor Statistics (BLS)

Year	County	State of Kansas	Non Metro Kansas	County Rank	Per 1000 or \$ Per Capita
1995	698	59,589	20,964	18	24.0
1996	602	57,740	20,807	21	20.8
1997	481	51,951	18,729	24	16.6
1998	508	49,989	17,756	21	17.6
1999	490	46,732	16,270	20	17.2
2000	471	50,433	16,889	23	16.7
2001	450	58,586	20,187	25	16.2
2002	582	71,411	21,425	23	21.0
2003	640	79,160	22,771	23	23.2
2004	654	79,840	24,477	24	23.9
2005	593	73,616	22,649	25	21.5
2006	534	64,299	19,763	25	19.4
2007	518	63,009	19,352	25	18.8
2008	518	69,048	21,160	26	19.0
2009	904	104,334	31,266	22	32.8
2010	901	105,806	32,334	23	32.6
2011	784	97,005	30,131	24	28.3
2012	674	85,098	26,813	25	24.5
2013	614	78,923	24,973	26	22.4
2014	550	67,792	20,918	22	20.2
2015	617	62,401	20,282	21	22.8
2016	664	61,879	20,374	18	24.8

County: county value. Kansas: state value. County Rank: highest county value ranked #1. (\$000): thousands of dollars. Nonmetro Kansas: Kansas total less Metropolitan Areas as defined by the Office of Management and Budget (OMB; released 2/28/2013). Per 1000: For nonmoney amounts, Per 1000=(county value / county population for the same year as the data) x 1000. \$ Per capita=(county value / county population for the same year as the data). Value= . indicates missing or suppressed data or value not calculated.

Employment

UNEMPLOYMENT RATE (BLS-Place of Residence; 1990-)

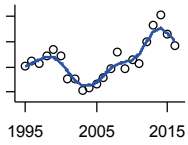


U.S. Department of Labor, Bureau of Labor Statistics (BLS)

Year	County	State of Kansas	Non Metro Kansas	County Rank	Per 1000 or \$ Per Capita
1995	4.5	4.4	4.2	35	.
1996	3.9	4.3	4.2	44	.
1997	3.2	3.8	3.8	55	.
1998	3.4	3.5	3.6	41	.
1999	3.3	3.3	3.2	35	.
2000	3.3	3.6	3.4	46	.
2001	3.2	4.2	4.2	78	.
2002	4.0	5.1	4.4	50	.
2003	4.4	5.5	4.6	45	.
2004	4.4	5.5	4.9	57	.
2005	4.0	5.0	4.5	59	.
2006	3.5	4.4	3.9	61	.
2007	3.5	4.2	3.8	59	.
2008	3.3	4.6	4.1	77	.
2009	5.6	6.9	5.9	47	.
2010	6.0	7.1	6.4	45	.
2011	5.2	6.5	6.0	52	.
2012	4.5	5.7	5.4	58	.
2013	4.1	5.3	5.1	60	.
2014	3.6	4.5	4.3	58	.
2015	4.2	4.2	4.2	41	.
2016	4.7	4.2	4.3	22	.

County: county value. Kansas: state value. County Rank: highest county value ranked #1. (\$000): thousands of dollars. Nonmetro Kansas: Kansas total less Metropolitan Areas as defined by the Office of Management and Budget (OMB; released 2/28/2013). Per 1000: For nonmoney amounts, Per 1000=(county value / county population for the same year as the data) x 1000. \$ Per capita=(county value / county population for the same year as the data). Value= . indicates missing or suppressed data or value not calculated.

Employment



BEA EMPLOYMENT: TOTAL (Place of Work)

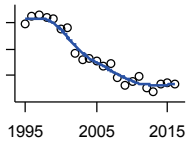
U.S. Bureau of Economic Analysis,
Regional Economic Information System
(REIS)

Year	County	State of Kansas	Non Metro Kansas	County Rank	Per 1000 or \$ Per Capita
1995	19,017	1,600,063	596,945	19	652.8
1996	19,224	1,632,161	603,159	18	664.8
1997	19,161	1,676,805	612,370	20	661.9
1998	19,464	1,723,460	621,685	21	676.1
1999	19,683	1,740,764	623,211	21	690.6
2000	19,433	1,760,325	624,455	21	689.0
2001	18,534	1,767,574	612,521	21	667.4
2002	18,508	1,751,676	606,296	21	668.5
2003	18,061	1,739,382	599,096	21	654.8
2004	18,159	1,752,529	599,904	21	663.0
2005	18,319	1,767,517	598,129	21	665.3
2006	18,594	1,797,453	606,427	21	677.1
2007	18,914	1,847,146	619,228	21	688.0
2008	19,592	1,861,559	623,253	21	717.3
2009	18,943	1,818,445	611,967	21	688.2
2010	19,274	1,802,671	611,765	19	696.5
2011	19,153	1,820,268	615,929	21	692.0
2012	20,005	1,841,656	622,333	19	727.1
2013	20,653	1,869,343	626,287	18	753.1
2014	21,079	1,896,838	630,729	18	773.2
2015	20,334	1,911,712	628,096	20	750.6
2016	19,860	1,918,877	622,547	21	741.7

County: county value. Kansas: state value. County Rank: highest county value ranked #1. (\$000): thousands of dollars. Nonmetro Kansas: Kansas total less Metropolitan Areas as defined by the Office of Management and Budget (OMB; released 2/28/2013). Per 1000: For nonmoney amounts, Per 1000=(county value / county population for the same year as the data) x 1000. \$ Per capita=(county value / county population for the same year as the data). Value= . indicates missing or suppressed data or value not calculated.

Employment

BEA EMPLOYMENT: FARM



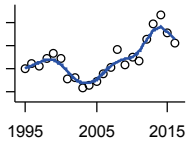
U.S. Bureau of Economic Analysis,
Regional Economic Information System
(REIS)

Year	County	State of Kansas	Non Metro Kansas	County Rank	Per 1000 or \$ Per Capita
1995	997	78,471	59,461	21	34.2
1996	1,024	79,523	60,456	20	35.4
1997	1,031	79,543	60,311	20	35.6
1998	1,022	80,282	60,686	22	35.5
1999	1,017	80,286	60,709	24	35.7
2000	976	77,477	58,434	24	34.6
2001	980	78,133	58,952	26	35.3
2002	886	70,506	53,275	25	32.0
2003	862	68,516	51,521	24	31.3
2004	863	67,587	50,669	24	31.5
2005	854	66,814	49,788	23	31.0
2006	834	64,910	48,148	23	30.4
2007	846	65,718	48,496	23	30.8
2008	791	63,808	47,083	27	29.0
2009	765	62,786	46,372	28	27.8
2010	778	63,882	47,405	27	28.1
2011	799	65,761	49,124	25	28.9
2012	754	63,694	47,555	28	27.4
2013	737	62,750	46,714	28	26.9
2014	768	64,656	48,433	26	28.2
2015	772	64,987	48,841	26	28.5
2016	770	64,698	48,689	26	28.8

County: county value. Kansas: state value. County Rank: highest county value ranked #1. (\$000): thousands of dollars. Nonmetro Kansas: Kansas total less Metropolitan Areas as defined by the Office of Management and Budget (OMB; released 2/28/2013). Per 1000: For nonmoney amounts, Per 1000=(county value / county population for the same year as the data) x 1000. \$ Per capita=(county value / county population for the same year as the data). Value= . indicates missing or suppressed data or value not calculated.

Employment

BEA EMPLOYMENT: NON-FARM



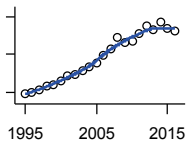
U.S. Bureau of Economic Analysis,
Regional Economic Information System
(REIS)

Year	County	State of Kansas	Non Metro Kansas	County Rank	Per 1000 or \$ Per Capita
1995	18,020	1,521,592	537,484	19	618.6
1996	18,200	1,552,638	542,703	18	629.4
1997	18,130	1,597,262	552,059	21	626.3
1998	18,442	1,643,178	560,999	21	640.6
1999	18,666	1,660,478	562,502	21	654.9
2000	18,457	1,682,848	566,021	21	654.4
2001	17,554	1,689,441	553,569	21	632.1
2002	17,622	1,681,170	553,021	21	636.5
2003	17,199	1,670,866	547,575	21	623.6
2004	17,296	1,684,942	549,235	21	631.5
2005	17,465	1,700,703	548,341	21	634.3
2006	17,760	1,732,543	558,279	21	646.8
2007	18,068	1,781,428	570,732	21	657.2
2008	18,801	1,797,751	576,170	21	688.3
2009	18,178	1,755,659	565,595	21	660.4
2010	18,496	1,738,789	564,360	19	668.4
2011	18,354	1,754,507	566,805	21	663.2
2012	19,251	1,777,962	574,778	19	699.7
2013	19,916	1,806,593	579,573	18	726.2
2014	20,311	1,832,182	582,296	18	745.0
2015	19,562	1,846,725	579,255	20	722.1
2016	19,090	1,854,179	573,858	21	713.0

County: county value. Kansas: state value. County Rank: highest county value ranked #1. (\$000): thousands of dollars. Nonmetro Kansas: Kansas total less Metropolitan Areas as defined by the Office of Management and Budget (OMB; released 2/28/2013). Per 1000: For nonmoney amounts, Per 1000=(county value / county population for the same year as the data) x 1000. \$ Per capita=(county value / county population for the same year as the data). Value= . indicates missing or suppressed data or value not calculated.

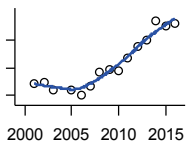
Employment

AVERAGE WAGE PER JOB (\$)



U.S. Bureau of Economic Analysis,
Regional Economic Information System
(REIS)

Year	County	State of Kansas	Non Metro Kansas	County Rank	Per 1000 or \$ Per Capita
1995	19,588	23,681	19,596	30	.
1996	19,997	24,534	20,021	29	.
1997	20,588	25,617	20,724	34	.
1998	21,431	26,810	21,483	33	.
1999	21,793	27,977	22,126	31	.
2000	23,067	29,375	23,209	31	.
2001	24,268	30,265	24,051	27	.
2002	24,558	31,007	24,611	31	.
2003	25,513	31,846	25,516	28	.
2004	26,603	33,222	26,489	31	.
2005	27,882	34,395	27,430	26	.
2006	29,682	36,289	28,909	21	.
2007	31,391	37,739	30,612	23	.
2008	34,593	38,978	32,084	15	.
2009	33,149	38,933	32,194	18	.
2010	33,643	39,824	33,052	19	.
2011	35,617	40,981	33,968	12	.
2012	37,491	42,272	34,987	14	.
2013	36,725	42,725	35,640	20	.
2014	38,771	43,779	36,584	12	.
2015	36,778	44,986	37,109	30	.
2016	36,271	45,343	37,593	52	.



BEA EMPLOYMENT: FORESTRY, FISHING, HUNTING, AND AG SUPPORT

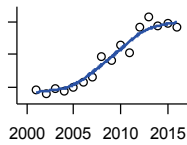
U.S. Bureau of Economic Analysis,
Regional Economic Information System
(REIS)

Year	County	State of Kansas	Non Metro Kansas	County Rank	Per 1000 or \$ Per Capita
2001	121	7,059	.	7	.
2002	125	7,982	.	7	.
2003	109	7,260	.	7	.
2004	.	7,572	.	.	.
2005	109	7,904	.	9	.
2006	101	7,706	.	11	.
2007	117	8,200	.	10	.
2008	142	8,623	.	8	.
2009	147	9,051	.	7	.
2010	144	9,269	.	9	.
2011	169	9,431	.	4	.
2012	189	9,697	.	4	.
2013	201	10,027	.	3	.
2014	235	10,725	.	5	.
2015	227	10,020	.	4	.
2016	231	9,840	.	5	.

County: county value. Kansas: state value. County Rank: highest county value ranked #1. (\$000): thousands of dollars. Nonmetro Kansas: Kansas total less Metropolitan Areas as defined by the Office of Management and Budget (OMB; released 2/28/2013). Per 1000: For nonmoney amounts, Per 1000=(county value / county population for the same year as the data) x 1000. \$ Per capita=(county value / county population for the same year as the data). Value= . indicates missing or suppressed data or value not calculated.

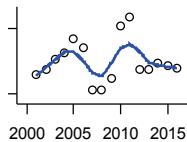
Employment

BEA EMPLOYMENT: MINING



U.S. Bureau of Economic Analysis,
Regional Economic Information System
(REIS)

Year	County	State of Kansas	Non Metro Kansas	County Rank	Per 1000 or \$ Per Capita
2001	1,425	19,592	.	2	.
2002	1,279	17,638	.	2	.
2003	1,467	19,874	.	2	.
2004	1,358	18,472	.	2	.
2005	1,482	19,497	.	2	.
2006	1,652	22,413	.	2	.
2007	1,817	24,053	.	1	.
2008	2,415	31,462	.	2	.
2009	2,300	29,958	.	3	.
2010	2,798	36,118	.	3	.
2011	2,547	31,668	.	1	.
2012	3,339	42,414	.	2	.
2013	3,644	46,573	.	3	.
2014	3,378	45,529	.	3	.
2015	3,441	46,457	.	3	.
2016	3,337	44,935	.	3	.



BEA EMPLOYMENT: UTILITIES

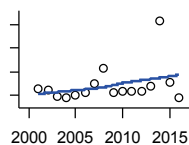
U.S. Bureau of Economic Analysis,
Regional Economic Information System
(REIS)

Year	County	State of Kansas	Non Metro Kansas	County Rank	Per 1000 or \$ Per Capita
2001	99	7,608	.	5	.
2002	101	7,084	.	5	.
2003	106	7,250	.	4	.
2004	109	7,356	.	4	.
2005	115	7,441	.	4	.
2006	111	7,471	.	5	.
2007	92	7,575	.	6	.
2008	92	7,847	.	7	.
2009	97	7,930	.	7	.
2010	121	8,022	.	7	.
2011	125	8,208	.	6	.
2012	101	8,150	.	5	.
2013	101	7,946	.	5	.
2014	104	7,986	.	6	.
2015	103	7,041	.	7	.
2016	102	7,028	.	6	.

County: county value. Kansas: state value. County Rank: highest county value ranked #1. (\$000): thousands of dollars. Nonmetro Kansas: Kansas total less Metropolitan Areas as defined by the Office of Management and Budget (OMB; released 2/28/2013). Per 1000: For nonmoney amounts, Per 1000=(county value / county population for the same year as the data) x 1000. \$ Per capita=(county value / county population for the same year as the data). Value= . indicates missing or suppressed data or value not calculated.

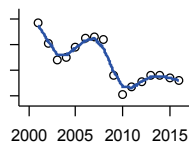
Employment

**BEA EMPLOYMENT:
CONSTRUCTION**



U.S. Bureau of Economic Analysis,
Regional Economic Information System
(REIS)

Year	County	State of Kansas	Non Metro Kansas	County Rank	Per 1000 or \$ Per Capita
2001	1,053	92,647	28,158	14	.
2002	1,044	90,463	.	13	.
2003	984	91,911	27,035	16	.
2004	978	93,545	.	18	.
2005	1,001	95,170	.	16	.
2006	1,023	97,848	.	17	.
2007	1,098	99,656	29,878	17	.
2008	1,230	98,456	.	15	.
2009	1,022	91,194	29,019	18	.
2010	1,032	84,939	27,295	17	.
2011	1,026	83,624	26,714	17	.
2012	1,034	86,076	.	17	.
2013	1,073	88,234	.	16	.
2014	1,635	91,341	.	12	.
2015	1,109	91,613	27,712	14	.
2016	972	91,561	26,647	19	.



**BEA EMPLOYMENT:
MANUFACTURING**

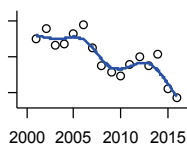
U.S. Bureau of Economic Analysis,
Regional Economic Information System
(REIS)

Year	County	State of Kansas	Non Metro Kansas	County Rank	Per 1000 or \$ Per Capita
2001	1,571	199,966	73,589	22	.
2002	1,411	188,911	70,994	25	.
2003	1,283	179,003	68,650	27	.
2004	1,304	181,763	70,003	27	.
2005	1,376	185,478	71,394	25	.
2006	1,450	188,080	71,917	25	.
2007	1,457	192,983	73,656	25	.
2008	1,438	193,137	72,262	25	.
2009	1,163	173,914	65,318	26	.
2010	1,012	166,029	63,306	30	.
2011	1,073	167,322	64,795	27	.
2012	1,111	169,327	66,061	29	.
2013	1,161	170,113	67,364	28	.
2014	1,165	169,310	68,230	28	.
2015	1,141	168,315	67,039	29	.
2016	1,123	167,371	66,109	29	.

County: county value. Kansas: state value. County Rank: highest county value ranked #1. (\$000): thousands of dollars. Nonmetro Kansas: Kansas total less Metropolitan Areas as defined by the Office of Management and Budget (OMB; released 2/28/2013). Per 1000: For nonmoney amounts, Per 1000=(county value / county population for the same year as the data) x 1000. \$ Per capita=(county value / county population for the same year as the data). Value= . indicates missing or suppressed data or value not calculated.

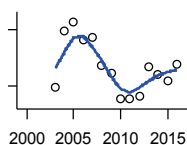
Employment

BEA EMPLOYMENT: WHOLESALE TRADE



U.S. Bureau of Economic Analysis, Regional Economic Information System (REIS)

Year	County	State of Kansas	Non Metro Kansas	County Rank	Per 1000 or \$ Per Capita
2001	750	65,665	.	11	.
2002	777	65,419	.	9	.
2003	733	63,536	.	8	.
2004	735	64,489	.	8	.
2005	764	64,651	.	5	.
2006	789	64,827	.	5	.
2007	725	66,107	.	10	.
2008	675	67,831	.	11	.
2009	659	66,163	.	12	.
2010	647	64,418	.	11	.
2011	679	64,772	.	11	.
2012	700	64,000	.	9	.
2013	676	65,016	.	8	.
2014	708	69,328	.	9	.
2015	612	68,452	.	10	.
2016	586	69,082	.	12	.



BEA EMPLOYMENT: RETAIL TRADE

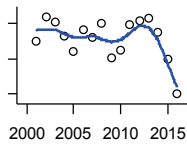
U.S. Bureau of Economic Analysis, Regional Economic Information System (REIS)

Year	County	State of Kansas	Non Metro Kansas	County Rank	Per 1000 or \$ Per Capita
2001	.	198,069	.	.	.
2002	.	196,169	.	.	.
2003	2,148	194,672	65,622	18	.
2004	2,294	193,190	64,754	16	.
2005	2,319	191,941	64,083	15	.
2006	2,272	190,767	63,853	16	.
2007	2,279	191,129	63,474	16	.
2008	2,204	186,541	61,536	15	.
2009	2,186	182,121	60,582	15	.
2010	2,117	178,031	59,109	15	.
2011	2,117	180,787	59,462	17	.
2012	2,124	180,700	58,678	16	.
2013	2,202	183,368	58,835	15	.
2014	2,182	186,041	59,227	15	.
2015	2,166	188,540	59,854	16	.
2016	2,207	191,169	60,442	15	.

County: county value. Kansas: state value. County Rank: highest county value ranked #1. (\$000): thousands of dollars. Nonmetro Kansas: Kansas total less Metropolitan Areas as defined by the Office of Management and Budget (OMB; released 2/28/2013). Per 1000: For nonmoney amounts, Per 1000=(county value / county population for the same year as the data) x 1000. \$ Per capita=(county value / county population for the same year as the data). Value= . indicates missing or suppressed data or value not calculated.

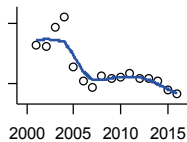
Employment

**BEA EMPLOYMENT:
TRANSPORTATION AND
WAREHOUSING**



U.S. Bureau of Economic Analysis,
Regional Economic Information System
(REIS)

Year	County	State of Kansas	Non Metro Kansas	County Rank	Per 1000 or \$ Per Capita
2001	500	56,302	.	13	.
2002	528	55,349	.	12	.
2003	522	55,529	.	10	.
2004	506	55,503	.	12	.
2005	488	56,240	.	12	.
2006	514	57,443	.	12	.
2007	504	59,190	.	13	.
2008	520	58,604	.	12	.
2009	481	56,214	.	13	.
2010	490	54,798	.	12	.
2011	519	57,079	.	11	.
2012	524	59,284	.	10	.
2013	526	59,532	.	12	.
2014	510	60,328	.	15	.
2015	480	63,029	.	17	.
2016	441	65,449	.	16	.



BEA EMPLOYMENT: INFORMATION

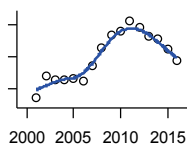
U.S. Bureau of Economic Analysis,
Regional Economic Information System
(REIS)

Year	County	State of Kansas	Non Metro Kansas	County Rank	Per 1000 or \$ Per Capita
2001	159	54,876	.	20	.
2002	157	50,728	.	18	.
2003	176	48,333	6,984	19	.
2004	187	45,614	.	19	.
2005	137	43,840	.	23	.
2006	123	43,929	.	25	.
2007	116	45,120	.	29	.
2008	127	42,987	.	23	.
2009	125	38,693	.	24	.
2010	126	33,429	.	24	.
2011	130	32,165	.	20	.
2012	125	31,829	.	21	.
2013	125	31,737	.	19	.
2014	122	32,314	.	20	.
2015	113	25,282	.	23	.
2016	109	24,905	.	23	.

County: county value. Kansas: state value. County Rank: highest county value ranked #1. (\$000): thousands of dollars. Nonmetro Kansas: Kansas total less Metropolitan Areas as defined by the Office of Management and Budget (OMB; released 2/28/2013). Per 1000: For nonmoney amounts, Per 1000=(county value / county population for the same year as the data) x 1000. \$ Per capita=(county value / county population for the same year as the data). Value= . indicates missing or suppressed data or value not calculated.

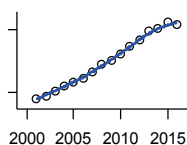
Employment

BEA EMPLOYMENT: FINANCE AND INSURANCE



U.S. Bureau of Economic Analysis,
Regional Economic Information System
(REIS)

Year	County	State of Kansas	Non Metro Kansas	County Rank	Per 1000 or \$ Per Capita
2001	945	76,140	.	12	.
2002	1,082	78,230	.	11	.
2003	1,063	78,470	.	10	.
2004	1,057	78,384	.	10	.
2005	1,067	79,000	.	11	.
2006	1,052	80,955	.	11	.
2007	1,146	86,164	.	11	.
2008	1,260	89,693	.	11	.
2009	1,339	93,675	.	11	.
2010	1,363	92,454	.	11	.
2011	1,426	99,558	.	11	.
2012	1,382	98,687	.	10	.
2013	1,332	100,019	.	11	.
2014	1,311	98,264	.	11	.
2015	1,252	100,543	.	11	.
2016	1,179	99,385	.	11	.



BEA EMPLOYMENT: REAL ESTATE, RENTAL, AND LEASING

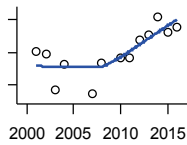
U.S. Bureau of Economic Analysis,
Regional Economic Information System
(REIS)

Year	County	State of Kansas	Non Metro Kansas	County Rank	Per 1000 or \$ Per Capita
2001	269	45,297	.	22	.
2002	282	44,988	.	21	.
2003	306	47,143	.	20	.
2004	331	50,237	.	20	.
2005	351	53,392	.	19	.
2006	364	55,421	.	20	.
2007	396	57,798	.	21	.
2008	433	58,075	.	20	.
2009	454	57,333	.	19	.
2010	483	59,617	.	18	.
2011	523	61,875	.	19	.
2012	550	60,449	.	17	.
2013	594	62,161	.	14	.
2014	608	64,738	.	16	.
2015	639	66,619	.	14	.
2016	626	69,009	.	16	.

County: county value. Kansas: state value. County Rank: highest county value ranked #1. (\$000): thousands of dollars. Nonmetro Kansas: Kansas total less Metropolitan Areas as defined by the Office of Management and Budget (OMB; released 2/28/2013). Per 1000: For nonmoney amounts, Per 1000=(county value / county population for the same year as the data) x 1000. \$ Per capita=(county value / county population for the same year as the data). Value= . indicates missing or suppressed data or value not calculated.

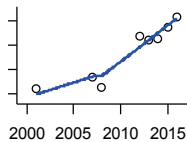
Employment

BEA EMPLOYMENT: PROFESSIONAL AND TECHNICAL SERVICES



U.S. Bureau of Economic Analysis,
Regional Economic Information System
(REIS)

Year	County	State of Kansas	Non Metro Kansas	County Rank	Per 1000 or \$ Per Capita
2001	561	81,396	.	13	.
2002	559	80,725	.	13	.
2003	514	80,376	.	13	.
2004	545	85,697	.	16	.
2005	.	85,164	.	.	.
2006	.	87,579	.	.	.
2007	509	92,935	.	16	.
2008	548	95,660	.	16	.
2009	.	93,647	.	.	.
2010	553	93,122	.	15	.
2011	553	93,374	.	16	.
2012	575	95,412	.	15	.
2013	582	100,834	.	15	.
2014	604	102,277	.	15	.
2015	585	105,661	.	15	.
2016	592	110,201	.	15	.



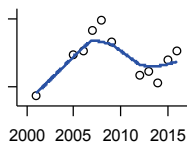
BEA EMPLOYMENT: MANAGEMENT OF COMPANIES AND ENTERPRISES

U.S. Bureau of Economic Analysis,
Regional Economic Information System
(REIS)

Year	County	State of Kansas	Non Metro Kansas	County Rank	Per 1000 or \$ Per Capita
2001	44	13,832	.	16	.
2002	.	12,588	.	.	.
2003	.	11,142	.	.	.
2004	.	10,611	.	.	.
2005	.	11,819	.	.	.
2006	.	13,060	.	.	.
2007	54	13,398	.	14	.
2008	45	15,241	.	19	.
2009	.	14,855	.	.	.
2010	.	16,586	.	.	.
2011	.	15,342	.	.	.
2012	87	15,082	.	13	.
2013	84	16,668	.	14	.
2014	85	20,437	.	13	.
2015	95	29,607	.	13	.
2016	103	26,750	.	12	.

County: county value. Kansas: state value. County Rank: highest county value ranked #1. (\$000): thousands of dollars. Nonmetro Kansas: Kansas total less Metropolitan Areas as defined by the Office of Management and Budget (OMB; released 2/28/2013). Per 1000: For nonmoney amounts, Per 1000=(county value / county population for the same year as the data) x 1000. \$ Per capita=(county value / county population for the same year as the data). Value= . indicates missing or suppressed data or value not calculated.

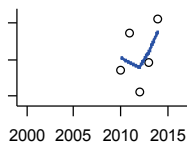
Employment



**BEA EMPLOYMENT:
ADMINISTRATIVE AND WASTE
SERVICES**

U.S. Bureau of Economic Analysis,
Regional Economic Information System
(REIS)

Year	County	State of Kansas	Non Metro Kansas	County Rank	Per 1000 or \$ Per Capita
2001	478	81,573	.	21	.
2002	.	83,017	.	.	.
2003	.	81,346	.	.	.
2004	.	85,787	.	.	.
2005	571	90,038	.	17	.
2006	580	93,810	.	18	.
2007	624	99,022	.	18	.
2008	646	97,654	.	16	.
2009	598	92,750	.	19	.
2010	.	93,730	.	.	.
2011	.	98,057	.	.	.
2012	525	100,511	.	18	.
2013	534	104,729	.	19	.
2014	507	107,265	.	21	.
2015	559	103,484	.	19	.
2016	580	102,252	.	20	.



**BEA EMPLOYMENT: EDUCATIONAL
SERVICES**

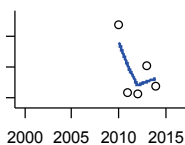
U.S. Bureau of Economic Analysis,
Regional Economic Information System
(REIS)

Year	County	State of Kansas	Non Metro Kansas	County Rank	Per 1000 or \$ Per Capita
2001	.	21,169	.	.	.
2002	.	22,240	.	.	.
2003	.	22,657	.	.	.
2004	.	21,746	.	.	.
2005	.	22,191	.	.	.
2006	.	22,511	.	.	.
2007	.	23,717	.	.	.
2008	.	24,658	.	.	.
2009	.	25,134	.	.	.
2010	101	26,073	.	17	.
2011	106	26,089	.	17	.
2012	98	26,624	.	17	.
2013	102	27,450	.	18	.
2014	108	28,811	.	19	.
2015	.	28,899	.	.	.
2016	.	29,233	.	.	.

County: county value. Kansas: state value. County Rank: highest county value ranked #1. (\$000): thousands of dollars. Nonmetro Kansas: Kansas total less Metropolitan Areas as defined by the Office of Management and Budget (OMB; released 2/28/2013). Per 1000: For nonmoney amounts, Per 1000=(county value / county population for the same year as the data) x 1000. \$ Per capita=(county value / county population for the same year as the data). Value= . indicates missing or suppressed data or value not calculated.

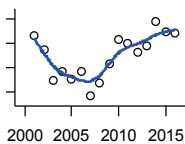
Employment

BEA EMPLOYMENT: HEALTH CARE AND SOCIAL ASSISTANCE



U.S. Bureau of Economic Analysis, Regional Economic Information System (REIS)

Year	County	State of Kansas	Non Metro Kansas	County Rank	Per 1000 or \$ Per Capita
2001	.	165,415	.	.	.
2002	.	168,345	.	.	.
2003	.	169,842	.	.	.
2004	.	172,987	.	.	.
2005	.	174,222	.	.	.
2006	.	177,097	.	.	.
2007	.	182,432	.	.	.
2008	.	186,496	.	.	.
2009	.	189,034	.	.	.
2010	2,368	188,582	.	14	.
2011	2,260	190,957	.	15	.
2012	2,257	193,154	.	15	.
2013	2,303	193,744	.	15	.
2014	2,269	194,924	.	14	.
2015	.	200,001	.	.	.
2016	.	202,627	.	.	.



BEA EMPLOYMENT: ARTS, ENTERTAINMENT, AND RECREATION

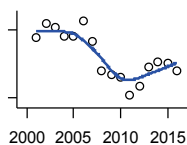
U.S. Bureau of Economic Analysis, Regional Economic Information System (REIS)

Year	County	State of Kansas	Non Metro Kansas	County Rank	Per 1000 or \$ Per Capita
2001	206	25,012	.	17	.
2002	194	25,672	.	20	.
2003	169	24,124	.	21	.
2004	176	25,367	.	20	.
2005	170	26,092	.	20	.
2006	177	26,525	.	19	.
2007	156	27,528	.	24	.
2008	167	27,542	.	23	.
2009	183	27,258	.	20	.
2010	203	27,491	.	18	.
2011	200	28,500	.	20	.
2012	192	30,746	.	21	.
2013	198	31,079	.	20	.
2014	218	32,153	.	18	.
2015	209	31,173	.	19	.
2016	208	31,762	.	20	.

County: county value. Kansas: state value. County Rank: highest county value ranked #1. (\$000): thousands of dollars. Nonmetro Kansas: Kansas total less Metropolitan Areas as defined by the Office of Management and Budget (OMB; released 2/28/2013). Per 1000: For nonmoney amounts, Per 1000=(county value / county population for the same year as the data) x 1000. \$ Per capita=(county value / county population for the same year as the data). Value= . indicates missing or suppressed data or value not calculated.

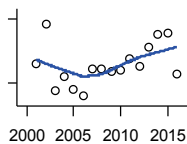
Employment

BEA EMPLOYMENT: GOVERNMENT AND GOVERNMENT ENTERPRISES



U.S. Bureau of Economic Analysis, Regional Economic Information System (REIS)

Year	County	State of Kansas	Non Metro Kansas	County Rank	Per 1000 or \$ Per Capita
2001	2,668	282,293	116,967	20	.
2002	2,729	286,402	118,539	20	.
2003	2,710	287,078	118,640	20	.
2004	2,674	283,826	118,630	20	.
2005	2,673	282,756	117,233	20	.
2006	2,741	288,273	120,371	20	.
2007	2,652	294,369	123,890	20	.
2008	2,520	298,468	125,363	20	.
2009	2,502	300,412	126,045	21	.
2010	2,493	303,741	127,669	21	.
2011	2,416	299,801	126,058	21	.
2012	2,451	297,919	125,633	21	.
2013	2,538	297,588	124,398	20	.
2014	2,558	296,592	123,301	20	.
2015	2,556	295,266	122,084	21	.
2016	2,518	292,109	119,664	21	.



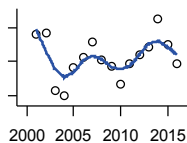
BEA EMPLOYMENT: ACCOMMODATION AND FOOD SERVICES

U.S. Bureau of Economic Analysis, Regional Economic Information System (REIS)

Year	County	State of Kansas	Non Metro Kansas	County Rank	Per 1000 or \$ Per Capita
2001	947	103,353	.	21	.
2002	1,039	103,743	.	20	.
2003	883	105,238	.	21	.
2004	917	106,838	.	21	.
2005	886	107,483	.	21	.
2006	870	110,109	.	22	.
2007	933	111,150	.	21	.
2008	933	111,457	.	21	.
2009	929	109,861	.	21	.
2010	931	108,738	.	21	.
2011	957	110,653	.	21	.
2012	939	112,631	.	21	.
2013	983	114,162	.	21	.
2014	1,013	115,840	.	21	.
2015	1,018	118,569	.	21	.
2016	922	120,111	.	21	.

County: county value. Kansas: state value. County Rank: highest county value ranked #1. (\$000): thousands of dollars. Nonmetro Kansas: Kansas total less Metropolitan Areas as defined by the Office of Management and Budget (OMB; released 2/28/2013). Per 1000: For nonmoney amounts, Per 1000=(county value / county population for the same year as the data) x 1000. \$ Per capita=(county value / county population for the same year as the data). Value= . indicates missing or suppressed data or value not calculated.

Employment

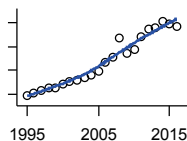


BEA EMPLOYMENT: OTHER SERVICES, EXCEPT PUBLIC ADMINISTRATION

U.S. Bureau of Economic Analysis, Regional Economic Information System (REIS)

Year	County	State of Kansas	Non Metro Kansas	County Rank	Per 1000 or \$ Per Capita
2001	973	92,177	.	20	.
2002	974	95,477	.	20	.
2003	906	96,082	33,030	19	.
2004	899	95,958	.	21	.
2005	933	96,384	33,352	20	.
2006	945	96,719	.	18	.
2007	963	98,902	.	21	.
2008	942	97,319	.	20	.
2009	934	96,462	.	21	.
2010	913	93,602	.	21	.
2011	937	95,245	.	18	.
2012	948	95,270	.	18	.
2013	957	95,613	.	18	.
2014	991	97,979	.	18	.
2015	960	98,154	.	20	.
2016	938	99,400	.	20	.

Income



BEA PER CAPITA PERSONAL INCOME (\$)

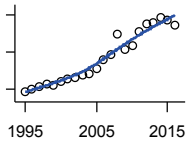
U.S. Bureau of Economic Analysis, Regional Economic Information System (REIS)

Year	County	State of Kansas	Non Metro Kansas	County Rank	Per 1000 or \$ Per Capita
1995	19,514	22,358	19,117	47	.
1996	20,836	23,703	20,477	47	.
1997	21,833	24,986	21,462	52	.
1998	22,620	26,321	22,298	55	.
1999	22,736	27,032	22,686	60	.
2000	24,230	28,404	23,371	50	.
2001	25,682	29,268	24,685	47	.
2002	26,200	29,385	24,459	23	.
2003	27,242	30,147	26,013	41	.
2004	28,071	30,669	26,610	37	.
2005	29,935	32,268	28,123	39	.
2006	33,332	35,353	29,580	14	.
2007	35,517	37,865	32,030	28	.
2008	43,670	41,179	35,372	14	.
2009	37,321	39,204	34,057	33	.
2010	38,778	39,206	35,437	38	.
2011	43,900	42,521	39,255	45	.
2012	47,447	44,811	39,779	28	.
2013	47,799	45,867	42,114	40	.
2014	50,544	46,568	41,334	20	.
2015	49,456	46,994	41,236	21	.
2016	48,338	47,228	41,625	26	.

County: county value. Kansas: state value. County Rank: highest county value ranked #1. (\$000): thousands of dollars. Nonmetro Kansas: Kansas total less Metropolitan Areas as defined by the Office of Management and Budget (OMB; released 2/28/2013). Per 1000: For nonmoney amounts, Per 1000=(county value / county population for the same year as the data) x 1000. \$ Per capita=(county value / county population for the same year as the data). Value= . indicates missing or suppressed data or value not calculated.

Income

**SOURCES OF PERSONAL INCOME:
TOTAL PERSONAL INCOME (\$000)**



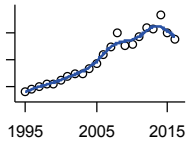
U.S. Bureau of Economic Analysis,
Regional Economic Information System
(REIS)

Year	County	State of Kansas	Non Metro Kansas	County Rank	Per 1000 or \$ Per Capita
1995	568,496	58,154,336	18,755,990	20	19,514.5
1996	602,480	61,972,792	20,054,601	19	20,836.2
1997	632,063	65,844,794	21,019,340	19	21,832.9
1998	651,240	70,029,330	21,856,818	20	22,620.4
1999	647,987	72,401,435	22,237,595	21	22,735.6
2000	682,376	76,512,050	22,865,596	21	24,193.4
2001	713,221	79,087,763	23,989,732	22	25,682.2
2002	725,326	79,737,565	23,607,546	22	26,200.2
2003	751,357	82,089,882	24,984,699	22	27,241.8
2004	768,871	83,860,092	25,447,910	22	28,071.2
2005	824,282	88,583,966	26,764,476	21	29,934.7
2006	915,283	97,677,245	28,053,520	20	33,331.5
2007	976,420	105,406,658	30,351,454	19	35,516.5
2008	1,192,790	115,633,816	33,554,554	16	43,669.5
2009	1,027,306	111,052,352	32,368,154	20	37,321.3
2010	1,073,493	112,083,904	33,934,322	20	38,790.7
2011	1,214,977	122,014,751	37,511,290	18	43,900.0
2012	1,305,492	129,292,297	38,038,692	16	47,446.6
2013	1,310,880	132,683,659	40,111,396	16	47,798.7
2014	1,377,934	135,017,710	39,158,074	14	50,544.1
2015	1,339,857	136,598,008	38,869,160	15	49,455.8
2016	1,294,239	137,305,437	38,895,971	18	48,337.6

County: county value. Kansas: state value. County Rank: highest county value ranked #1. (\$000): thousands of dollars. Nonmetro Kansas: Kansas total less Metropolitan Areas as defined by the Office of Management and Budget (OMB; released 2/28/2013). Per 1000: For nonmoney amounts, Per 1000=(county value / county population for the same year as the data) x 1000. \$ Per capita=(county value / county population for the same year as the data). Value= . indicates missing or suppressed data or value not calculated.

Income

**SOURCES OF PERSONAL INCOME:
WAGES AND SALARIES (\$000)**



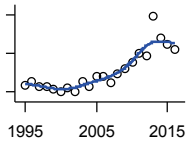
U.S. Bureau of Economic Analysis,
Regional Economic Information System
(REIS)

Year	County	State of Kansas	Non Metro Kansas	County Rank	Per 1000 or \$ Per Capita
1995	278,425	30,336,720	8,739,176	20	9,557.4
1996	292,022	32,161,729	9,060,749	20	10,099.3
1997	298,977	34,582,641	9,518,034	21	10,327.4
1998	310,516	37,317,819	10,010,388	21	10,785.6
1999	309,640	39,438,463	10,325,791	22	10,864.2
2000	321,531	41,766,878	10,813,169	22	11,399.8
2001	338,634	43,269,734	11,092,551	21	12,193.8
2002	347,321	43,922,702	11,320,242	21	12,545.9
2003	348,122	44,528,950	11,569,173	21	12,621.8
2004	368,127	46,698,084	12,058,954	21	13,440.2
2005	387,389	48,529,288	12,382,842	21	14,068.5
2006	418,223	52,067,815	13,249,441	21	15,230.3
2007	448,981	55,404,970	14,279,950	21	16,331.3
2008	498,037	57,582,460	15,015,148	21	18,233.8
2009	453,737	55,603,680	14,645,336	21	16,483.9
2010	456,498	56,102,260	14,954,099	21	16,495.6
2011	486,992	58,121,170	15,500,154	20	17,596.2
2012	516,702	60,590,986	16,046,735	19	18,778.9
2013	515,358	61,872,549	16,287,765	19	18,791.5
2014	566,943	64,442,235	16,883,226	18	20,796.1
2015	501,210	66,672,484	16,973,483	21	18,500.3
2016	474,535	67,216,593	16,919,039	21	17,723.1

County: county value. Kansas: state value. County Rank: highest county value ranked #1. (\$000): thousands of dollars. Nonmetro Kansas: Kansas total less Metropolitan Areas as defined by the Office of Management and Budget (OMB; released 2/28/2013). Per 1000: For nonmoney amounts, Per 1000=(county value / county population for the same year as the data) x 1000. \$ Per capita=(county value / county population for the same year as the data). Value= . indicates missing or suppressed data or value not calculated.

Income

**SOURCES OF PERSONAL INCOME:
PROPRIETORS-FARM (\$000)**

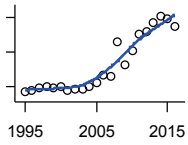


U.S. Bureau of Economic Analysis,
Regional Economic Information System
(REIS)

Year	County	State of Kansas	Non Metro Kansas	County Rank	Per 1000 or \$ Per Capita
1995	6,781	536,051	515,276	36	232.8
1996	10,585	1,230,217	1,045,561	42	366.1
1997	6,006	1,114,719	938,144	72	207.5
1998	5,821	966,637	911,032	63	202.2
1999	3,342	1,085,436	1,045,920	73	117.3
2000	73	668,539	672,583	79	2.6
2001	3,968	779,473	769,825	65	142.9
2002	232	150,137	186,990	59	8.4
2003	10,979	1,309,803	1,197,900	57	398.1
2004	5,585	1,190,232	954,049	72	203.9
2005	15,828	1,575,919	1,418,571	40	574.8
2006	15,865	770,704	636,715	17	577.7
2007	9,756	1,095,000	994,589	57	354.9
2008	19,260	1,756,207	1,504,609	41	705.1
2009	24,751	1,557,257	1,336,669	19	899.2
2010	30,609	2,046,492	1,901,748	21	1,106.1
2011	40,850	3,398,205	3,156,357	33	1,476.0
2012	37,093	2,582,318	2,314,086	23	1,348.1
2013	79,136	5,133,350	4,522,167	18	2,885.5
2014	55,708	2,853,455	2,590,858	12	2,043.4
2015	49,487	2,008,627	1,827,108	12	1,826.6
2016	43,586	2,021,374	1,791,675	15	1,627.9

County: county value. Kansas: state value. County Rank: highest county value ranked #1. (\$000): thousands of dollars. Nonmetro Kansas: Kansas total less Metropolitan Areas as defined by the Office of Management and Budget (OMB; released 2/28/2013). Per 1000: For nonmoney amounts, Per 1000=(county value / county population for the same year as the data) x 1000. \$ Per capita=(county value / county population for the same year as the data). Value= . indicates missing or suppressed data or value not calculated.

Income



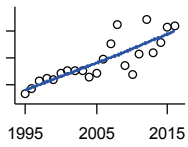
**SOURCES OF PERSONAL INCOME:
PROPRIETORS-NONFARM (\$000)**

U.S. Bureau of Economic Analysis,
Regional Economic Information System
(REIS)

Year	County	State of Kansas	Non Metro Kansas	County Rank	Per 1000 or \$ Per Capita
1995	32,984	4,060,986	1,484,778	20	1,132.2
1996	39,002	4,434,345	1,609,451	20	1,348.9
1997	45,663	4,747,460	1,812,220	18	1,577.3
1998	49,027	4,965,611	1,819,677	18	1,702.9
1999	46,362	4,929,968	1,723,423	17	1,626.7
2000	49,414	5,021,217	1,641,012	16	1,752.0
2001	38,891	5,123,658	1,914,500	26	1,400.4
2002	40,935	5,536,610	2,030,802	26	1,478.7
2003	42,194	5,326,430	1,954,132	25	1,529.8
2004	49,331	3,931,076	2,095,098	19	1,801.1
2005	59,382	4,648,671	2,230,507	18	2,156.5
2006	81,144	7,388,910	2,707,966	15	2,955.0
2007	79,225	7,481,818	2,557,949	16	2,881.7
2008	180,956	10,166,363	3,294,133	8	6,625.0
2009	114,401	9,593,694	3,011,756	14	4,156.1
2010	153,950	9,126,810	3,328,557	11	5,563.0
2011	203,900	11,337,195	3,967,147	8	7,367.4
2012	209,662	14,849,449	4,251,744	9	7,619.9
2013	236,026	15,492,769	4,261,741	7	8,606.2
2014	253,934	14,752,087	4,138,516	6	9,314.6
2015	247,968	13,965,723	4,075,936	7	9,152.8
2016	224,148	13,051,583	3,787,637	7	8,371.5

County: county value. Kansas: state value. County Rank: highest county value ranked #1. (\$000): thousands of dollars. Nonmetro Kansas: Kansas total less Metropolitan Areas as defined by the Office of Management and Budget (OMB; released 2/28/2013). Per 1000: For nonmoney amounts, Per 1000=(county value / county population for the same year as the data) x 1000. \$ Per capita=(county value / county population for the same year as the data). Value= . indicates missing or suppressed data or value not calculated.

Income



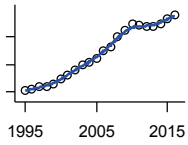
**SOURCES OF PERSONAL INCOME:
DIVIDENDS,INTEREST,RENT(\$000)**

U.S. Bureau of Economic Analysis,
Regional Economic Information System
(REIS)

Year	County	State of Kansas	Non Metro Kansas	County Rank	Per 1000 or \$ Per Capita
1995	132,940	12,283,397	4,111,094	15	4,563.4
1996	142,057	13,056,182	4,300,743	13	4,912.9
1997	157,155	13,955,522	4,528,907	13	5,428.5
1998	162,393	15,069,389	4,765,514	13	5,640.6
1999	158,583	14,755,729	4,558,987	13	5,564.1
2000	171,536	15,825,534	4,815,218	13	6,081.8
2001	175,534	15,592,972	4,859,811	13	6,320.8
2002	176,278	15,091,474	4,496,556	13	6,367.5
2003	177,196	14,990,180	4,423,410	13	6,424.6
2004	164,220	15,336,693	4,279,001	13	5,995.6
2005	170,794	16,242,451	4,353,997	13	6,202.6
2006	198,261	19,271,923	4,814,804	13	7,220.0
2007	225,456	21,446,291	5,420,986	12	8,200.8
2008	259,714	23,552,474	5,900,489	11	9,508.5
2009	186,574	20,352,369	5,224,452	13	6,778.1
2010	168,381	19,100,033	5,255,780	16	6,084.4
2011	207,097	22,175,707	5,850,060	14	7,482.9
2012	269,948	24,519,909	6,517,322	12	9,810.9
2013	208,351	23,786,270	6,090,144	13	7,597.1
2014	228,461	26,148,227	6,432,817	13	8,380.2
2015	255,842	26,174,774	6,609,323	13	9,443.5
2016	259,040	26,299,264	6,718,641	13	9,674.7

County: county value. Kansas: state value. County Rank: highest county value ranked #1. (\$000): thousands of dollars. Nonmetro Kansas: Kansas total less Metropolitan Areas as defined by the Office of Management and Budget (OMB; released 2/28/2013). Per 1000: For nonmoney amounts, Per 1000=(county value / county population for the same year as the data) x 1000. \$ Per capita=(county value / county population for the same year as the data). Value= . indicates missing or suppressed data or value not calculated.

Income



**SOURCES OF PERSONAL INCOME:
TRANSFER PAYMENTS (\$000)**

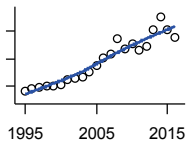
U.S. Bureau of Economic Analysis,
Regional Economic Information System
(REIS)

Year	County	State of Kansas	Non Metro Kansas	County Rank	Per 1000 or \$ Per Capita
1995	102,727	7,752,389	3,350,524	15	3,526.3
1996	105,296	8,014,460	3,444,344	15	3,641.6
1997	110,523	8,409,892	3,603,814	15	3,817.7
1998	109,393	8,544,227	3,671,600	15	3,799.7
1999	114,627	8,902,161	3,812,664	15	4,021.9
2000	123,141	9,650,835	4,082,415	16	4,365.9
2001	131,240	10,549,298	4,407,858	18	4,725.8
2002	140,109	11,203,835	4,609,435	16	5,061.0
2003	148,955	11,709,430	4,765,114	16	5,400.6
2004	154,368	12,040,554	4,869,749	16	5,635.9
2005	161,146	12,682,434	5,127,960	16	5,852.2
2006	175,167	13,635,775	5,528,021	15	6,379.0
2007	182,216	14,667,271	5,852,430	16	6,628.0
2008	200,497	16,557,390	6,429,208	16	7,340.4
2009	212,312	18,019,784	6,905,011	16	7,713.1
2010	223,188	19,173,099	7,223,911	16	8,064.9
2011	222,595	19,630,001	7,403,325	16	8,042.9
2012	218,372	19,373,733	7,295,401	17	7,936.5
2013	218,856	19,660,435	7,339,337	17	7,980.2
2014	224,041	20,341,689	7,531,638	18	8,218.1
2015	234,162	21,266,488	7,815,041	18	8,643.2
2016	240,536	21,920,425	8,046,817	18	8,983.6

County: county value. Kansas: state value. County Rank: highest county value ranked #1. (\$000): thousands of dollars. Nonmetro Kansas: Kansas total less Metropolitan Areas as defined by the Office of Management and Budget (OMB; released 2/28/2013). Per 1000: For nonmoney amounts, Per 1000=(county value / county population for the same year as the data) x 1000. \$ Per capita=(county value / county population for the same year as the data). Value= . indicates missing or suppressed data or value not calculated.

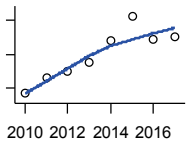
Income

**SOURCES OF PERSONAL INCOME:
LESS SOCIAL INSURANCE (\$000)**



U.S. Bureau of Economic Analysis,
Regional Economic Information System
(REIS)

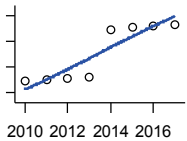
Year	County	State of Kansas	Non Metro Kansas	County Rank	Per 1000 or \$ Per Capita
1995	47,082	5,091,029	1,499,200	20	1,616.2
1996	48,378	5,327,270	1,524,344	20	1,673.1
1997	49,314	5,697,015	1,596,507	21	1,703.4
1998	50,533	6,067,756	1,649,146	21	1,755.2
1999	50,026	6,342,550	1,682,913	21	1,755.2
2000	51,474	6,655,173	1,739,410	22	1,825.0
2001	54,661	6,869,934	1,821,955	21	1,968.3
2002	56,365	7,007,808	1,864,776	21	2,036.0
2003	57,106	7,172,007	1,916,633	21	2,070.5
2004	60,987	7,552,161	2,009,013	21	2,226.6
2005	65,001	7,906,311	2,094,677	21	2,360.6
2006	70,172	8,405,170	2,231,656	21	2,555.4
2007	73,642	8,801,746	2,352,157	21	2,678.7
2008	84,751	9,191,301	2,487,453	21	3,102.8
2009	76,825	8,995,216	2,457,565	21	2,791.0
2010	80,512	9,228,378	2,560,343	21	2,909.3
2011	76,428	8,512,072	2,364,272	20	2,761.5
2012	78,761	8,808,218	2,417,191	20	2,862.5
2013	90,535	10,204,440	2,765,660	20	3,301.2
2014	99,699	10,598,579	2,857,135	18	3,657.1
2015	91,217	11,044,023	2,904,611	20	3,366.9
2016	85,296	10,930,544	2,835,911	21	3,185.7



HUD MEDIAN FAMILY INCOME

U.S. Department of Housing and Urban
Development (HUD)

Year	County	State of Kansas	Non Metro Kansas	County Rank	Per 1000 or \$ Per Capita
2010	51,400	63,100	.	62	.
2011	53,200	64,300	.	59	.
2012	53,900	65,200	.	59	.
2013	55,000	64,800	.	60	.
2014	57,600	64,400	.	53	.
2015	60,500	66,300	.	46	.
2016	57,700	66,700	.	56	.
2017	58,100	68,500	.	67	.



**HUD 30% LOW-TO-MEDIUM INCOME
(LMI) LIMIT - 4 PERSONS**

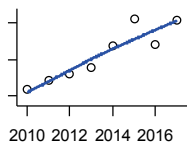
U.S. Department of Housing and Urban
Development (HUD)

Year	County	State of Kansas	Non Metro Kansas	County Rank	Per 1000 or \$ Per Capita
2010	15,850	.	.	105	.
2011	16,100	.	.	105	.
2012	16,300	.	.	105	.
2013	16,550	.	.	105	.
2014	23,850	.	.	105	.
2015	24,250	.	.	105	.
2016	24,300	.	.	105	.
2017	24,600	.	.	105	.

County: county value. Kansas: state value. County Rank: highest county value ranked #1. (\$000): thousands of dollars. Nonmetro Kansas: Kansas total less Metropolitan Areas as defined by the Office of Management and Budget (OMB; released 2/28/2013). Per 1000: For nonmoney amounts, Per 1000=(county value / county population for the same year as the data) x 1000. \$ Per capita=(county value / county population for the same year as the data). Value= . indicates missing or suppressed data or value not calculated.

Income

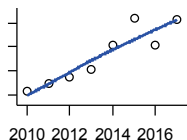
HUD 50% LOW-TO-MEDIUM INCOME (LMI) LIMIT - 4 PERSONS



U.S. Department of Housing and Urban Development (HUD)

Year	County	State of Kansas	Non Metro Kansas	County Rank	Per 1000 or \$ Per Capita
2010	26,400	.	.	105	.
2011	26,850	.	.	105	.
2012	27,200	.	.	105	.
2013	27,600	.	.	105	.
2014	28,800	.	.	54	.
2015	30,250	.	.	44	.
2016	28,850	.	.	60	.
2017	30,150	.	.	105	.

HUD 80% LOW-TO-MEDIUM INCOME (LMI) LIMIT - 4 PERSONS

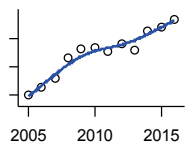


U.S. Department of Housing and Urban Development (HUD)

Year	County	State of Kansas	Non Metro Kansas	County Rank	Per 1000 or \$ Per Capita
2010	42,250	.	.	105	.
2011	42,950	.	.	105	.
2012	43,500	.	.	105	.
2013	44,150	.	.	105	.
2014	46,100	.	.	54	.
2015	48,400	.	.	44	.
2016	46,150	.	.	60	.
2017	48,250	.	.	105	.

Banking

BANK DEPOSITS (1984-2004 in thousands; 2005- in millions)



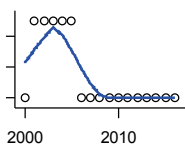
Federal Deposit Insurance Corporation, Data Book, Operating Banks and Branches

Year	County	State of Kansas	Non Metro Kansas	County Rank	Per 1000 or \$ Per Capita
2005	699	48,304	17,143	10	25.4
2006	727	50,668	17,756	10	26.5
2007	758	54,057	18,736	11	27.6
2008	832	57,869	19,826	10	30.5
2009	863	57,763	20,212	10	31.4
2010	869	60,031	20,868	11	31.4
2011	853	61,094	21,546	11	30.8
2012	879	62,910	22,701	11	31.9
2013	859	64,547	23,025	12	31.3
2014	924	66,538	23,559	12	33.9
2015	938	68,160	23,555	11	34.6
2016	966	70,383	23,633	11	36.1

County: county value. Kansas: state value. County Rank: highest county value ranked #1. (\$000): thousands of dollars. Nonmetro Kansas: Kansas total less Metropolitan Areas as defined by the Office of Management and Budget (OMB; released 2/28/2013). Per 1000: For nonmoney amounts, Per 1000=(county value / county population for the same year as the data) x 1000. \$ Per capita=(county value / county population for the same year as the data). Value= . indicates missing or suppressed data or value not calculated.

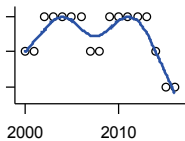
Banking

NUMBER OF BANKS



Federal Deposit Insurance Corporation, Data Book, Operating Banks and Branches

Year	County	State of Kansas	Non Metro Kansas	County Rank	Per 1000 or \$ Per Capita
2000	9	410	146	27	.
2001	10	410	137	22	.
2002	10	404	130	22	.
2003	10	397	123	22	.
2004	10	736	456	22	.
2005	10	388	105	23	.
2006	9	385	98	27	.
2007	9	382	96	27	.
2008	9	378	87	27	.
2009	9	374	84	27	.
2010	9	367	75	27	.
2011	9	359	66	27	.
2012	9	348	62	26	.
2013	9	332	50	26	.
2014	9	329	46	25	.
2015	9	320	35	22	.
2016	9	314	29	23	.



NUMBER OF BANKING OFFICES

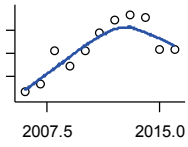
Federal Deposit Insurance Corporation, Data Book, Operating Banks and Branches

Year	County	State of Kansas	Non Metro Kansas	County Rank	Per 1000 or \$ Per Capita
2000	20	1,398	709	15	.
2001	20	1,424	714	15	.
2002	21	1,447	711	13	.
2003	21	1,461	716	14	.
2004	21	1,485	716	14	.
2005	21	1,505	721	15	.
2006	21	1,518	722	15	.
2007	20	1,543	729	16	.
2008	20	1,556	729	16	.
2009	21	1,569	729	15	.
2010	21	1,561	723	14	.
2011	21	1,559	720	15	.
2012	21	1,533	713	15	.
2013	21	1,518	707	15	.
2014	20	1,491	696	15	.
2015	19	1,472	685	15	.
2016	19	1,464	678	15	.

County: county value. Kansas: state value. County Rank: highest county value ranked #1. (\$000): thousands of dollars. Nonmetro Kansas: Kansas total less Metropolitan Areas as defined by the Office of Management and Budget (OMB; released 2/28/2013). Per 1000: For nonmoney amounts, Per 1000=(county value / county population for the same year as the data) x 1000. \$ Per capita=(county value / county population for the same year as the data). Value= . indicates missing or suppressed data or value not calculated.

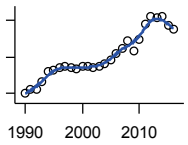
Government

TANGIBLE ASSESSED VALUATION
(KDoR, million\$; 2006-)



Kansas Department of Revenue,
Division of Property Valuation, Statistical
Report of Property Assessment and
Taxation

Year	County	State of Kansas	Non Metro Kansas	County Rank	Per 1000 or \$ Per Capita
2006	206.4	28,964.3	10,354.3	28	7.5
2007	213.3	30,086.9	10,406.6	29	7.8
2008	242.0	31,000.3	10,943.1	25	8.9
2009	228.6	30,312.3	10,650.1	27	8.3
2010	242.3	29,450.2	10,265.0	23	8.8
2011	257.3	29,963.6	10,681.2	21	9.3
2012	268.7	30,382.9	10,996.5	20	9.8
2013	272.8	30,850.2	11,164.0	19	9.9
2014	270.1	31,783.0	11,509.3	21	9.9
2015	243.5	32,335.7	11,167.6	23	9.0
2016	242.7	33,156.3	11,028.2	25	9.1



SALES TAX COLLECTIONS (\$)

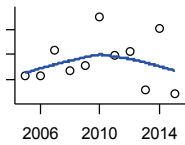
Kansas Department of Revenue

Year	County	State of Kansas	Non Metro Kansas	County Rank	Per 1000 or \$ Per Capita
1990	9,994,947	774,644,032	322,901,291	10	340,172.5
1991	10,898,987	813,200,448	348,677,002	10	371,421.3
1992	10,824,279	726,680,256	234,875,543	10	365,858.1
1993	12,996,754	937,521,920	296,141,081	11	441,525.8
1994	15,862,976	1,157,664,000	369,236,280	14	540,236.9
1995	16,156,007	1,212,060,160	386,456,981	13	554,579.4
1996	17,077,714	1,286,136,192	404,508,887	13	590,617.8
1997	17,348,632	1,354,385,664	417,767,713	13	599,261.9
1998	17,183,376	1,422,059,136	425,704,638	15	596,852.2
1999	16,678,222	1,452,454,656	423,545,768	16	585,180.2
2000	17,194,110	1,475,831,808	441,551,062	15	609,612.1
2001	17,196,042	1,481,026,688	434,871,136	15	619,208.6
2002	17,116,484	1,561,316,864	453,007,862	17	618,280.7
2003	17,272,080	1,626,782,976	471,668,008	17	626,231.1
2004	18,099,672	1,691,899,008	491,598,477	16	660,813.1
2005	19,313,204	1,744,980,352	508,788,053	16	701,380.2
2006	20,906,272	1,851,694,720	547,001,022	15	761,335.5
2007	22,275,056	1,917,546,752	574,948,931	14	810,237.7
2008	24,636,058	1,990,655,744	606,298,467	13	901,957.2
2009	21,808,365	1,866,223,078	565,475,017	14	792,282.4
2010	24,935,630	2,075,193,413	637,201,077	14	901,049.0
2011	29,238,272	2,347,193,367	723,576,813	14	1,056,448.6
2012	31,123,111	2,456,292,294	761,760,944	14	1,131,132.5
2013	31,002,998	2,489,204,048	767,684,555	14	1,130,464.8
2014	31,264,205	2,539,886,774	780,638,958	14	1,146,805.3
2015	28,857,981	2,642,374,740	771,874,734	15	1,065,184.6
2016	27,711,697	2,732,611,350	770,333,199	17	1,034,984.0

County: county value. Kansas: state value. County Rank: highest county value ranked #1. (\$000): thousands of dollars. Nonmetro Kansas: Kansas total less Metropolitan Areas as defined by the Office of Management and Budget (OMB; released 2/28/2013). Per 1000: For nonmoney amounts, Per 1000=(county value / county population for the same year as the data) x 1000. \$ Per capita=(county value / county population for the same year as the data). Value= . indicates missing or suppressed data or value not calculated.

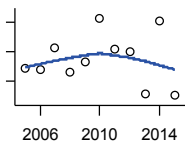
Crime

CRIME INDEX OFFENSES



Kansas Bureau of Investigation, Note: Data are aggregated from data reported by individual police departments and subject to be incomplete.

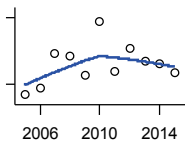
Year	County	State of Kansas	Non Metro Kansas	County Rank	Per 1000 or \$ Per Capita
2005	1,013	111,856	32,671	19	36.8
2006	1,014	110,032	.	18	36.9
2007	1,118	111,035	30,760	18	40.7
2008	1,033	93,996	28,383	17	37.8
2009	1,052	98,757	28,437	17	38.2
2010	1,251	98,354	27,585	14	45.2
2011	1,098	96,638	26,434	17	39.7
2012	1,110	98,914	27,728	16	40.3
2013	956	93,054	25,244	17	34.9
2014	1,203	86,323	24,048	13	44.1
2015	939	88,590	22,222	15	34.7



PROPERTY CRIMES

Kansas Bureau of Investigation, Note: Data are aggregated from data reported by individual police departments and subject to be incomplete.

Year	County	State of Kansas	Non Metro Kansas	County Rank	Per 1000 or \$ Per Capita
2005	943	101,414	29,927	19	34.2
2006	938	99,110	.	18	34.2
2007	1,011	99,632	27,539	18	36.8
2008	928	83,964	25,233	17	34.0
2009	964	87,658	25,487	17	35.0
2010	1,114	87,926	24,638	14	40.3
2011	1,007	86,547	23,804	17	36.4
2012	998	88,707	24,813	16	36.3
2013	856	83,551	22,632	16	31.2
2014	1,105	76,794	21,424	12	40.5
2015	849	77,997	19,590	14	31.3



VIOLENT CRIMES

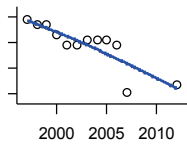
Kansas Bureau of Investigation, Note: Data are aggregated from data reported by individual police departments and subject to be incomplete.

Year	County	State of Kansas	Non Metro Kansas	County Rank	Per 1000 or \$ Per Capita
2005	70	10,442	2,744	22	2.5
2006	76	10,922	.	21	2.8
2007	107	11,403	3,221	22	3.9
2008	105	10,032	3,150	19	3.8
2009	88	11,099	2,950	22	3.2
2010	137	10,428	2,947	15	5.0
2011	91	10,091	2,630	19	3.3
2012	112	10,207	2,915	19	4.1
2013	100	9,503	2,612	17	3.6
2014	98	9,529	2,624	18	3.6
2015	90	10,593	2,632	19	3.3

County: county value. Kansas: state value. County Rank: highest county value ranked #1. (\$000): thousands of dollars. Nonmetro Kansas: Kansas total less Metropolitan Areas as defined by the Office of Management and Budget (OMB; released 2/28/2013). Per 1000: For nonmoney amounts, Per 1000=(county value / county population for the same year as the data) x 1000. \$ Per capita=(county value / county population for the same year as the data). Value= . indicates missing or suppressed data or value not calculated.

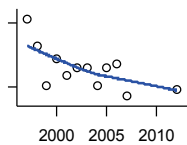
Agriculture

NUMBER OF FARMS



Kansas Agricultural Statistics, Kansas Farm Facts

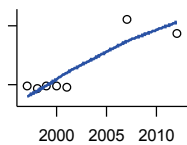
Year	County	State of Kansas	Non Metro Kansas	County Rank	Per 1000 or \$ Per Capita
1997	820	64,000	47,350	24	28.3
1998	810	65,000	48,290	26	28.1
1999	810	65,000	48,290	26	28.4
2000	790	64,000	47,500	26	28.0
2001	770	63,000	46,670	29	27.7
2002	770	63,000	46,670	29	27.8
2003	780	64,500	47,570	29	28.3
2004	780	64,500	47,570	29	28.5
2005	780	64,500	47,570	29	28.3
2006	770	64,000	47,070	29	28.0
2007	678	65,531	47,532	37	24.7
2012	694	61,773	45,085	32	25.2



TOTAL ACRES HARVESTED

Kansas Agricultural Statistics, Kansas Farm Facts

Year	County	State of Kansas	Non Metro Kansas	County Rank	Per 1000 or \$ Per Capita
1997	383,620	22,846,000	19,181,890	6	13,251.1
1998	358,300	22,143,500	18,708,130	7	12,445.3
1999	320,460	21,708,900	18,340,040	12	11,243.8
2000	345,620	21,639,000	18,313,340	8	12,253.9
2001	330,620	21,847,900	18,495,540	9	11,905.2
2002	337,550	20,230,400	16,878,370	6	12,193.0
2003	338,140	21,827,700	18,444,130	8	12,259.9
2004	320,800	20,876,900	17,514,970	7	11,712.3
2005	338,130	21,936,500	18,598,050	7	12,279.6
2006	341,520	21,412,700	18,070,400	7	12,437.0
2007	310,717	19,886,655	17,022,701	8	11,302.1
2012	317,667	21,043,596	17,750,237	9	11,545.2



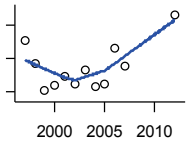
VALUE: LIVESTOCK AND POULTRY (\$000)

Kansas Agricultural Statistics, Kansas Farm Facts

Year	County	State of Kansas	Non Metro Kansas	County Rank	Per 1000 or \$ Per Capita
1997	48,193	2,806,445	2,493,369	15	1,664.7
1998	39,110	2,670,432	2,371,235	16	1,358.5
1999	46,506	2,849,061	2,546,358	14	1,631.7
2000	46,158	2,901,469	2,601,622	15	1,636.5
2001	43,683	2,693,274	2,427,320	11	1,573.0
2007	217,537	9,525,971	.	9	7,912.7
2012	182,757	11,476,571	10,871,282	15	6,642.1

County: county value. Kansas: state value. County Rank: highest county value ranked #1. (\$000): thousands of dollars. Nonmetro Kansas: Kansas total less Metropolitan Areas as defined by the Office of Management and Budget (OMB; released 2/28/2013). Per 1000: For nonmoney amounts, Per 1000=(county value / county population for the same year as the data) x 1000. \$ Per capita=(county value / county population for the same year as the data). Value= . indicates missing or suppressed data or value not calculated.

Agriculture



VALUE:FIELD CROPS (\$000)
EXCLUDING GOVERNMENT
PROGRAM PAYMENTS

Kansas Agricultural Statistics, Kansas
Farm Facts

Year	County	State of Kansas	Non Metro Kansas	County Rank	Per 1000 or \$ Per Capita
1997	81,031	4,474,942	3,765,746	8	2,799.0
1998	67,431	3,594,319	3,101,461	5	2,342.2
1999	51,073	3,118,193	2,702,523	13	1,792.0
2000	54,426	2,915,660	2,518,540	8	1,929.7
2001	59,554	3,283,117	2,838,667	6	2,144.5
2002	54,949	3,011,855	2,533,782	10	1,984.9
2003	62,934	3,623,255	3,118,639	10	2,281.8
2004	53,428	3,445,688	2,870,199	16	1,950.6
2005	55,208	3,678,123	3,155,033	15	2,004.9
2006	76,621	4,308,716	3,645,054	8	2,790.3
2007	65,249	4,887,212	.	24	2,373.4
2012	96,206	6,983,993	5,983,653	24	3,496.5

County: county value. Kansas: state value. County Rank: highest county value ranked #1. (\$000): thousands of dollars. Nonmetro Kansas: Kansas total less Metropolitan Areas as defined by the Office of Management and Budget (OMB; released 2/28/2013). Per 1000: For nonmoney amounts, Per 1000=(county value / county population for the same year as the data) x 1000. \$ Per capita=(county value / county population for the same year as the data). Value= . indicates missing or suppressed data or value not calculated.