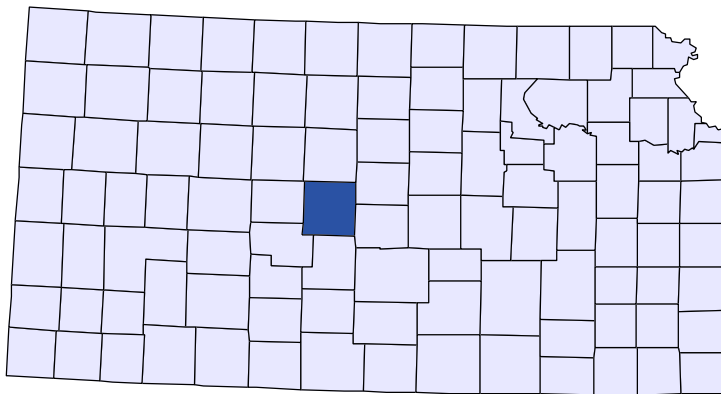




Kansas County Profiles

Barton County



The University
of Kansas

Institute for Policy
& Social Research

KU INSTITUTE FOR POLICY
& SOCIAL RESEARCH
The University of Kansas

1541 Lilac Lane, Rm. 607
Blake Hall
Lawrence, KS 66045-3129

Foreword

The Kansas County Profile Report is published by the Institute for Policy & Social Research (IPSR) at the University of Kansas with support from the KU University Center project.* Special thanks to Xanthippe Wedel, senior research data engineer, who compiles and updates the county profiles and Genna Hurd, associate researcher, who provides editorial review.

County reports can be generated for any county in Kansas by simply clicking on the county from the web site:

<http://ipsr.ku.edu/ksdata/kcced/profiles/>

The Kansas County Profile Report contains 12 categories of information: Population, Vital Statistics and Health, Housing, Education, Social Environment, Business, Employment, Income, Banking, Government, Crime, and Agriculture. For more information about Kansas, please refer to the Kansas Statistical Abstract, available online at:

<http://ipsr.ku.edu/ksdata/ksah/>

We are always looking for ways to improve the Kansas County Profile Report and we welcome your suggestions and comments. Please address any correspondence to the Institute for Policy & Social Research, The University of Kansas, 607 Blake Hall, 1541 Lilac Lane, Lawrence, Kansas 66045-3129, e-mail ipsr@ku.edu or call 785-864-3701.

**The KU University Center is a joint project by the KU Center for Entrepreneurship in the School of Business and the Institute for Policy & Social Research at the University of Kansas. This project is supported by the Economic Development Administration, U.S. Department of Commerce, through its University Centers Program.*

The mission of EDA is to lead the federal economic development agenda by promoting innovation and competitiveness, preparing American regions for growth and success in the worldwide economy.

Kansas County Profiles Table of Contents

Population

Total Population (Decennial Census)	1
Estimated Population (Current Population Reports)	1
Projected Population	2
Urban Population	2
Rural Population	2
Net Migration (Decade Ending...)	2
Median Age	3

Population (Age Groups)

Population Under 18 (Decennial Census)	3
Population Age 18 and Over (Decennial Census)	3
Population Age 65 and Over (Decennial Census)	3
Population Age 85 and Over (Decennial Census)	3

Vital Statistics and Health

Live Births	4
Deaths	4
Marriages	4
Divorces and Annulments	5
Physicians: M.D. Physicians	5
Physicians: D.O. Physicians	5
Dentists	6
Number of Hospitals	6
Number of Hospital Beds	6
Adult Care Homes	6
Adult Care Homes: Number of Beds	7
Assisted Living Homes	7
Assisted Living Homes: Number of Beds	7

Housing

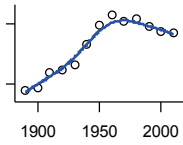
Housing Units (Decennial Census)	7
Housing Units (Estimated)	8
Occupied Housing Units	8
Owner Occupied Housing Units	8
Renter Occupied Housing Units	8
Vacant Housing Units	9
Median Value (\$): Owner Occupied Housing Units	9
Median Contract Rent (\$)	9
Fair Market Rent: 2 Bedrooms	9

Education

Population Age 25 and Over	10
Percent of Population 25+ with High School or Higher Education	10
Percent of Population 25+ with Bachelors Degree or Higher Education	10
Public School Enrollment (FTE- School Year Beginning...)	10
Pupil/Teacher Ratio (School Year Beginning...)	11

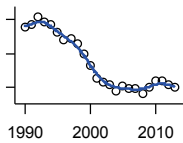
Population

DECENNIAL CENSUS:TOTAL POPULATION



U.S. Census Bureau

Year	County	State of Kansas	Non Metro Kansas	County Rank	Per 1000 or \$ Per Capita
1890	13,172	1,427,096	967,013	51	.
1900	13,784	1,470,495	981,287	50	.
1910	17,876	1,690,949	1,137,589	35	.
1920	18,422	1,769,257	1,154,858	32	.
1930	19,776	1,880,999	1,182,748	31	.
1940	25,010	1,801,028	1,100,437	17	.
1950	29,909	1,905,299	1,058,170	14	.
1960	32,368	2,178,611	1,040,331	14	.
1970	30,663	2,249,071	979,822	15	.
1980	31,343	2,364,236	1,001,534	15	.
1990	29,382	2,477,588	961,591	18	.
2000	28,205	2,688,824	979,187	20	.
2010	27,674	2,853,118	956,485	22	.



ESTIMATED POPULATION

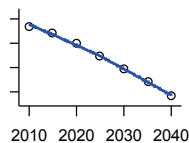
U.S. Census Bureau

Year	County	State of Kansas	Non Metro Kansas	County Rank	Per 1000 or \$ Per Capita
1990	29,270	2,481,349	960,864	18	.
1991	29,344	2,498,722	960,509	18	.
1992	29,586	2,532,394	968,355	18	.
1993	29,436	2,556,547	971,429	18	.
1994	29,363	2,580,513	976,527	19	.
1995	29,132	2,601,007	981,095	19	.
1996	28,915	2,614,554	979,387	18	.
1997	28,950	2,635,292	979,375	19	.
1998	28,790	2,660,598	980,217	19	.
1999	28,501	2,678,338	980,235	19	.
2000	28,163	2,693,681	978,390	20	.
2001	27,771	2,702,162	971,831	21	.
2002	27,684	2,713,535	965,192	20	.
2003	27,581	2,723,004	960,462	20	.
2004	27,390	2,734,373	956,333	21	.
2005	27,536	2,745,299	951,702	20	.
2006	27,460	2,762,931	948,398	22	.
2007	27,492	2,783,785	947,583	22	.
2008	27,314	2,808,076	948,632	22	.
2009	27,526	2,832,704	950,407	22	.
2010	27,687	2,858,910	957,744	22	.
2011	27,709	2,869,548	955,836	22	.
2012	27,577	2,885,398	957,104	22	.
2013	27,509	2,893,957	954,249	22	.

County: county value. Kansas: state value. County Rank: highest county value ranked #1. (\$000): thousands of dollars. Nonmetro Kansas: Kansas total less Metropolitan Areas as defined by the Office of Management and Budget (OMB; released 2/28/2013). Per 1000: For nonmoney amounts, Per 1000=(county value / county population for the same year as the data) x 1000. \$ Per capita=(county value / county population for the same year as the data). Value= . indicates missing or suppressed data or value not calculated.

Population

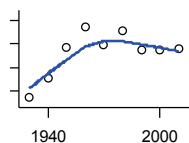
PROJECTED POPULATION
(WICHITA STATE UNIV; 2012)



Center for Economic Development and Business Research, W. Frank Barton School of Business, Wichita State University

Year	County	State of Kansas	Non Metro Kansas	County Rank	Per 1000 or \$ Per Capita
2010	27,382	2,831,749	946,565	.	.
2015	26,817	2,916,705	934,356	.	.
2020	26,019	3,003,691	918,810	.	.
2025	25,001	3,071,541	896,897	.	.
2030	23,958	3,137,345	874,160	.	.
2035	22,889	3,195,809	.	.	.
2040	21,685	3,238,356	.	.	.

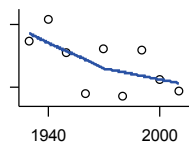
URBAN POPULATION



U.S. Census Bureau: Decennial Census

Year	County	State of Kansas	Non Metro Kansas	County Rank	Per 1000 or \$ Per Capita
1930	8,549	729,834	341,321	24	.
1940	12,763	753,941	354,522	14	.
1950	19,246	993,220	409,185	12	.
1960	23,647	1,328,741	472,565	10	.
1970	19,843	1,484,870	470,446	15	.
1980	22,794	1,575,899	492,167	14	.
1990	18,609	1,712,564	482,296	19	.
2000	18,812	1,920,081	508,836	21	.
2010	18,886	2,116,961	513,153	21	.

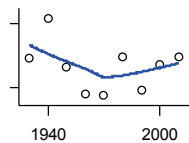
RURAL POPULATION



U.S. Census Bureau

Year	County	State of Kansas	Non Metro Kansas	County Rank	Per 1000 or \$ Per Capita
1930	11,227	1,151,165	841,427	44	.
1940	12,247	1,047,087	745,915	29	.
1950	10,663	912,079	648,985	30	.
1960	8,721	849,870	567,766	35	.
1970	10,820	761,708	509,294	18	.
1980	8,549	787,780	509,367	30	.
1990	10,773	765,010	479,281	20	.
2000	9,393	768,337	470,349	25	.
2010	8,788	736,157	443,332	28	.

NET MIGRATION: DECADE ENDING...



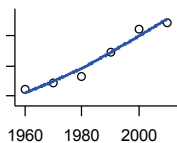
calculated by the Institute for Policy and Social Research, The University of Kansas

Year	County	State of Kansas	Non Metro Kansas	County Rank	Per 1000 or \$ Per Capita
1930	-1,278	-66,132	-100,271	62	-64.6
1940	2,543	-192,649	-165,617	3	101.7
1950	-2,057	-84,329	-153,613	64	-68.8
1960	-4,581	-38,999	-146,885	101	-141.5
1970	-4,798	-119,662	-112,585	99	-156.5
1980	-1,053	-21,983	-14,022	98	-33.6
1990	-4,293	-61,835	-87,905	99	-146.1
2000	-1,846	68,960	-4,841	101	-65.4
2010	-1,123	5,578	-48,626	97	-40.6

County: county value. Kansas: state value. County Rank: highest county value ranked #1. (\$000): thousands of dollars. Nonmetro Kansas: Kansas total less Metropolitan Areas as defined by the Office of Management and Budget (OMB; released 2/28/2013). Per 1000: For nonmoney amounts, Per 1000=(county value / county population for the same year as the data) x 1000. \$ Per capita=(county value / county population for the same year as the data). Value= . indicates missing or suppressed data or value not calculated.

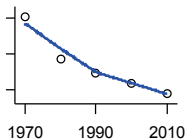
Population

MEDIAN AGE



U.S. Census Bureau: Decennial Census

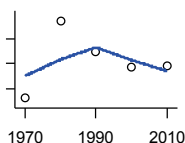
Year	County	State of Kansas	Non Metro Kansas	County Rank	Per 1000 or \$ Per Capita
1960	28.6	26.9	.	80	.
1970	29.8	28.7	.	77	.
1980	30.8	30.1	.	77	.
1990	34.8	32.9	.	71	.
2000	38.6	35.2	.	60	.
2010	39.7	36.0	.	70	.



POPULATION UNDER 18 (DECENNIAL CENSUS)

U.S. Census Bureau: Decennial Census

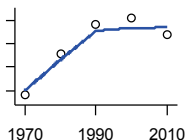
Year	County	State of Kansas	Non Metro Kansas	County Rank	Per 1000 or \$ Per Capita
1970	11,046	746,354	311,386	12	.
1980	8,678	649,035	270,128	15	.
1990	7,925	661,614	256,807	19	.
2000	7,330	712,993	256,660	22	.
2010	6,784	726,939	237,930	22	.



POPULATION AGE 18 AND OVER (DECENNIAL CENSUS)

U.S. Census Bureau: Decennial Census

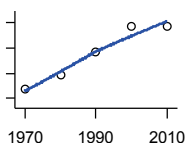
Year	County	State of Kansas	Non Metro Kansas	County Rank	Per 1000 or \$ Per Capita
1970	19,617	1,500,224	668,354	16	.
1980	22,695	1,714,282	731,286	15	.
1990	21,457	1,815,960	704,770	18	.
2000	20,875	1,975,425	722,525	20	.
2010	20,890	2,126,179	718,555	22	.



POPULATION AGE 65 AND OVER (DECENNIAL CENSUS)

U.S. Census Bureau: Decennial Census

Year	County	State of Kansas	Non Metro Kansas	County Rank	Per 1000 or \$ Per Capita
1970	3,403	266,201	149,407	19	.
1980	4,282	306,263	165,380	16	.
1990	4,913	342,571	169,275	14	.
2000	5,043	356,229	162,706	15	.
2010	4,688	376,116	155,272	16	.



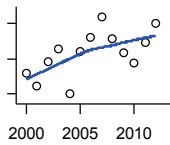
POPULATION AGE 85 AND OVER (DECENNIAL CENSUS)

U.S. Census Bureau: Decennial Census

Year	County	State of Kansas	Non Metro Kansas	County Rank	Per 1000 or \$ Per Capita
1970	274	23,899	13,734	25	.
1980	387	33,455	18,831	23	.
1990	565	42,241	22,993	18	.
2000	764	51,770	26,654	15	.
2010	768	59,318	26,250	16	.

County: county value. Kansas: state value. County Rank: highest county value ranked #1. (\$000): thousands of dollars. Nonmetro Kansas: Kansas total less Metropolitan Areas as defined by the Office of Management and Budget (OMB; released 2/28/2013). Per 1000: For nonmoney amounts, Per 1000=(county value / county population for the same year as the data) x 1000. \$ Per capita=(county value / county population for the same year as the data). Value= . indicates missing or suppressed data or value not calculated.

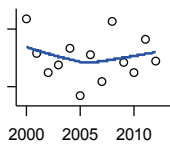
Vital Statistics and Health



BIRTHS (LIVE)

Kansas Department of Health and Environment

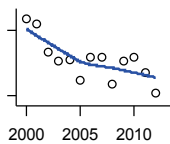
Year	County	State of Kansas	Non Metro Kansas	County Rank	Per 1000 or \$ Per Capita
2000	343	39,654	13,444	23	12.2
2001	328	38,832	13,042	25	11.8
2002	357	39,338	12,961	21	12.9
2003	371	39,353	12,873	21	13.5
2004	319	39,553	12,817	24	11.6
2005	368	39,701	12,837	22	13.4
2006	384	40,896	13,272	21	14.0
2007	408	41,951	13,671	20	14.8
2008	383	41,815	13,682	22	14.0
2009	366	41,388	13,743	22	13.3
2010	355	40,439	13,172	23	12.8
2011	379	39,628	12,957	22	13.7
2012	401	40,304	13,197	21	14.5



DEATHS

Kansas Department of Health and Environment

Year	County	State of Kansas	Non Metro Kansas	County Rank	Per 1000 or \$ Per Capita
2000	351	24,676	11,273	14	12.4
2001	315	24,590	10,897	16	11.3
2002	294	24,968	11,166	17	10.6
2003	302	24,417	10,701	15	10.9
2004	320	23,720	10,430	16	11.7
2005	270	24,632	10,674	20	9.8
2006	313	24,489	10,636	15	11.4
2007	285	24,413	10,651	18	10.4
2008	348	24,896	10,712	15	12.7
2009	305	23,997	10,051	16	11.1
2010	295	24,428	10,228	16	10.7
2011	330	25,114	10,626	17	11.9
2012	307	25,084	10,349	16	11.1



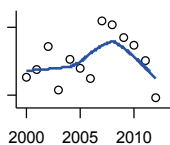
MARRIAGES

Kansas Department of Health and Environment

Year	County	State of Kansas	Non Metro Kansas	County Rank	Per 1000 or \$ Per Capita
2000	251	20,426	7,726	18	8.9
2001	246	20,457	7,897	19	8.9
2002	220	19,783	7,256	20	7.9
2003	212	18,722	6,918	20	7.7
2004	213	19,174	7,215	20	7.8
2005	194	18,745	6,914	21	7.0
2006	216	18,836	6,964	20	7.9
2007	216	18,910	6,982	22	7.9
2008	191	18,717	6,858	23	7.0
2009	212	18,268	6,619	19	7.7
2010	216	18,150	6,569	19	7.8
2011	202	17,897	6,484	19	7.3
2012	183	18,154	6,396	21	6.6

County: county value. Kansas: state value. County Rank: highest county value ranked #1. (\$000): thousands of dollars. Nonmetro Kansas: Kansas total less Metropolitan Areas as defined by the Office of Management and Budget (OMB; released 2/28/2013). Per 1000: For nonmoney amounts, Per 1000=(county value / county population for the same year as the data) x 1000. \$ Per capita=(county value / county population for the same year as the data). Value= . indicates missing or suppressed data or value not calculated.

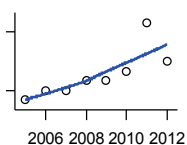
Vital Statistics and Health



DIVORCES AND ANNULMENTS

Kansas Department of Health and Environment

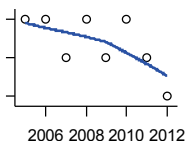
Year	County	State of Kansas	Non Metro Kansas	County Rank	Per 1000 or \$ Per Capita
2000	56	10,105	4,198	32	2.0
2001	62	9,885	4,022	28	2.2
2002	83	9,645	3,924	26	3.0
2003	44	8,644	3,637	36	1.6
2004	72	8,759	3,682	25	2.6
2005	64	8,476	3,434	28	2.3
2006	54	9,145	3,551	32	2.0
2007	106	9,347	3,663	18	3.9
2008	102	9,818	4,030	23	3.7
2009	91	10,333	3,801	25	3.3
2010	84	10,579	3,885	28	3.0
2011	70	10,445	3,696	28	2.5
2012	37	9,782	3,389	39	1.3



PHYSICIANS: M.D. PHYSICIANS

Kansas Department of Health and Environment (1981-2005,2010 -);Kansas Health Policy Authority (2006-2009)

Year	County	State of Kansas	Non Metro Kansas	County Rank	Per 1000 or \$ Per Capita
2005	29	4,241	923	18	1.1
2006	30	4,310	968	19	1.1
2007	30	5,309	1,060	21	1.1
2008	31	5,110	1,033	20	1.1
2009	31	5,249	1,011	19	1.1
2010	32	5,192	995	17	1.2
2011	37	5,243	1,009	16	1.3
2012	33	5,693	1,056	18	1.2



PHYSICIANS: D.O. PHYSICIANS

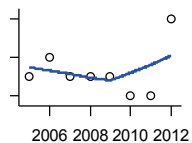
Kansas Department of Health and Environment (1981-2005,2010 -);Kansas Health Policy Authority (2006-2009)

Year	County	State of Kansas	Non Metro Kansas	County Rank	Per 1000 or \$ Per Capita
2005	7	553	173	15	0.3
2006	7	508	170	13	0.3
2007	6	569	169	18	0.2
2008	7	558	165	16	0.3
2009	6	564	159	17	0.2
2010	7	583	167	14	0.3
2011	6	502	149	15	0.2
2012	5	718	200	25	0.2

County: county value. Kansas: state value. County Rank: highest county value ranked #1. (\$000): thousands of dollars. Nonmetro Kansas: Kansas total less Metropolitan Areas as defined by the Office of Management and Budget (OMB; released 2/28/2013). Per 1000: For nonmoney amounts, Per 1000=(county value / county population for the same year as the data) x 1000. \$ Per capita=(county value / county population for the same year as the data). Value= . indicates missing or suppressed data or value not calculated.

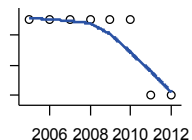
Vital Statistics and Health

DENTISTS



Kansas Department of Health and Environment (1981-2006,2010 -);Kansas Health Policy Authority (2007-2009)

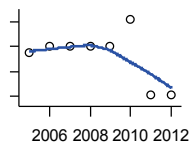
Year	County	State of Kansas	Non Metro Kansas	County Rank	Per 1000 or \$ Per Capita
2005	12	1,347	377	21	0.4
2006	13	1,381	377	18	0.5
2007	12	1,335	366	21	0.4
2008	12	1,392	370	22	0.4
2009	12	1,353	367	22	0.4
2010	11	1,401	380	21	0.4
2011	11	1,338	359	20	0.4
2012	15	1,434	413	17	0.5



NUMBER OF HOSPITALS

American Hospital Association, American Hospital Association Guide to the Health Care Field

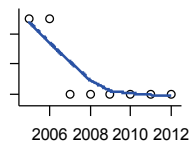
Year	County	State of Kansas	Non Metro Kansas	County Rank	Per 1000 or \$ Per Capita
2005	4	158	106	4	.
2006	4	158	106	4	.
2007	4	159	105	4	.
2008	4	159	105	4	.
2009	4	158	106	4	.
2010	4	158	105	5	.
2011	3	158	104	7	.
2012	3	157	104	7	.



NUMBER OF HOSPITAL BEDS

Kansas Department of Health and Environment

Year	County	State of Kansas	Non Metro Kansas	County Rank	Per 1000 or \$ Per Capita
2005	115	12,389	5,749	22	4.2
2006	120	11,992	5,593	20	4.4
2007	120	12,171	5,725	21	4.4
2008	120	12,332	5,788	21	4.4
2009	120	12,283	5,740	19	4.4
2010	142	12,218	5,605	15	5.1
2011	81	12,182	5,419	33	2.9
2012	81	12,002	5,439	32	2.9



ADULT CARE HOMES

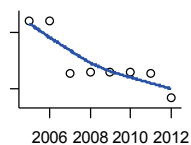
Kansas Department of Health and Environment (- 2007); Kansas Department on Aging (2008-)

Year	County	State of Kansas	Non Metro Kansas	County Rank	Per 1000 or \$ Per Capita
2005	4	308	177	28	.
2006	4	307	178	28	.
2007	3	302	173	37	.
2008	3	298	167	36	.
2009	3	299	166	36	.
2010	3	301	166	36	.
2011	3	299	164	36	.
2012	3	302	164	36	.

County: county value. Kansas: state value. County Rank: highest county value ranked #1. (\$000): thousands of dollars. Nonmetro Kansas: Kansas total less Metropolitan Areas as defined by the Office of Management and Budget (OMB; released 2/28/2013). Per 1000: For nonmoney amounts, Per 1000=(county value / county population for the same year as the data) x 1000. \$ Per capita=(county value / county population for the same year as the data). Value= . indicates missing or suppressed data or value not calculated.

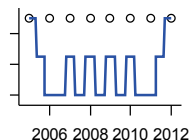
Vital Statistics and Health

ADULT CARE HOMES: NUMBER OF BEDS



Kansas Department of Health and Environment (- 2007); Kansas Department on Aging (2008-)

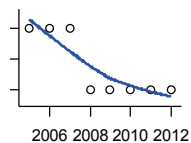
Year	County	State of Kansas	Non Metro Kansas	County Rank	Per 1000 or \$ Per Capita
2005	293	21,996	10,979	19	10.6
2006	293	21,821	10,944	18	10.7
2007	237	21,664	10,770	24	8.6
2008	238	21,340	10,339	24	8.7
2009	238	21,378	10,166	24	8.6
2010	238	21,206	9,877	24	8.6
2011	236	20,916	9,681	23	8.5
2012	210	20,992	9,577	27	7.6



ASSISTED LIVING HOMES

Kansas Department of Health and Environment (- 2007); Kansas Department on Aging (2008-)

Year	County	State of Kansas	Non Metro Kansas	County Rank	Per 1000 or \$ Per Capita
2005	4	247	135	23	.
2006	4	246	.	23	.
2007	4	243	.	24	.
2008	4	262	.	25	.
2009	4	266	.	25	.
2010	4	272	.	25	.
2011	4	294	139	25	.
2012	4	302	141	25	.



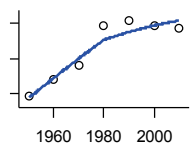
NUMBER OF ASSISTED LIVING BEDS

Kansas Department of Health and Environment (- 2007); Kansas Department on Aging (2008-)

Year	County	State of Kansas	Non Metro Kansas	County Rank	Per 1000 or \$ Per Capita
2005	135	9,510	4,143	17	4.9
2006	135	9,850	.	17	4.9
2007	135	10,265	.	20	4.9
2008	131	10,562	.	19	4.8
2009	131	10,704	.	19	4.8
2010	131	10,872	.	19	4.7
2011	131	11,327	4,295	19	4.7
2012	131	11,500	4,330	19	4.8

Housing

HOUSING UNITS (DECENNIAL)



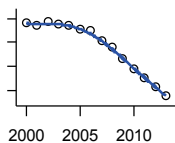
U.S. Census Bureau: Decennial Census

Year	County	State of Kansas	Non Metro Kansas	County Rank	Per 1000 or \$ Per Capita
1950	8,853	586,650	331,125	14	296.0
1960	9,846	672,899	334,084	14	304.2
1970	10,636	789,735	369,247	15	346.9
1980	12,871	955,207	424,284	15	410.6
1990	13,144	1,044,112	425,369	15	447.3
2000	12,888	1,131,395	430,325	17	456.9
2010	12,696	1,233,215	434,749	21	458.8

County: county value. Kansas: state value. County Rank: highest county value ranked #1. (\$000): thousands of dollars. Nonmetro Kansas: Kansas total less Metropolitan Areas as defined by the Office of Management and Budget (OMB; released 2/28/2013). Per 1000: For nonmoney amounts, Per 1000=(county value / county population for the same year as the data) x 1000. \$ Per capita=(county value / county population for the same year as the data). Value= . indicates missing or suppressed data or value not calculated.

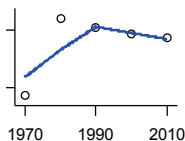
Housing

HOUSING UNITS (ESTIMATED)



U.S. Census Bureau

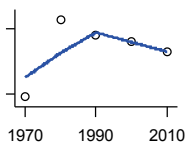
Year	County	State of Kansas	Non Metro Kansas	County Rank	Per 1000 or \$ Per Capita
2000	12,882	1,134,529	430,630	17	456.7
2001	12,871	1,146,858	431,936	17	463.5
2002	12,891	1,160,129	433,107	17	465.6
2003	12,880	1,171,620	433,904	17	467.0
2004	12,874	1,184,702	434,529	17	470.0
2005	12,858	1,195,791	434,871	17	467.0
2006	12,849	1,206,692	434,600	17	467.9
2007	12,807	1,217,608	435,429	19	465.8
2008	12,781	1,225,625	435,999	19	467.9
2009	12,730	1,230,552	435,276	20	462.5
2010	12,690	1,234,006	434,796	21	458.6
2011	12,650	1,235,368	434,349	21	456.5
2012	12,613	1,237,143	434,073	21	457.4
2013	12,576	1,239,706	433,763	21	457.2



OCCUPIED HOUSING UNITS

U.S. Census Bureau: Decennial Census

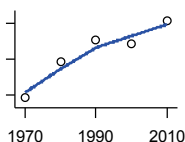
Year	County	State of Kansas	Non Metro Kansas	County Rank	Per 1000 or \$ Per Capita
1970	9,796	727,364	331,872	15	319.5
1980	11,797	872,239	378,404	15	376.4
1990	11,561	944,726	373,402	16	393.5
2000	11,393	1,037,891	382,400	17	403.9
2010	11,283	1,112,096	379,732	21	407.7



OWNER OCCUPIED HOUSING UNITS

U.S. Census Bureau: Decennial Census

Year	County	State of Kansas	Non Metro Kansas	County Rank	Per 1000 or \$ Per Capita
1970	6,915	502,585	238,292	13	225.5
1980	8,716	612,433	279,387	14	278.1
1990	8,357	641,762	265,553	14	284.4
2000	8,212	718,703	274,004	18	291.2
2010	7,971	753,532	265,198	18	288.0



RENTER OCCUPIED HOUSING UNITS

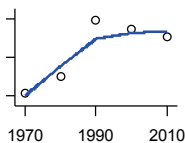
U.S. Census Bureau: Decennial Census

Year	County	State of Kansas	Non Metro Kansas	County Rank	Per 1000 or \$ Per Capita
1970	2,881	224,779	93,580	16	94.0
1980	3,081	259,806	99,017	17	98.3
1990	3,204	302,964	107,849	20	109.0
2000	3,181	319,188	108,396	20	112.8
2010	3,312	358,564	114,534	20	119.7

County: county value. Kansas: state value. County Rank: highest county value ranked #1. (\$000): thousands of dollars. Nonmetro Kansas: Kansas total less Metropolitan Areas as defined by the Office of Management and Budget (OMB; released 2/28/2013). Per 1000: For nonmoney amounts, Per 1000=(county value / county population for the same year as the data) x 1000. \$ Per capita=(county value / county population for the same year as the data). Value= . indicates missing or suppressed data or value not calculated.

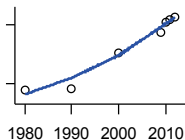
Housing

VACANT HOUSING UNITS



U.S. Census Bureau: Decennial Census

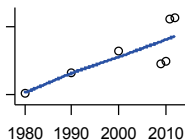
Year	County	State of Kansas	Non Metro Kansas	County Rank	Per 1000 or \$ Per Capita
1970	831	60,058	36,002	16	27.1
1980	1,007	77,912	42,286	17	32.1
1990	1,583	99,386	51,967	12	53.9
2000	1,495	93,309	47,924	12	53.0
2010	1,413	121,119	55,017	17	51.1



MEDIAN VALUE (\$): OWNER OCCUPIED HOUSING UNITS

U.S. Census Bureau, Decennial Census (- 2000), (2009 -) American Community Survey five-year average ending in year shown. Please see source for sampling variability.

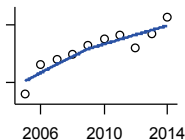
Year	County	State of Kansas	Non Metro Kansas	County Rank	Per 1000 or \$ Per Capita
1980	37,000	37,800	.	15	.
1990	37,700	52,200	.	38	.
2000	55,500	83,500	.	48	.
2009	65,900	118,500	.	68	.
2010	71,000	122,600	.	62	.
2011	72,500	125,500	.	60	.
2012	73,600	127,400	.	60	.



MEDIAN CONTRACT RENT (\$)

U.S. Census Bureau, Decennial Census (- 2000), (2009 -) American Community Survey five-year average ending in year shown. Please see source for sampling variability.

Year	County	State of Kansas	Non Metro Kansas	County Rank	Per 1000 or \$ Per Capita
1980	208	219	.	14	.
1990	299	372	.	31	.
2000	390	498	.	43	.
2009	335	491	.	53	.
2010	350	507	.	48	.
2011	531	699	.	58	.
2012	538	715	.	60	.



FAIR MARKET RENT: 2 BEDROOMS

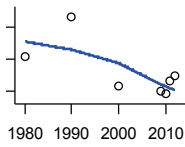
U.S. Department of Housing and Urban Development (HUD)

Year	County	State of Kansas	Non Metro Kansas	County Rank	Per 1000 or \$ Per Capita
2005	419	601	.	105	.
2006	497	608	.	105	.
2007	512	.	.	105	.
2008	525	628	.	105	.
2009	547	653	.	105	.
2010	566	678	.	105	.
2011	575	684	.	105	.
2012	540	660	.	105	.
2013	577	712	.	105	.
2014	622	746	.	105	.

County: county value. Kansas: state value. County Rank: highest county value ranked #1. (\$000): thousands of dollars. Nonmetro Kansas: Kansas total less Metropolitan Areas as defined by the Office of Management and Budget (OMB; released 2/28/2013). Per 1000: For nonmoney amounts, Per 1000=(county value / county population for the same year as the data) x 1000. \$ Per capita=(county value / county population for the same year as the data). Value= . indicates missing or suppressed data or value not calculated.

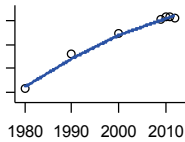
Education

POPULATION AGE 25+



U.S. Census Bureau, Decennial Census (- 2000), (2009 -) American Community Survey five-year average ending in year shown. Please see source for sampling variability.

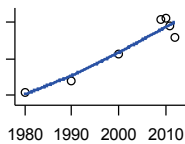
Year	County	State of Kansas	Non Metro Kansas	County Rank	Per 1000 or \$ Per Capita
1980	18,636	1,388,102	605,087	.	.
1990	19,121	1,565,936	619,414	.	.
2000	18,265	1,701,207	628,066	.	.
2009	18,213	1,775,427	611,454	.	.
2010	18,170	1,802,904	620,506	.	.
2011	18,326	1,822,400	623,005	.	.
2012	18,389	1,838,079	624,655	.	.



PERCENT HS GRADUATE OR HIGHER AGE 25+

U.S. Census Bureau, Decennial Census (- 2000), (2009 -) American Community Survey five-year average ending in year shown. Please see source for sampling variability.

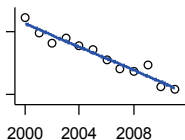
Year	County	State of Kansas	Non Metro Kansas	County Rank	Per 1000 or \$ Per Capita
1980	70.8	73.3	.	46	.
1990	78.0	81.3	.	47	.
2000	82.3	86.0	.	79	.
2009	85.3	89.0	.	85	.
2010	85.6	89.2	.	90	.
2011	85.6	89.5	.	90	.
2012	85.4	89.7	.	90	.



PERCENT BACHELORS DEGREE OR HIGHER AGE 25+

U.S. Census Bureau, Decennial Census (- 2000), (2009 -) American Community Survey five-year average ending in year shown. Please see source for sampling variability.

Year	County	State of Kansas	Non Metro Kansas	County Rank	Per 1000 or \$ Per Capita
1980	12.4	17.0	.	42	.
1990	13.6	21.1	.	50	.
2000	16.6	25.8	.	56	.
2009	20.4	28.8	.	36	.
2010	20.5	29.3	.	34	.
2011	19.6	29.7	.	50	.
2012	18.4	30.0	.	68	.



PUBLIC SCHOOL ENROLLMENT (FTE) SCHOOL YEAR BEGINNING...

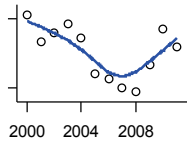
Kansas State Department of Education

Year	County	State of Kansas	Non Metro Kansas	County Rank	Per 1000 or \$ Per Capita
2000	4,731.8	448,150.8	171,372.6	21	167.8
2001	4,586.5	447,047.1	168,923.6	23	165.2
2002	4,492.5	444,860.3	166,214.9	23	162.3
2003	4,537.2	443,620.6	163,731.2	23	164.5
2004	4,464.1	441,957.2	161,296.7	23	163.0
2005	4,424.2	442,708.4	159,830.5	23	160.7
2006	4,326.4	444,878.7	159,058.4	23	157.6
2007	4,249.3	446,831.3	158,114.1	23	154.6
2008	4,228.1	447,730.0	156,605.8	23	154.8
2009	4,278.8	453,202.5	157,585.3	23	155.4
2010	4,075.8	455,405.0	157,244.1	23	147.3
2011	4,048.2	456,000.5	157,329.8	23	146.1

County: county value. Kansas: state value. County Rank: highest county value ranked #1. (\$000): thousands of dollars. Nonmetro Kansas: Kansas total less Metropolitan Areas as defined by the Office of Management and Budget (OMB; released 2/28/2013). Per 1000: For nonmoney amounts, Per 1000=(county value / county population for the same year as the data) x 1000. \$ Per capita=(county value / county population for the same year as the data). Value= . indicates missing or suppressed data or value not calculated.

Education

PUPIL/TEACHER RATIO SCHOOL YEAR BEGINNING...

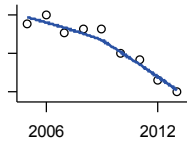


Kansas State Department of Education

Year	County	State of Kansas	Non Metro Kansas	County Rank	Per 1000 or \$ Per Capita
2000	15.1	15.4	14.0	18	.
2001	14.5	15.3	13.9	27	.
2002	14.7	15.4	14.0	27	.
2003	14.9	15.5	13.9	24	.
2004	14.6	15.3	13.7	24	.
2005	13.8	15.0	13.5	32	.
2006	13.7	14.7	13.3	30	.
2007	13.5	14.6	13.2	31	.
2008	13.4	14.4	13.0	26	.
2009	14.0	14.8	13.4	28	.
2010	14.8	15.2	13.7	23	.
2011	14.4	15.1	13.6	30	.

Social Environment

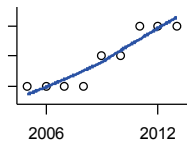
CHILD CARE FACILITIES: TOTAL CHILD CARE FACILITIES



Kansas Department of Health and Environment, Bureau of Adult and Child Care

Year	County	State of Kansas	Non Metro Kansas	County Rank	Per 1000 or \$ Per Capita
2005	105	8,258	3,421	17	3.8
2006	110	8,442	3,475	17	4.0
2007	101	8,241	3,377	19	3.7
2008	103	8,011	3,202	16	3.8
2009	103	7,853	3,110	15	3.7
2010	90	7,354	2,892	17	3.3
2011	87	6,835	2,670	16	3.1
2012	76	6,346	2,454	17	2.8
2013	70	5,754	2,218	17	2.5

CHILD CARE FACILITIES: PRESCHOOLS

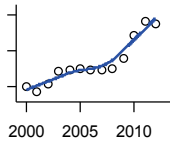


Kansas Department of Health and Environment, Bureau of Adult and Child Care

Year	County	State of Kansas	Non Metro Kansas	County Rank	Per 1000 or \$ Per Capita
2005	2	243	138	46	0.1
2006	2	221	125	42	0.1
2007	2	208	117	42	0.1
2008	2	204	112	46	0.1
2009	3	194	105	27	0.1
2010	3	194	109	27	0.1
2011	4	209	121	17	0.1
2012	4	201	120	14	0.1
2013	4	140	83	8	0.1

County: county value. Kansas: state value. County Rank: highest county value ranked #1. (\$000): thousands of dollars. Nonmetro Kansas: Kansas total less Metropolitan Areas as defined by the Office of Management and Budget (OMB; released 2/28/2013). Per 1000: For nonmoney amounts, Per 1000=(county value / county population for the same year as the data) x 1000. \$ Per capita=(county value / county population for the same year as the data). Value= . indicates missing or suppressed data or value not calculated.

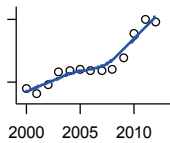
Social Environment



FOOD STAMP BENEFICIARIES

Kansas Social and Rehabilitation Services

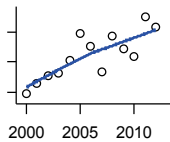
Year	County	State of Kansas	Non Metro Kansas	County Rank	Per 1000 or \$ Per Capita
2000	1,508	110,619	46,134	17	53.5
2001	1,338	117,241	48,177	19	48.2
2002	1,579	131,726	54,053	18	57.0
2003	1,912	155,908	63,289	18	69.3
2004	1,968	167,971	67,676	19	71.9
2005	2,006	175,710	69,180	19	72.9
2006	1,977	182,821	69,456	20	72.0
2007	1,962	184,035	68,589	20	71.4
2008	1,986	187,377	68,772	20	72.7
2009	2,276	208,007	75,437	19	82.7
2010	2,928	259,609	93,167	19	105.8
2011	3,334	296,542	103,737	18	120.3
2012	3,262	303,257	105,060	21	118.3



PERCENT OF POPULATION RECEIVING FOOD STAMPS

U.S. Dept. of Agriculture Food and Nutrition Service (1990-1997); Kansas Social and Rehabilitation Services (1998-)

Year	County	State of Kansas	Non Metro Kansas	County Rank	Per 1000 or \$ Per Capita
2000	5.4	4.1	.	24	.
2001	4.8	4.3	.	32	.
2002	5.7	4.9	.	27	.
2003	6.9	5.7	.	27	.
2004	7.1	6.2	.	28	.
2005	7.2	6.4	.	31	.
2006	7.1	6.6	.	31	.
2007	7.1	6.6	.	28	.
2008	7.2	6.7	.	27	.
2009	8.3	7.4	.	26	.
2010	10.6	9.1	.	26	.
2011	12.0	10.3	.	23	.
2012	11.8	10.5	.	23	.



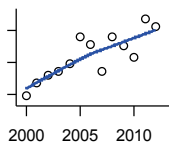
ESTIMATED NUMBER OF PEOPLE IN POVERTY

U.S. Census Bureau, Small Area Income and Poverty Estimates

Year	County	State of Kansas	Non Metro Kansas	County Rank	Per 1000 or \$ Per Capita
2000	2,973	235,087	101,119	18	105.4
2001	3,159	252,134	108,152	17	113.8
2002	3,282	265,673	109,391	17	118.6
2003	3,320	278,163	109,636	17	120.4
2004	3,539	297,733	113,822	17	129.2
2005	3,973	310,666	120,983	17	144.3
2006	3,769	327,103	125,617	19	137.3
2007	3,340	301,826	113,970	18	121.5
2008	3,923	307,804	115,439	17	143.6
2009	3,720	359,692	126,159	18	135.1
2010	3,587	374,677	134,695	21	129.6
2011	4,245	383,859	139,420	21	153.2
2012	4,088	392,095	137,670	19	148.2

County: county value. Kansas: state value. County Rank: highest county value ranked #1. (\$000): thousands of dollars. Nonmetro Kansas: Kansas total less Metropolitan Areas as defined by the Office of Management and Budget (OMB; released 2/28/2013). Per 1000: For nonmoney amounts, Per 1000=(county value / county population for the same year as the data) x 1000. \$ Per capita=(county value / county population for the same year as the data). Value= . indicates missing or suppressed data or value not calculated.

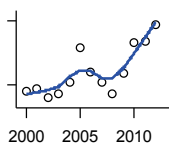
Social Environment



ESTIMATED % OF PEOPLE IN POVERTY

U.S. Census Bureau, Small Area Income and Poverty Estimates

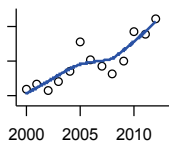
Year	County	State of Kansas	Non Metro Kansas	County Rank	Per 1000 or \$ Per Capita
2000	10.9	8.9	.	43	.
2001	11.7	9.5	.	42	.
2002	12.2	10.0	.	33	.
2003	12.4	10.4	.	26	.
2004	12.9	11.1	.	24	.
2005	14.6	11.7	.	19	.
2006	14.1	12.2	.	32	.
2007	12.4	11.2	.	35	.
2008	14.6	11.3	.	15	.
2009	14.0	13.2	.	32	.
2010	13.3	13.5	.	43	.
2011	15.7	13.8	.	24	.
2012	15.2	14.0	.	27	.



EST. NUMBER OF RELATED CHILDREN AGE 5 TO 17 IN FAMILIES IN POVERTY

U.S. Census Bureau, Small Area Income and Poverty Estimates

Year	County	State of Kansas	Non Metro Kansas	County Rank	Per 1000 or \$ Per Capita
2000	667	50,388	22,492	20	23.6
2001	682	53,755	23,775	20	24.6
2002	637	52,453	22,047	20	23.0
2003	657	55,419	22,351	20	23.8
2004	714	59,392	22,864	19	26.1
2005	874	60,203	24,754	17	31.7
2006	762	64,427	25,910	19	27.7
2007	714	61,149	24,225	20	26.0
2008	660	59,842	23,283	20	24.2
2009	752	71,850	26,851	21	27.3
2010	899	81,077	30,633	20	32.5
2011	904	82,311	30,957	22	32.6
2012	984	87,594	31,448	19	35.7



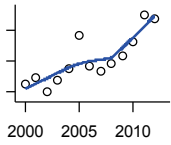
EST. % OF RELATED CHILDREN AGE 5 TO 17 IN FAMILIES IN POVERTY

U.S. Census Bureau, Small Area Income and Poverty Estimates

Year	County	State of Kansas	Non Metro Kansas	County Rank	Per 1000 or \$ Per Capita
2000	12.8	10.0	.	47	.
2001	13.4	10.8	.	53	.
2002	12.6	10.5	.	44	.
2003	13.7	11.3	.	32	.
2004	14.8	12.5	.	24	.
2005	18.3	12.8	.	13	.
2006	16.2	13.2	.	36	.
2007	15.4	12.6	.	38	.
2008	14.5	12.3	.	46	.
2009	16.1	14.7	.	41	.
2010	19.4	15.9	.	28	.
2011	19.1	16.2	.	24	.
2012	20.9	17.2	.	22	.

County: county value. Kansas: state value. County Rank: highest county value ranked #1. (\$000): thousands of dollars. Nonmetro Kansas: Kansas total less Metropolitan Areas as defined by the Office of Management and Budget (OMB; released 2/28/2013). Per 1000: For nonmoney amounts, Per 1000=(county value / county population for the same year as the data) x 1000. \$ Per capita=(county value / county population for the same year as the data). Value= . indicates missing or suppressed data or value not calculated.

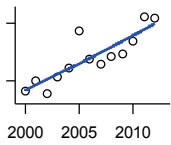
Social Environment



ESTIMATED NUMBER UNDER 18 IN POVERTY

U.S. Census Bureau, Small Area Income and Poverty Estimates

Year	County	State of Kansas	Non Metro Kansas	County Rank	Per 1000 or \$ Per Capita
2000	1,052	82,619	35,953	20	37.3
2001	1,089	87,487	37,913	20	39.2
2002	994	84,181	33,951	20	35.9
2003	1,073	93,896	37,037	20	38.9
2004	1,148	98,641	37,311	19	41.9
2005	1,372	100,253	40,072	18	49.8
2006	1,169	105,191	41,939	19	42.6
2007	1,130	100,242	38,947	20	41.1
2008	1,180	100,146	38,623	20	43.2
2009	1,233	118,187	43,748	21	44.8
2010	1,328	129,009	47,784	20	48.0
2011	1,505	133,478	49,317	21	54.3
2012	1,482	135,261	48,749	19	53.7



ESTIMATED PERCENT UNDER 18 IN POVERTY

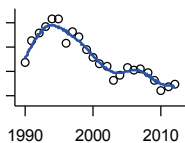
U.S. Census Bureau, Small Area Income and Poverty Estimates

Year	County	State of Kansas	Non Metro Kansas	County Rank	Per 1000 or \$ Per Capita
2000	15.0	11.9	.	45	.
2001	16.0	12.7	.	45	.
2002	14.7	12.1	.	34	.
2003	16.5	13.8	.	30	.
2004	17.4	14.6	.	25	.
2005	21.2	15.2	.	16	.
2006	18.3	15.4	.	39	.
2007	17.7	14.7	.	36	.
2008	18.6	14.6	.	29	.
2009	18.8	17.1	.	40	.
2010	20.1	18.1	.	34	.
2011	22.6	18.8	.	22	.
2012	22.5	19.0	.	24	.

County: county value. Kansas: state value. County Rank: highest county value ranked #1. (\$000): thousands of dollars. Nonmetro Kansas: Kansas total less Metropolitan Areas as defined by the Office of Management and Budget (OMB; released 2/28/2013). Per 1000: For nonmoney amounts, Per 1000=(county value / county population for the same year as the data) x 1000. \$ Per capita=(county value / county population for the same year as the data). Value= . indicates missing or suppressed data or value not calculated.

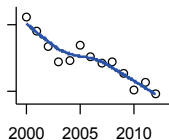
Business

ESTABLISHMENTS TOTAL COUNTY BUSINESS PATTERNS



U.S. Census Bureau, County Business Patterns

Year	County	State of Kansas	Non Metro Kansas	County Rank	Per 1000 or \$ Per Capita
1990	1,019	65,858	27,195	10	34.7
1991	1,063	65,941	27,141	9	36.2
1992	1,080	67,630	27,632	9	36.5
1993	1,093	68,930	28,051	9	37.1
1994	1,108	69,822	28,143	10	37.7
1995	1,107	70,894	28,487	10	38.0
1996	1,057	72,017	28,720	11	36.6
1997	1,082	73,924	29,262	12	37.4
1998	1,070	74,019	29,104	11	37.2
1999	1,046	74,486	28,897	11	36.7
2000	1,029	74,939	28,844	12	36.5
2001	1,016	74,565	28,646	12	36.6
2002	1,012	75,077	28,460	13	36.6
2003	982	74,972	28,279	14	35.6
2004	994	75,827	28,311	13	36.3
2005	1,008	76,173	28,140	12	36.6
2006	1,004	76,446	27,987	13	36.6
2007	1,006	77,157	28,114	13	36.6
2008	999	76,096	27,691	12	36.6
2009	982	74,698	27,220	13	35.7
2010	962	74,301	27,117	13	34.8
2011	970	73,598	26,944	13	35.0
2012	975	73,944	26,909	13	35.4



ESTABLISHMENTS: 1-19 EMPLOYEES

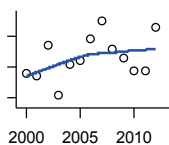
U.S. Census Bureau, County Business Patterns

Year	County	State of Kansas	Non Metro Kansas	County Rank	Per 1000 or \$ Per Capita
2000	927	64,527	25,688	12	32.9
2001	914	64,176	25,552	12	32.9
2002	900	64,886	25,440	13	32.5
2003	886	64,714	25,250	12	32.1
2004	888	65,554	25,241	12	32.4
2005	902	65,796	25,098	12	32.8
2006	891	65,764	24,867	12	32.4
2007	885	66,446	25,020	12	32.2
2008	886	65,322	24,574	12	32.4
2009	876	64,128	24,173	12	31.8
2010	861	64,015	24,175	13	31.1
2011	868	63,251	23,905	13	31.3
2012	857	63,519	23,884	13	31.1

County: county value. Kansas: state value. County Rank: highest county value ranked #1. (\$000): thousands of dollars. Nonmetro Kansas: Kansas total less Metropolitan Areas as defined by the Office of Management and Budget (OMB; released 2/28/2013). Per 1000: For nonmoney amounts, Per 1000=(county value / county population for the same year as the data) x 1000. \$ Per capita=(county value / county population for the same year as the data). Value= . indicates missing or suppressed data or value not calculated.

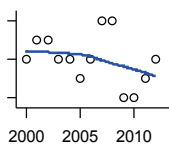
Business

**ESTABLISHMENTS: 20-99
EMPLOYEES**



U.S. Census Bureau, County Business Patterns

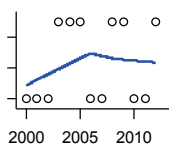
Year	County	State of Kansas	Non Metro Kansas	County Rank	Per 1000 or \$ Per Capita
2000	88	8,714	2,704	19	3.1
2001	87	8,692	2,642	19	3.1
2002	97	8,582	2,597	15	3.5
2003	81	8,642	2,616	19	2.9
2004	91	8,658	2,641	17	3.3
2005	92	8,685	2,600	17	3.3
2006	99	8,922	2,664	16	3.6
2007	105	8,938	2,624	11	3.8
2008	96	8,939	2,637	17	3.5
2009	93	8,848	2,602	16	3.4
2010	89	8,612	2,508	18	3.2
2011	89	8,668	2,588	17	3.2
2012	103	8,700	2,561	14	3.7



**ESTABLISHMENTS: 100-499
EMPLOYEES**

U.S. Census Bureau, County Business Patterns

Year	County	State of Kansas	Non Metro Kansas	County Rank	Per 1000 or \$ Per Capita
2000	14	1,555	419	18	0.5
2001	15	1,555	416	16	0.5
2002	15	1,464	388	15	0.5
2003	14	1,470	381	17	0.5
2004	14	1,463	393	17	0.5
2005	13	1,537	404	19	0.5
2006	14	1,598	411	19	0.5
2007	16	1,602	424	14	0.6
2008	16	1,653	429	13	0.6
2009	12	1,551	401	21	0.4
2010	12	1,513	387	19	0.4
2011	13	1,523	401	19	0.5
2012	14	1,567	413	17	0.5



**ESTABLISHMENTS: 500 OR MORE
EMPLOYEES**

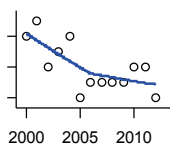
U.S. Census Bureau, County Business Patterns

Year	County	State of Kansas	Non Metro Kansas	County Rank	Per 1000 or \$ Per Capita
2000	0	143	33	105	0.0
2001	0	142	36	105	0.0
2002	0	145	35	105	0.0
2003	1	146	32	29	0.0
2004	1	152	36	29	0.0
2005	1	155	38	31	0.0
2006	0	162	45	105	0.0
2007	0	171	46	105	0.0
2008	1	182	51	33	0.0
2009	1	171	44	33	0.0
2010	0	161	47	105	0.0
2011	0	156	50	105	0.0
2012	1	158	51	34	0.0

County: county value. Kansas: state value. County Rank: highest county value ranked #1. (\$000): thousands of dollars. Nonmetro Kansas: Kansas total less Metropolitan Areas as defined by the Office of Management and Budget (OMB; released 2/28/2013). Per 1000: For nonmoney amounts, Per 1000=(county value / county population for the same year as the data) x 1000. \$ Per capita=(county value / county population for the same year as the data). Value= . indicates missing or suppressed data or value not calculated.

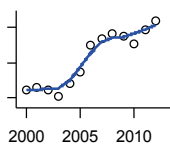
Business

ESTABLISHMENTS: FORESTRY, FISHING, HUNTING, AND AG SUPPORT



U.S. Census Bureau, County Business Patterns

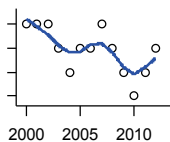
Year	County	State of Kansas	Non Metro Kansas	County Rank	Per 1000 or \$ Per Capita
2000	8	190	.	3	0.3
2001	9	217	.	4	0.3
2002	6	224	.	6	0.2
2003	7	217	.	6	0.3
2004	8	211	.	5	0.3
2005	4	188	.	13	0.1
2006	5	193	.	12	0.2
2007	5	212	167	12	0.2
2008	5	197	155	9	0.2
2009	5	191	152	8	0.2
2010	6	192	158	6	0.2
2011	6	193	155	6	0.2
2012	4	204	161	18	0.1



ESTABLISHMENTS: MINING

U.S. Census Bureau, County Business Patterns

Year	County	State of Kansas	Non Metro Kansas	County Rank	Per 1000 or \$ Per Capita
2000	55	868	.	2	2.0
2001	56	878	.	2	2.0
2002	55	847	.	2	2.0
2003	51	864	.	2	1.8
2004	58	880	.	2	2.1
2005	65	941	.	2	2.4
2006	80	991	.	2	2.9
2007	84	1,000	746	2	3.1
2008	87	1,047	785	2	3.2
2009	85	1,016	759	2	3.1
2010	81	1,009	750	2	2.9
2011	89	1,013	748	2	3.2
2012	94	1,048	772	2	3.4



ESTABLISHMENTS: UTILITIES

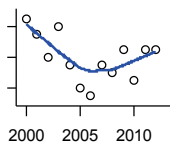
U.S. Census Bureau, County Business Patterns

Year	County	State of Kansas	Non Metro Kansas	County Rank	Per 1000 or \$ Per Capita
2000	7	274	195	4	0.2
2001	7	290	207	8	0.3
2002	7	278	.	8	0.3
2003	6	268	.	9	0.2
2004	5	247	.	13	0.2
2005	6	254	.	9	0.2
2006	6	248	.	9	0.2
2007	7	222	160	5	0.3
2008	6	244	169	7	0.2
2009	5	222	155	10	0.2
2010	4	197	130	12	0.1
2011	5	230	158	11	0.2
2012	6	232	158	6	0.2

County: county value. Kansas: state value. County Rank: highest county value ranked #1. (\$000): thousands of dollars. Nonmetro Kansas: Kansas total less Metropolitan Areas as defined by the Office of Management and Budget (OMB; released 2/28/2013). Per 1000: For nonmoney amounts, Per 1000=(county value / county population for the same year as the data) x 1000. \$ Per capita=(county value / county population for the same year as the data). Value= . indicates missing or suppressed data or value not calculated.

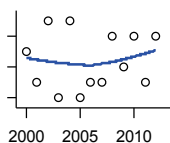
Business

ESTABLISHMENTS: CONSTRUCTION



U.S. Census Bureau, County Business Patterns

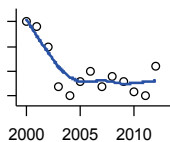
Year	County	State of Kansas	Non Metro Kansas	County Rank	Per 1000 or \$ Per Capita
2000	97	7,703	2,643	15	3.4
2001	95	7,449	2,548	14	3.4
2002	92	7,519	2,486	15	3.3
2003	96	7,722	2,535	15	3.5
2004	91	7,887	2,531	16	3.3
2005	88	8,032	2,534	19	3.2
2006	87	8,031	2,519	17	3.2
2007	91	8,057	2,578	16	3.3
2008	90	7,831	2,553	16	3.3
2009	93	7,342	2,480	15	3.4
2010	89	7,064	2,417	15	3.2
2011	93	6,774	2,377	15	3.4
2012	93	6,741	2,403	15	3.4



ESTABLISHMENTS: MANUFACTURING

U.S. Census Bureau, County Business Patterns

Year	County	State of Kansas	Non Metro Kansas	County Rank	Per 1000 or \$ Per Capita
2000	46	3,229	1,314	14	1.6
2001	44	3,240	1,322	15	1.6
2002	48	3,181	1,290	14	1.7
2003	43	3,159	1,291	15	1.6
2004	48	3,179	1,313	14	1.8
2005	43	3,128	1,276	15	1.6
2006	44	3,165	1,288	15	1.6
2007	44	3,184	1,316	14	1.6
2008	47	3,171	1,294	13	1.7
2009	45	3,026	1,240	13	1.6
2010	47	2,955	1,221	12	1.7
2011	44	2,877	1,193	13	1.6
2012	47	2,889	1,195	12	1.7



ESTABLISHMENTS: WHOLESALE TRADE

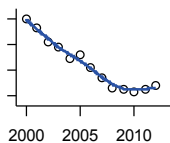
U.S. Census Bureau, County Business Patterns

Year	County	State of Kansas	Non Metro Kansas	County Rank	Per 1000 or \$ Per Capita
2000	80	4,876	1,781	9	2.8
2001	79	4,811	1,775	9	2.8
2002	75	4,719	1,743	9	2.7
2003	67	4,590	1,626	9	2.4
2004	65	4,553	1,627	9	2.4
2005	68	4,541	1,613	9	2.5
2006	70	4,517	1,591	8	2.5
2007	67	4,555	1,619	9	2.4
2008	69	4,501	1,611	9	2.5
2009	68	4,437	1,603	9	2.5
2010	66	4,432	1,598	10	2.4
2011	65	4,400	1,647	10	2.3
2012	71	4,563	1,740	9	2.6

County: county value. Kansas: state value. County Rank: highest county value ranked #1. (\$000): thousands of dollars. Nonmetro Kansas: Kansas total less Metropolitan Areas as defined by the Office of Management and Budget (OMB; released 2/28/2013). Per 1000: For nonmoney amounts, Per 1000=(county value / county population for the same year as the data) x 1000. \$ Per capita=(county value / county population for the same year as the data). Value= . indicates missing or suppressed data or value not calculated.

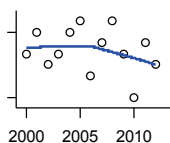
Business

ESTABLISHMENTS: RETAIL TRADE



U.S. Census Bureau, County Business Patterns

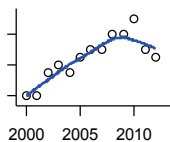
Year	County	State of Kansas	Non Metro Kansas	County Rank	Per 1000 or \$ Per Capita
2000	180	12,261	5,305	15	6.4
2001	173	12,206	5,273	16	6.2
2002	162	11,980	5,148	16	5.9
2003	158	11,834	5,115	17	5.7
2004	149	11,748	5,036	19	5.4
2005	152	11,562	4,903	18	5.5
2006	142	11,367	4,770	19	5.2
2007	134	11,306	4,718	18	4.9
2008	126	10,978	4,556	20	4.6
2009	125	10,760	4,436	19	4.5
2010	123	10,727	4,410	19	4.4
2011	125	10,655	4,359	17	4.5
2012	128	10,585	4,272	17	4.6



ESTABLISHMENTS: TRANSPORTATION & WAREHOUSING

U.S. Census Bureau, County Business Patterns

Year	County	State of Kansas	Non Metro Kansas	County Rank	Per 1000 or \$ Per Capita
2000	40	2,474	1,298	14	1.4
2001	42	2,463	1,303	15	1.5
2002	39	2,461	1,290	13	1.4
2003	40	2,576	1,310	16	1.5
2004	42	2,651	1,340	15	1.5
2005	43	2,632	1,345	13	1.6
2006	38	2,626	1,321	17	1.4
2007	41	2,664	1,334	12	1.5
2008	43	2,675	1,353	13	1.6
2009	40	2,635	1,336	12	1.5
2010	36	2,615	1,335	17	1.3
2011	41	2,579	1,308	12	1.5
2012	39	2,519	1,271	12	1.4



ESTABLISHMENTS: INFORMATION

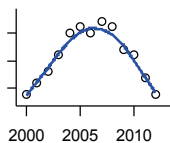
U.S. Census Bureau, County Business Patterns

Year	County	State of Kansas	Non Metro Kansas	County Rank	Per 1000 or \$ Per Capita
2000	10	1,542	587	32	0.4
2001	10	1,556	572	31	0.4
2002	13	1,517	555	22	0.5
2003	14	1,516	566	24	0.5
2004	13	1,518	560	22	0.5
2005	15	1,519	542	19	0.5
2006	16	1,549	563	20	0.6
2007	16	1,504	533	18	0.6
2008	18	1,468	527	14	0.7
2009	18	1,420	515	12	0.7
2010	20	1,437	534	12	0.7
2011	16	1,428	546	18	0.6
2012	15	1,387	522	18	0.5

County: county value. Kansas: state value. County Rank: highest county value ranked #1. (\$000): thousands of dollars. Nonmetro Kansas: Kansas total less Metropolitan Areas as defined by the Office of Management and Budget (OMB; released 2/28/2013). Per 1000: For nonmoney amounts, Per 1000=(county value / county population for the same year as the data) x 1000. \$ Per capita=(county value / county population for the same year as the data). Value= . indicates missing or suppressed data or value not calculated.

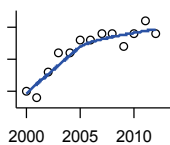
Business

**ESTABLISHMENTS:
FINANCE & INSURANCE**



U.S. Census Bureau, County Business Patterns

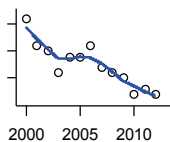
Year	County	State of Kansas	Non Metro Kansas	County Rank	Per 1000 or \$ Per Capita
2000	59	5,209	1,871	15	2.1
2001	61	5,178	1,848	13	2.2
2002	63	5,496	1,929	13	2.3
2003	66	5,569	1,926	13	2.4
2004	70	5,572	1,932	11	2.6
2005	71	5,708	1,983	13	2.6
2006	70	5,877	2,000	12	2.5
2007	72	6,017	2,062	13	2.6
2008	71	6,010	2,059	13	2.6
2009	67	5,933	2,026	14	2.4
2010	66	5,872	2,009	14	2.4
2011	62	5,854	2,018	16	2.2
2012	59	5,993	2,056	16	2.1



**ESTABLISHMENTS: REAL ESTATE,
RENTAL, AND LEASING**

U.S. Census Bureau, County Business Patterns

Year	County	State of Kansas	Non Metro Kansas	County Rank	Per 1000 or \$ Per Capita
2000	20	2,733	.	24	0.7
2001	19	2,849	.	24	0.7
2002	23	2,952	.	21	0.8
2003	26	3,007	.	19	0.9
2004	26	3,108	.	21	0.9
2005	28	3,203	.	20	1.0
2006	28	3,268	.	21	1.0
2007	29	3,286	754	20	1.1
2008	29	3,239	770	20	1.1
2009	27	3,122	754	20	1.0
2010	29	3,050	737	19	1.0
2011	31	3,002	723	17	1.1
2012	29	2,981	723	17	1.1



**ESTABLISHMENTS:
PROFESSIONAL, SCIENTIFIC, AND
TECHNICAL SERVICES**

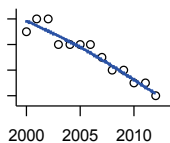
U.S. Census Bureau, County Business Patterns

Year	County	State of Kansas	Non Metro Kansas	County Rank	Per 1000 or \$ Per Capita
2000	71	6,424	1,716	11	2.5
2001	66	6,492	1,694	13	2.4
2002	65	6,719	1,716	13	2.3
2003	61	6,793	1,748	15	2.2
2004	64	7,025	1,742	15	2.3
2005	64	7,087	1,729	14	2.3
2006	66	7,231	1,760	13	2.4
2007	62	7,329	1,761	15	2.3
2008	61	7,133	1,702	15	2.2
2009	60	7,122	1,719	14	2.2
2010	57	7,172	1,719	15	2.1
2011	58	7,115	1,706	15	2.1
2012	57	7,122	1,707	16	2.1

County: county value. Kansas: state value. County Rank: highest county value ranked #1. (\$000): thousands of dollars. Nonmetro Kansas: Kansas total less Metropolitan Areas as defined by the Office of Management and Budget (OMB; released 2/28/2013). Per 1000: For nonmoney amounts, Per 1000=(county value / county population for the same year as the data) x 1000. \$ Per capita=(county value / county population for the same year as the data). Value= . indicates missing or suppressed data or value not calculated.

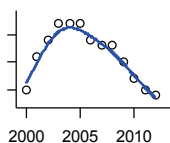
Business

ESTABLISHMENTS: MANAGEMENT OF COMPANIES AND ENTERPRISES



U.S. Census Bureau, County Business Patterns

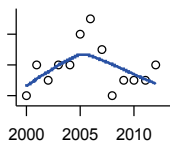
Year	County	State of Kansas	Non Metro Kansas	County Rank	Per 1000 or \$ Per Capita
2000	6	622	.	12	0.2
2001	7	593	.	12	0.3
2002	7	597	.	11	0.3
2003	5	561	.	15	0.2
2004	5	569	.	15	0.2
2005	5	543	.	15	0.2
2006	5	542	.	15	0.2
2007	4	550	140	18	0.1
2008	3	553	150	27	0.1
2009	3	575	149	26	0.1
2010	2	567	144	40	0.1
2011	2	552	147	39	0.1
2012	1	593	147	56	0.0



ESTABLISHMENTS: ADMIN, SUPPORT, WASTE MGMT., AND REMEDIATION

U.S. Census Bureau, County Business Patterns

Year	County	State of Kansas	Non Metro Kansas	County Rank	Per 1000 or \$ Per Capita
2000	30	3,307	903	19	1.1
2001	36	3,421	947	16	1.3
2002	39	3,232	902	13	1.4
2003	42	3,189	877	10	1.5
2004	42	3,301	.	11	1.5
2005	42	3,342	.	12	1.5
2006	39	3,395	909	12	1.4
2007	38	3,522	948	14	1.4
2008	38	3,587	966	17	1.4
2009	35	3,505	927	15	1.3
2010	32	3,494	926	20	1.2
2011	30	3,447	933	21	1.1
2012	29	3,462	925	20	1.1



ESTABLISHMENTS: EDUCATIONAL SERVICES

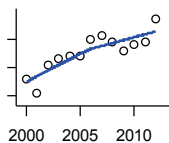
U.S. Census Bureau, County Business Patterns

Year	County	State of Kansas	Non Metro Kansas	County Rank	Per 1000 or \$ Per Capita
2000	4	604	.	25	0.1
2001	6	625	.	18	0.2
2002	5	666	.	21	0.2
2003	6	663	.	20	0.2
2004	6	690	.	20	0.2
2005	8	699	.	15	0.3
2006	9	698	.	14	0.3
2007	7	691	168	16	0.3
2008	4	692	160	28	0.1
2009	5	690	153	22	0.2
2010	5	700	151	20	0.2
2011	5	711	152	21	0.2
2012	6	724	148	19	0.2

County: county value. Kansas: state value. County Rank: highest county value ranked #1. (\$000): thousands of dollars. Nonmetro Kansas: Kansas total less Metropolitan Areas as defined by the Office of Management and Budget (OMB; released 2/28/2013). Per 1000: For nonmoney amounts, Per 1000=(county value / county population for the same year as the data) x 1000. \$ Per capita=(county value / county population for the same year as the data). Value= . indicates missing or suppressed data or value not calculated.

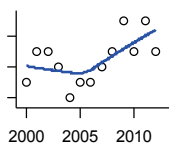
Business

ESTABLISHMENTS: HEALTH CARE AND SOCIAL ASSISTANCE



U.S. Census Bureau, County Business Patterns

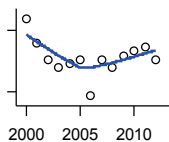
Year	County	State of Kansas	Non Metro Kansas	County Rank	Per 1000 or \$ Per Capita
2000	91	6,564	2,619	16	3.2
2001	86	6,636	2,618	16	3.1
2002	96	7,052	2,804	16	3.5
2003	98	7,129	2,817	16	3.6
2004	99	7,239	2,837	16	3.6
2005	99	7,412	2,877	16	3.6
2006	105	7,477	2,880	15	3.8
2007	106	7,661	2,894	15	3.9
2008	104	7,651	2,839	17	3.8
2009	101	7,696	2,814	17	3.7
2010	103	7,751	2,857	17	3.7
2011	104	7,804	2,847	15	3.8
2012	112	7,973	2,824	15	4.1



ESTABLISHMENTS: ARTS, ENTERTAINMENT, AND RECREATION

U.S. Census Bureau, County Business Patterns

Year	County	State of Kansas	Non Metro Kansas	County Rank	Per 1000 or \$ Per Capita
2000	11	981	423	18	0.4
2001	13	1,009	437	14	0.5
2002	13	1,054	445	17	0.5
2003	12	1,045	448	19	0.4
2004	10	1,082	449	23	0.4
2005	11	1,109	448	21	0.4
2006	11	1,080	449	21	0.4
2007	12	1,092	448	18	0.4
2008	13	1,062	426	14	0.5
2009	15	1,063	424	13	0.5
2010	13	1,018	411	15	0.5
2011	15	997	395	12	0.5
2012	13	1,000	395	13	0.5



ESTABLISHMENTS: ACCOMMODATION AND FOOD SERVICES

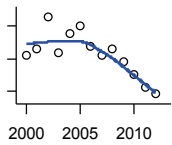
U.S. Census Bureau, County Business Patterns

Year	County	State of Kansas	Non Metro Kansas	County Rank	Per 1000 or \$ Per Capita
2000	73	5,536	2,259	15	2.6
2001	67	5,551	2,222	18	2.4
2002	63	5,610	2,229	19	2.3
2003	61	5,635	2,241	20	2.2
2004	62	5,681	2,214	20	2.3
2005	63	5,776	2,224	20	2.3
2006	54	5,745	2,186	23	2.0
2007	63	5,877	2,155	21	2.3
2008	61	5,843	2,114	21	2.2
2009	64	5,794	2,093	19	2.3
2010	65	5,898	2,108	20	2.3
2011	66	5,958	2,131	19	2.4
2012	63	5,951	2,116	19	2.3

County: county value. Kansas: state value. County Rank: highest county value ranked #1. (\$000): thousands of dollars. Nonmetro Kansas: Kansas total less Metropolitan Areas as defined by the Office of Management and Budget (OMB; released 2/28/2013). Per 1000: For nonmoney amounts, Per 1000=(county value / county population for the same year as the data) x 1000. \$ Per capita=(county value / county population for the same year as the data). Value= . indicates missing or suppressed data or value not calculated.

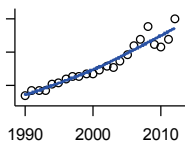
Business

ESTABLISHMENTS: OTHER SERVICES



U.S. Census Bureau, County Business Patterns

Year	County	State of Kansas	Non Metro Kansas	County Rank	Per 1000 or \$ Per Capita
2000	121	8,423	3,700	15	4.3
2001	123	8,310	3,672	15	4.4
2002	133	8,552	3,706	12	4.8
2003	122	8,411	3,651	14	4.4
2004	128	8,343	3,644	13	4.7
2005	130	8,321	3,616	12	4.7
2006	124	8,225	3,534	13	4.5
2007	121	8,355	3,584	13	4.4
2008	123	8,104	3,450	12	4.5
2009	119	8,040	3,452	14	4.3
2010	115	7,998	3,428	14	4.2
2011	111	7,883	3,342	13	4.0
2012	109	7,913	3,349	14	4.0



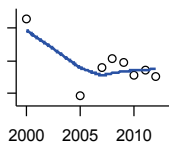
TOTAL ANNUAL PAYROLL (\$000) COUNTY BUSINESS PATTERNS

U.S. Census Bureau, County Business Patterns

Year	County	State of Kansas	Non Metro Kansas	County Rank	Per 1000 or \$ Per Capita
1990	167,534	17,487,315	4,503,686	18	5,701.9
1991	185,803	18,162,326	4,675,388	16	6,331.9
1992	184,251	19,244,346	4,958,980	18	6,227.6
1993	186,267	20,087,190	5,264,730	19	6,327.9
1994	202,311	21,201,652	5,625,804	18	6,890.0
1995	208,034	22,825,919	5,960,881	18	7,141.1
1996	220,286	24,613,884	6,292,593	18	7,618.4
1997	224,796	26,787,098	6,698,110	19	7,765.0
1998	227,968	28,747,577	6,972,783	20	7,918.3
1999	233,537	30,600,434	7,227,524	20	8,194.0
2000	236,187	31,990,762	7,644,608	21	8,373.9
2001	247,369	33,303,991	7,726,357	20	8,907.5
2002	256,353	33,152,962	7,641,537	20	9,260.0
2003	251,829	34,040,946	7,801,879	20	9,130.5
2004	273,376	35,725,813	8,401,595	20	9,980.9
2005	293,781	36,646,065	8,689,984	19	10,669.0
2006	319,516	39,251,387	9,298,539	19	11,635.7
2007	338,762	42,022,753	.	20	12,322.2
2008	378,280	43,984,689	.	18	13,849.3
2009	322,893	42,146,866	.	20	11,730.5
2010	313,465	42,686,303	10,452,586	21	11,327.1
2011	336,564	43,733,944	.	19	12,146.4
2012	400,123	45,608,072	11,384,354	18	14,509.3

County: county value. Kansas: state value. County Rank: highest county value ranked #1. (\$000): thousands of dollars. Nonmetro Kansas: Kansas total less Metropolitan Areas as defined by the Office of Management and Budget (OMB; released 2/28/2013). Per 1000: For nonmoney amounts, Per 1000=(county value / county population for the same year as the data) x 1000. \$ Per capita=(county value / county population for the same year as the data). Value= . indicates missing or suppressed data or value not calculated.

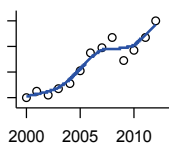
Business



TOTAL ANNUAL PAYROLL(\$000):
FORESTRY, FISHING, HUNTING, AND
AG SUPPORT

U.S. Census Bureau, County Business
Patterns

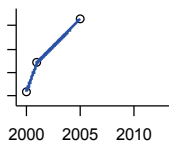
Year	County	State of Kansas	Non Metro Kansas	County Rank	Per 1000 or \$ Per Capita
2000	529	13,551	.	.	18.8
2001
2002	.	16,528	.	.	.
2003	.	17,247	.	.	.
2004	.	17,552	.	.	.
2005	290	16,298	.	.	10.5
2006	.	17,908	.	.	.
2007	378	22,199	.	.	13.7
2008	407	21,359	.	.	14.9
2009	393	22,466	.	.	14.3
2010	356	22,753	.	.	12.9
2011	369	23,320	.	.	13.3
2012	351	27,492	.	.	12.7



TOTAL ANNUAL PAYROLL(\$000):
MINING

U.S. Census Bureau, County Business
Patterns

Year	County	State of Kansas	Non Metro Kansas	County Rank	Per 1000 or \$ Per Capita
2000	10,216	240,079	.	.	362.2
2001	12,898	273,838	.	.	464.4
2002	10,973	262,277	.	.	396.4
2003	13,522	290,652	.	.	490.3
2004	15,636	326,997	.	.	570.9
2005	20,681	381,069	.	.	751.1
2006	27,402	482,102	.	.	997.9
2007	29,666	551,751	.	.	1,079.1
2008	33,686	620,446	.	.	1,233.3
2009	24,746	465,070	.	.	899.0
2010	28,559	485,841	.	.	1,032.0
2011	33,317	541,536	.	.	1,202.4
2012	40,041	600,402	.	.	1,452.0



TOTAL ANNUAL PAYROLL(\$000):
UTILITIES

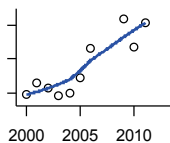
U.S. Census Bureau, County Business
Patterns

Year	County	State of Kansas	Non Metro Kansas	County Rank	Per 1000 or \$ Per Capita
2000	6,087	410,313	.	.	215.8
2001	6,706	452,057	.	.	241.5
2002	.	377,559	.	.	.
2003	.	378,157	.	.	.
2004	.	377,809	.	.	.
2005	7,647	429,864	.	.	277.7
2006	.	443,999	.	.	.
2007	.	480,068	.	.	.
2008	.	541,066	.	.	.
2009	.	563,373	.	.	.
2010	.	512,628	.	.	.
2011	.	653,229	.	.	.
2012	.	625,451	.	.	.

County: county value. Kansas: state value. County Rank: highest county value ranked #1. (\$000): thousands of dollars. Nonmetro Kansas: Kansas total less Metropolitan Areas as defined by the Office of Management and Budget (OMB; released 2/28/2013). Per 1000: For nonmoney amounts, Per 1000=(county value / county population for the same year as the data) x 1000. \$ Per capita=(county value / county population for the same year as the data). Value= . indicates missing or suppressed data or value not calculated.

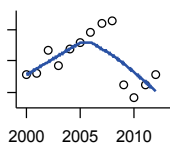
Business

**TOTAL ANNUAL PAYROLL(\$000):
CONSTRUCTION**



U.S. Census Bureau, County Business Patterns

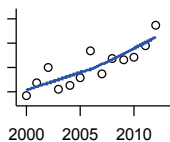
Year	County	State of Kansas	Non Metro Kansas	County Rank	Per 1000 or \$ Per Capita
2000	29,509	2,256,057	.	.	1,046.2
2001	32,977	2,320,652	.	.	1,187.5
2002	31,490	2,302,229	.	.	1,137.5
2003	28,960	2,282,021	.	.	1,050.0
2004	29,865	2,302,854	.	.	1,090.4
2005	34,325	2,465,977	.	.	1,246.5
2006	43,171	2,700,351	.	.	1,572.1
2007	.	2,772,168	.	.	.
2008	.	2,950,073	.	.	.
2009	52,067	2,709,864	.	.	1,891.6
2010	43,457	2,553,555	.	.	1,570.3
2011	51,052	2,550,355	.	.	1,842.4
2012	.	2,733,284	.	.	.



**TOTAL ANNUAL PAYROLL(\$000):
MANUFACTURING**

U.S. Census Bureau, County Business Patterns

Year	County	State of Kansas	Non Metro Kansas	County Rank	Per 1000 or \$ Per Capita
2000	40,813	7,015,414	.	.	1,447.0
2001	41,026	7,301,706	.	.	1,477.3
2002	48,197	6,802,605	.	.	1,741.0
2003	43,389	6,691,611	.	.	1,573.1
2004	48,894	6,985,656	.	.	1,785.1
2005	50,702	7,221,614	.	.	1,841.3
2006	54,089	7,621,873	.	.	1,969.7
2007	56,860	7,873,359	.	.	2,068.2
2008	57,697	8,441,541	.	.	2,112.4
2009	37,390	7,477,838	.	.	1,358.4
2010	33,157	7,556,955	.	.	1,198.1
2011	37,289	7,747,934	.	.	1,345.7
2012	40,483	7,704,851	.	.	1,468.0



**TOTAL ANNUAL PAYROLL(\$000):
WHOLESALE TRADE**

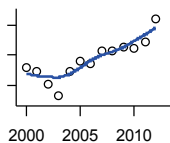
U.S. Census Bureau, County Business Patterns

Year	County	State of Kansas	Non Metro Kansas	County Rank	Per 1000 or \$ Per Capita
2000	19,069	2,332,755	.	.	676.1
2001	21,700	2,283,169	.	.	781.4
2002	25,071	2,107,653	.	.	905.6
2003	20,546	2,622,701	.	.	744.9
2004	21,340	2,663,196	.	.	779.1
2005	22,864	2,345,990	.	.	830.3
2006	28,299	2,592,211	.	.	1,030.6
2007	23,698	2,682,542	.	.	862.0
2008	26,763	3,078,655	.	.	979.8
2009	26,565	2,940,949	.	.	965.1
2010	27,069	3,097,628	.	.	978.1
2011	29,489	3,305,811	.	.	1,064.2
2012	33,774	3,339,997	.	.	1,224.7

County: county value. Kansas: state value. County Rank: highest county value ranked #1. (\$000): thousands of dollars. Nonmetro Kansas: Kansas total less Metropolitan Areas as defined by the Office of Management and Budget (OMB; released 2/28/2013). Per 1000: For nonmoney amounts, Per 1000=(county value / county population for the same year as the data) x 1000. \$ Per capita=(county value / county population for the same year as the data). Value= . indicates missing or suppressed data or value not calculated.

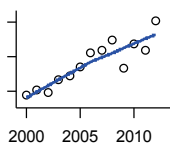
Business

**TOTAL ANNUAL PAYROLL(\$000):
RETAIL TRADE**



U.S. Census Bureau, County Business Patterns

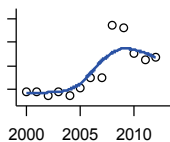
Year	County	State of Kansas	Non Metro Kansas	County Rank	Per 1000 or \$ Per Capita
2000	32,411	2,747,001	.	.	1,149.1
2001	31,800	2,813,226	.	.	1,145.1
2002	30,199	2,854,231	.	.	1,090.8
2003	28,612	2,773,674	.	.	1,037.4
2004	31,818	2,847,826	.	.	1,161.7
2005	33,262	2,952,196	.	.	1,207.9
2006	32,916	3,126,495	.	.	1,198.7
2007	34,626	3,201,169	.	.	1,259.5
2008	34,582	3,261,054	.	.	1,266.1
2009	35,017	3,232,246	.	.	1,272.1
2010	34,927	3,321,838	.	.	1,262.1
2011	35,828	3,384,607	.	.	1,293.0
2012	38,797	3,409,755	.	.	1,406.9



**TOTAL ANNUAL PAYROLL(\$000):
TRANSPORTATION &
WAREHOUSING**

U.S. Census Bureau, County Business Patterns

Year	County	State of Kansas	Non Metro Kansas	County Rank	Per 1000 or \$ Per Capita
2000	7,561	1,044,835	.	.	268.1
2001	8,112	1,089,405	.	.	292.1
2002	7,818	1,094,636	.	.	282.4
2003	9,297	1,316,655	.	.	337.1
2004	9,801	1,439,800	.	.	357.8
2005	10,880	1,393,651	.	.	395.1
2006	12,534	1,528,551	.	.	456.4
2007	12,765	1,788,267	.	.	464.3
2008	13,882	1,722,697	.	.	508.2
2009	10,621	1,618,598	.	.	385.9
2010	13,434	1,735,761	.	.	485.4
2011	12,699	1,739,165	.	.	458.3
2012	16,178	1,984,976	.	.	586.6



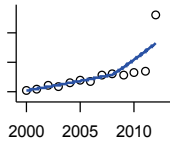
**TOTAL ANNUAL PAYROLL(\$000):
INFORMATION**

U.S. Census Bureau, County Business Patterns

Year	County	State of Kansas	Non Metro Kansas	County Rank	Per 1000 or \$ Per Capita
2000	2,918	1,923,381	.	.	103.5
2001	2,918	2,218,610	.	.	105.1
2002	2,716	2,298,108	.	.	98.1
2003	2,908	2,378,673	.	.	105.4
2004	2,710	2,392,990	.	.	98.9
2005	3,084	2,395,081	.	.	112.0
2006	3,519	2,586,483	.	.	128.2
2007	3,479	2,594,138	.	.	126.5
2008	5,742	3,043,244	.	.	210.2
2009	5,598	3,045,570	.	.	203.4
2010	4,506	2,481,580	.	.	162.8
2011	4,272	2,513,805	.	.	154.2
2012	4,338	2,535,555	.	.	157.3

County: county value. Kansas: state value. County Rank: highest county value ranked #1. (\$000): thousands of dollars. Nonmetro Kansas: Kansas total less Metropolitan Areas as defined by the Office of Management and Budget (OMB; released 2/28/2013). Per 1000: For nonmoney amounts, Per 1000=(county value / county population for the same year as the data) x 1000. \$ Per capita=(county value / county population for the same year as the data). Value= . indicates missing or suppressed data or value not calculated.

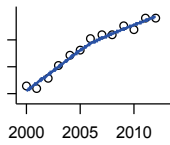
Business



TOTAL ANNUAL PAYROLL(\$000):
FINANCE & INSURANCE

U.S. Census Bureau, County Business Patterns

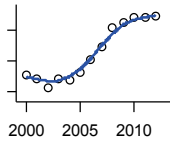
Year	County	State of Kansas	Non Metro Kansas	County Rank	Per 1000 or \$ Per Capita
2000	10,647	2,083,565	.	.	377.5
2001	10,983	2,129,587	.	.	395.5
2002	12,349	2,414,120	.	.	446.1
2003	11,801	2,608,579	.	.	427.9
2004	13,298	2,676,910	.	.	485.5
2005	14,141	2,786,136	.	.	513.5
2006	13,736	2,928,931	.	.	500.2
2007	15,719	3,096,017	.	.	571.8
2008	16,176	3,322,977	.	.	592.2
2009	15,872	3,206,839	.	.	576.6
2010	16,606	3,211,300	.	.	600.1
2011	16,992	3,404,633	.	.	613.2
2012	36,304	3,611,165	.	.	1,316.5



TOTAL ANNUAL PAYROLL(\$000):
REAL ESTATE, RENTAL, AND LEASING

U.S. Census Bureau, County Business Patterns

Year	County	State of Kansas	Non Metro Kansas	County Rank	Per 1000 or \$ Per Capita
2000	1,297	360,637	.	.	46.0
2001	1,186	397,371	.	.	42.7
2002	1,568	403,695	.	.	56.6
2003	2,057	437,786	.	.	74.6
2004	2,437	430,719	.	.	89.0
2005	2,609	465,149	.	.	94.7
2006	3,044	478,811	.	.	110.9
2007	3,160	452,969	.	.	114.9
2008	3,157	484,149	.	.	115.6
2009	3,506	450,884	.	.	127.4
2010	3,351	487,255	.	.	121.1
2011	3,784	535,120	.	.	136.6
2012	3,771	531,039	.	.	136.7



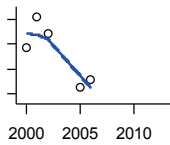
TOTAL ANNUAL PAYROLL(\$000):
PROFESSIONAL, SCIENTIFIC, AND TECHNICAL SERVICES

U.S. Census Bureau, County Business Patterns

Year	County	State of Kansas	Non Metro Kansas	County Rank	Per 1000 or \$ Per Capita
2000	10,127	2,057,313	.	.	359.0
2001	9,837	2,152,937	.	.	354.2
2002	9,299	2,150,085	.	.	335.9
2003	9,877	2,052,712	.	.	358.1
2004	9,775	2,531,457	.	.	356.9
2005	10,253	2,418,500	.	.	372.3
2006	11,103	2,655,690	.	.	404.3
2007	11,889	2,901,544	.	.	432.5
2008	13,185	2,903,802	.	.	482.7
2009	13,482	3,071,611	.	.	489.8
2010	13,815	3,037,182	.	.	499.2
2011	13,835	3,132,082	.	.	499.3
2012	13,911	3,455,548	.	.	504.4

County: county value. Kansas: state value. County Rank: highest county value ranked #1. (\$000): thousands of dollars. Nonmetro Kansas: Kansas total less Metropolitan Areas as defined by the Office of Management and Budget (OMB; released 2/28/2013). Per 1000: For nonmoney amounts, Per 1000=(county value / county population for the same year as the data) x 1000. \$ Per capita=(county value / county population for the same year as the data). Value= . indicates missing or suppressed data or value not calculated.

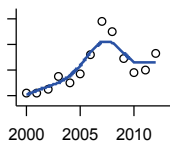
Business



**TOTAL ANNUAL PAYROLL(\$000):
MANAGEMENT OF COMPANIES AND
ENTERPRISES**

U.S. Census Bureau, County Business Patterns

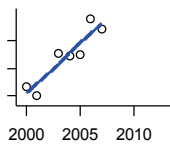
Year	County	State of Kansas	Non Metro Kansas	County Rank	Per 1000 or \$ Per Capita
2000	1,422	1,362,735	.	.	50.4
2001	2,053	1,279,253	.	.	73.9
2002	1,713	1,311,368	.	.	61.9
2003	.	1,352,119	.	.	.
2004	.	1,378,891	.	.	.
2005	650	1,510,876	.	.	23.6
2006	792	1,626,320	.	.	28.8
2007	.	2,233,654	.	.	.
2008	.	1,848,656	.	.	.
2009	.	1,601,158	.	.	.
2010	.	2,003,048	.	.	.
2011	.	1,677,619	.	.	.
2012	.	1,834,430	.	.	.



**TOTAL ANNUAL PAYROLL(\$000):
ADMIN, SUPPORT, WASTE MGMT.,
AND REMEDIATION**

U.S. Census Bureau, County Business Patterns

Year	County	State of Kansas	Non Metro Kansas	County Rank	Per 1000 or \$ Per Capita
2000	3,267	1,388,712	.	.	115.8
2001	3,251	1,416,480	.	.	117.1
2002	3,525	1,378,905	.	.	127.3
2003	4,537	1,387,061	.	.	164.5
2004	4,067	1,544,442	.	.	148.5
2005	4,755	1,694,687	.	.	172.7
2006	6,218	1,800,846	.	.	226.4
2007	8,757	1,978,025	.	.	318.5
2008	7,966	2,096,864	.	.	291.6
2009	5,896	1,832,540	.	.	214.2
2010	4,826	2,117,325	.	.	174.4
2011	5,033	2,114,970	.	.	181.6
2012	6,328	2,230,250	.	.	229.5



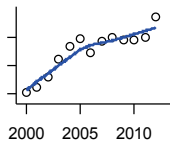
**TOTAL ANNUAL PAYROLL(\$000):
EDUCATIONAL SERVICES**

U.S. Census Bureau, County Business Patterns

Year	County	State of Kansas	Non Metro Kansas	County Rank	Per 1000 or \$ Per Capita
2000	665	299,843	.	.	23.6
2001	607	320,606	.	.	21.9
2002	.	353,531	.	.	.
2003	909	350,814	.	.	33.0
2004	893	361,644	.	.	32.6
2005	898	375,781	.	.	32.6
2006	1,160	400,565	.	.	42.2
2007	1,089	414,233	.	.	39.6
2008	.	463,210	.	.	.
2009	.	468,856	.	.	.
2010	.	487,670	.	.	.
2011	.	504,964	.	.	.
2012	.	508,448	.	.	.

County: county value. Kansas: state value. County Rank: highest county value ranked #1. (\$000): thousands of dollars. Nonmetro Kansas: Kansas total less Metropolitan Areas as defined by the Office of Management and Budget (OMB; released 2/28/2013). Per 1000: For nonmoney amounts, Per 1000=(county value / county population for the same year as the data) x 1000. \$ Per capita=(county value / county population for the same year as the data). Value= . indicates missing or suppressed data or value not calculated.

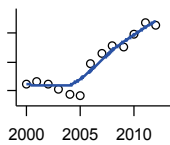
Business



TOTAL ANNUAL PAYROLL(\$000):
HEALTH CARE AND SOCIAL
ASSISTANCE

U.S. Census Bureau, County Business
Patterns

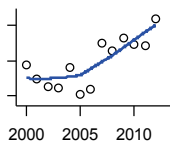
Year	County	State of Kansas	Non Metro Kansas	County Rank	Per 1000 or \$ Per Capita
2000	40,758	4,120,595	.	.	1,445.1
2001	42,381	4,445,027	.	.	1,526.1
2002	46,193	4,705,220	.	.	1,668.6
2003	52,408	4,939,323	.	.	1,900.1
2004	56,891	5,232,394	.	.	2,077.1
2005	59,660	5,487,089	.	.	2,166.6
2006	54,636	5,814,218	.	.	1,989.7
2007	58,530	6,186,471	.	.	2,129.0
2008	60,196	6,490,627	.	.	2,203.9
2009	59,060	6,749,962	.	.	2,145.6
2010	59,023	6,871,727	.	.	2,132.8
2011	59,878	7,129,655	.	.	2,161.0
2012	67,345	7,614,853	.	.	2,442.1



TOTAL ANNUAL PAYROLL(\$000):
ARTS, ENTERTAINMENT, AND
RECREATION

U.S. Census Bureau, County Business
Patterns

Year	County	State of Kansas	Non Metro Kansas	County Rank	Per 1000 or \$ Per Capita
2000	1,111	195,784	.	.	39.4
2001	1,167	203,511	.	.	42.0
2002	1,122	206,204	.	.	40.5
2003	1,020	185,049	.	.	37.0
2004	942	190,742	.	.	34.4
2005	912	196,594	.	.	33.1
2006	1,470	201,049	.	.	53.5
2007	1,651	220,435	.	.	60.1
2008	1,777	236,986	.	.	65.1
2009	1,766	237,116	.	.	64.2
2010	1,989	233,285	.	.	71.9
2011	2,191	234,351	.	.	79.1
2012	2,140	254,169	.	.	77.6



TOTAL ANNUAL PAYROLL(\$000):
ACCOMMODATION AND FOOD
SERVICES

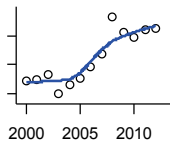
U.S. Census Bureau, County Business
Patterns

Year	County	State of Kansas	Non Metro Kansas	County Rank	Per 1000 or \$ Per Capita
2000	8,725	926,831	.	.	309.3
2001	7,953	960,196	.	.	286.4
2002	7,533	930,510	.	.	272.1
2003	7,479	992,313	.	.	271.2
2004	8,601	1,046,901	.	.	314.0
2005	7,080	1,101,854	.	.	257.1
2006	7,366	1,185,280	.	.	268.2
2007	9,942	1,431,100	.	.	361.6
2008	9,525	1,271,594	.	.	348.7
2009	10,241	1,283,065	.	.	372.0
2010	9,888	1,296,556	.	.	357.3
2011	9,859	1,364,281	.	.	355.8
2012	11,346	1,388,337	.	.	411.4

County: county value. Kansas: state value. County Rank: highest county value ranked #1. (\$000): thousands of dollars. Nonmetro Kansas: Kansas total less Metropolitan Areas as defined by the Office of Management and Budget (OMB; released 2/28/2013). Per 1000: For nonmoney amounts, Per 1000=(county value / county population for the same year as the data) x 1000. \$ Per capita=(county value / county population for the same year as the data). Value= . indicates missing or suppressed data or value not calculated.

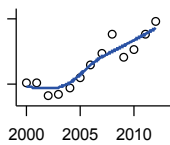
Business

**TOTAL ANNUAL PAYROLL(\$000):
OTHER SERVICES**



U.S. Census Bureau, County Business Patterns

Year	County	State of Kansas	Non Metro Kansas	County Rank	Per 1000 or \$ Per Capita
2000	8,868	965,540	.	.	314.4
2001	8,992	996,716	.	.	323.8
2002	9,376	1,007,464	.	.	338.7
2003	8,020	979,466	.	.	290.8
2004	8,642	970,383	.	.	315.5
2005	9,076	1,005,537	.	.	329.6
2006	9,897	1,055,932	.	.	360.4
2007	10,769	1,141,551	.	.	391.7
2008	13,273	1,184,016	.	.	485.9
2009	12,238	1,167,154	.	.	444.6
2010	11,876	1,170,201	.	.	429.1
2011	12,422	1,173,775	.	.	448.3
2012	12,471	1,217,210	.	.	452.2



**NOMINAL TAXABLE RETAIL SALES
(million\$)**

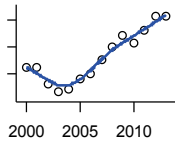
Kansas Department of Revenue

Year	County	State of Kansas	Non Metro Kansas	County Rank	Per 1000 or \$ Per Capita
2000	350.9	30,119.0	9,011.1	15	12.4
2001	350.9	30,202.2	8,874.9	15	12.6
2002	321.5	29,380.8	8,413.5	16	11.6
2003	325.9	30,694.0	8,899.5	17	11.8
2004	341.5	31,922.6	9,275.5	16	12.5
2005	364.4	32,924.2	9,599.7	16	13.2
2006	394.5	34,937.6	10,320.7	15	14.4
2007	420.3	36,180.1	10,848.0	14	15.3
2008	464.8	37,559.5	11,439.6	13	17.0
2009	411.5	35,211.8	10,669.3	14	14.9
2010	428.3	35,655.7	10,946.7	14	15.5
2011	464.1	37,257.0	11,485.4	14	16.7
2012	494.0	38,988.8	12,091.3	14	17.9

County: county value. Kansas: state value. County Rank: highest county value ranked #1. (\$000): thousands of dollars. Nonmetro Kansas: Kansas total less Metropolitan Areas as defined by the Office of Management and Budget (OMB; released 2/28/2013). Per 1000: For nonmoney amounts, Per 1000=(county value / county population for the same year as the data) x 1000. \$ Per capita=(county value / county population for the same year as the data). Value= . indicates missing or suppressed data or value not calculated.

Business

RETAIL PULL FACTOR

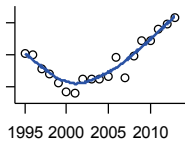


Kansas Direct Program, Kansas State University Cooperative Extension Service (1980-1999); Kansas Department of Revenue (2000-)

Year	County	State of Kansas	Non Metro Kansas	County Rank	Per 1000 or \$ Per Capita
2000	1.12	.	.	10	.
2001	1.12	.	.	10	.
2002	1.06	.	.	11	.
2003	1.03	.	.	13	.
2004	1.04	.	.	12	.
2005	1.08	.	.	12	.
2006	1.10	.	.	12	.
2007	1.15	.	.	10	.
2008	1.20	.	.	10	.
2009	1.24	.	.	9	.
2010	1.21	.	.	10	.
2011	1.26	.	.	10	.
2012	1.31	.	.	9	.
2013	1.31	.	.	10	.

Employment

CIVILIAN LABOR FORCE (BLS-Place of Residence; 1990-)



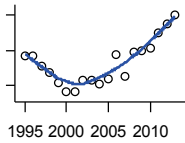
U.S. Department of Labor, Bureau of Labor Statistics (BLS)

Year	County	State of Kansas	Non Metro Kansas	County Rank	Per 1000 or \$ Per Capita
1995	15,523	1,355,850	499,536	20	532.9
1996	15,468	1,371,948	499,930	20	534.9
1997	15,055	1,383,486	495,515	20	520.0
1998	14,889	1,401,588	494,797	20	517.2
1999	14,598	1,409,556	495,186	20	512.2
2000	14,302	1,405,104	490,177	21	507.1
2001	14,265	1,408,103	485,465	21	513.7
2002	14,725	1,424,054	490,819	21	531.9
2003	14,725	1,445,385	512,150	21	533.9
2004	14,711	1,462,277	502,588	21	537.1
2005	14,784	1,465,098	498,970	21	536.9
2006	15,418	1,468,402	505,819	21	561.5
2007	14,758	1,471,969	500,210	21	536.8
2008	15,440	1,480,663	509,053	21	565.3
2009	15,928	1,507,814	523,935	21	578.7
2010	15,943	1,503,659	522,610	21	576.1
2011	16,270	1,497,028	524,656	21	587.2
2012	16,440	1,486,600	520,641	21	596.1
2013	16,638	1,483,720	520,270	19	604.8

County: county value. Kansas: state value. County Rank: highest county value ranked #1. (\$000): thousands of dollars. Nonmetro Kansas: Kansas total less Metropolitan Areas as defined by the Office of Management and Budget (OMB; released 2/28/2013). Per 1000: For nonmoney amounts, Per 1000=(county value / county population for the same year as the data) x 1000. \$ Per capita=(county value / county population for the same year as the data). Value= . indicates missing or suppressed data or value not calculated.

Employment

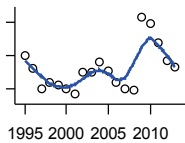
EMPLOYED (BLS-Place of Residence; 1990-)



U.S. Department of Labor, Bureau of Labor Statistics (BLS)

Year	County	State of Kansas	Non Metro Kansas	County Rank	Per 1000 or \$ Per Capita
1995	14,825	1,296,202	478,550	20	508.9
1996	14,843	1,311,843	478,278	20	513.3
1997	14,558	1,329,797	476,164	20	502.9
1998	14,353	1,348,793	476,050	20	498.5
1999	14,078	1,359,908	477,907	20	493.9
2000	13,806	1,351,988	472,391	21	489.5
2001	13,801	1,347,715	464,664	21	497.0
2002	14,130	1,350,960	468,889	21	510.4
2003	14,130	1,364,787	482,716	21	512.3
2004	14,048	1,381,343	477,773	21	512.9
2005	14,181	1,390,292	475,952	21	515.0
2006	14,883	1,403,938	486,004	21	542.0
2007	14,259	1,411,384	481,592	21	518.7
2008	14,951	1,415,541	489,092	21	547.4
2009	14,996	1,400,123	491,651	20	544.8
2010	15,049	1,397,294	490,374	21	543.8
2011	15,490	1,399,282	494,730	21	559.0
2012	15,769	1,400,635	493,961	20	571.8
2013	16,012	1,403,276	494,907	19	582.1

UNEMPLOYED (BLS-Place of Residence; 1990-)



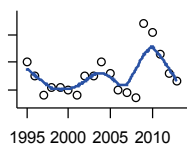
U.S. Department of Labor, Bureau of Labor Statistics (BLS)

Year	County	State of Kansas	Non Metro Kansas	County Rank	Per 1000 or \$ Per Capita
1995	698	59,648	20,986	18	24.0
1996	625	60,105	21,652	21	21.6
1997	497	53,689	19,351	24	17.2
1998	536	52,795	18,747	21	18.6
1999	520	49,648	17,279	20	18.2
2000	496	53,116	17,786	23	17.6
2001	464	60,388	20,801	25	16.7
2002	595	73,094	21,930	23	21.5
2003	595	80,598	29,434	23	21.6
2004	663	80,934	24,815	24	24.2
2005	603	74,806	23,018	25	21.9
2006	535	64,464	19,815	25	19.5
2007	499	60,585	18,618	25	18.2
2008	489	65,122	19,961	26	17.9
2009	932	107,691	32,284	22	33.9
2010	894	106,365	32,236	23	32.3
2011	780	97,746	29,926	24	28.1
2012	671	85,965	26,680	25	24.3
2013	626	80,444	25,363	27	22.8

County: county value. Kansas: state value. County Rank: highest county value ranked #1. (\$000): thousands of dollars. Nonmetro Kansas: Kansas total less Metropolitan Areas as defined by the Office of Management and Budget (OMB; released 2/28/2013). Per 1000: For nonmoney amounts, Per 1000=(county value / county population for the same year as the data) x 1000. \$ Per capita=(county value / county population for the same year as the data). Value= . indicates missing or suppressed data or value not calculated.

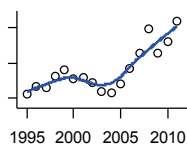
Employment

UNEMPLOYMENT RATE (BLS-Place of Residence; 1990-)



U.S. Department of Labor, Bureau of Labor Statistics (BLS)

Year	County	State of Kansas	Non Metro Kansas	County Rank	Per 1000 or \$ Per Capita
1995	4.5	4.4	4.2	35	.
1996	4.0	4.4	4.3	44	.
1997	3.3	3.9	3.9	55	.
1998	3.6	3.8	3.8	41	.
1999	3.6	3.5	3.5	33	.
2000	3.5	3.8	3.6	45	.
2001	3.3	4.3	4.3	76	.
2002	4.0	5.1	4.5	51	.
2003	4.0	5.6	5.7	51	.
2004	4.5	5.5	4.9	54	.
2005	4.1	5.1	4.6	57	.
2006	3.5	4.4	3.9	61	.
2007	3.4	4.1	3.7	60	.
2008	3.2	4.4	3.9	76	.
2009	5.9	7.1	6.2	44	.
2010	5.6	7.1	6.2	46	.
2011	4.8	6.5	5.7	55	.
2012	4.1	5.8	5.1	63	.
2013	3.8	5.4	4.9	68	.



BEA EMPLOYMENT: TOTAL (Place of Work)

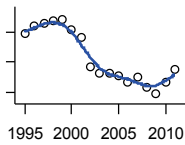
U.S. Bureau of Economic Analysis, Regional Economic Information System (REIS)

Year	County	State of Kansas	Non Metro Kansas	County Rank	Per 1000 or \$ Per Capita
1995	19,129	1,609,299	599,925	19	656.6
1996	19,348	1,641,790	606,318	18	669.1
1997	19,283	1,686,365	615,498	20	666.1
1998	19,608	1,734,451	625,442	21	681.1
1999	19,810	1,752,414	627,143	21	695.1
2000	19,555	1,771,218	628,316	21	693.3
2001	19,596	1,770,708	614,886	21	705.6
2002	19,438	1,748,438	607,560	21	702.1
2003	19,180	1,737,128	602,495	21	695.4
2004	19,174	1,746,540	601,728	21	700.0
2005	19,421	1,760,747	600,588	21	705.3
2006	19,830	1,794,329	610,193	21	722.1
2007	20,263	1,844,083	623,570	21	737.1
2008	20,948	1,860,119	627,525	19	766.9
2009	20,258	1,816,952	616,671	18	736.0
2010	20,596	1,806,793	620,846	18	744.2
2011	21,170	1,825,355	627,641	17	764.0

County: county value. Kansas: state value. County Rank: highest county value ranked #1. (\$000): thousands of dollars. Nonmetro Kansas: Kansas total less Metropolitan Areas as defined by the Office of Management and Budget (OMB; released 2/28/2013). Per 1000: For nonmoney amounts, Per 1000=(county value / county population for the same year as the data) x 1000. \$ Per capita=(county value / county population for the same year as the data). Value= . indicates missing or suppressed data or value not calculated.

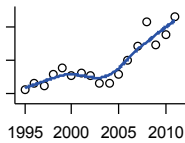
Employment

BEA EMPLOYMENT: FARM



U.S. Bureau of Economic Analysis,
Regional Economic Information System
(REIS)

Year	County	State of Kansas	Non Metro Kansas	County Rank	Per 1000 or \$ Per Capita
1995	995	78,389	59,402	21	34.2
1996	1,021	79,428	60,386	20	35.3
1997	1,030	79,441	60,240	20	35.6
1998	1,037	80,206	60,778	20	36.0
1999	1,043	80,473	61,055	20	36.6
2000	1,006	77,846	58,901	20	35.7
2001	980	78,134	58,953	26	35.3
2002	886	70,505	53,274	25	32.0
2003	862	68,516	51,521	24	31.3
2004	863	67,586	50,668	24	31.5
2005	854	66,814	49,788	23	31.0
2006	834	64,910	48,148	23	30.4
2007	849	65,787	48,559	23	30.9
2008	815	64,355	47,422	26	29.8
2009	794	63,417	46,662	27	28.8
2010	832	64,995	47,961	25	30.1
2011	874	66,600	49,312	21	31.5



BEA EMPLOYMENT: NON-FARM

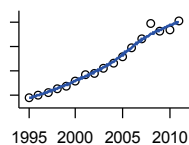
U.S. Bureau of Economic Analysis,
Regional Economic Information System
(REIS)

Year	County	State of Kansas	Non Metro Kansas	County Rank	Per 1000 or \$ Per Capita
1995	18,134	1,530,910	540,523	19	622.5
1996	18,327	1,562,362	545,932	18	633.8
1997	18,253	1,606,924	555,258	21	630.5
1998	18,571	1,654,245	564,664	21	645.1
1999	18,767	1,671,941	566,088	21	658.5
2000	18,549	1,693,372	569,415	21	657.6
2001	18,616	1,692,574	555,933	21	670.3
2002	18,552	1,677,933	554,286	21	670.1
2003	18,318	1,668,612	550,974	21	664.2
2004	18,311	1,678,954	551,060	21	668.5
2005	18,567	1,693,933	550,800	21	674.3
2006	18,996	1,729,419	562,045	21	691.8
2007	19,414	1,778,296	575,011	21	706.2
2008	20,133	1,795,764	580,103	19	737.1
2009	19,464	1,753,535	570,009	18	707.1
2010	19,764	1,741,798	572,885	18	714.2
2011	20,296	1,758,755	578,329	17	732.5

County: county value. Kansas: state value. County Rank: highest county value ranked #1. (\$000): thousands of dollars. Nonmetro Kansas: Kansas total less Metropolitan Areas as defined by the Office of Management and Budget (OMB; released 2/28/2013). Per 1000: For nonmoney amounts, Per 1000=(county value / county population for the same year as the data) x 1000. \$ Per capita=(county value / county population for the same year as the data). Value= . indicates missing or suppressed data or value not calculated.

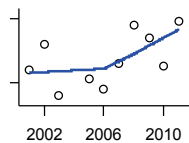
Employment

AVERAGE WAGE PER JOB (\$)



U.S. Bureau of Economic Analysis, Regional Economic Information System (REIS)

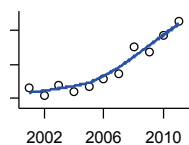
Year	County	State of Kansas	Non Metro Kansas	County Rank	Per 1000 or \$ Per Capita
1995	19,588	23,681	19,596	30	.
1996	19,997	24,534	20,021	29	.
1997	20,588	25,617	20,724	34	.
1998	21,433	26,812	21,483	33	.
1999	21,795	27,979	22,126	31	.
2000	23,068	29,377	23,209	31	.
2001	24,284	30,261	24,052	27	.
2002	24,573	31,030	24,612	30	.
2003	25,517	31,844	25,517	28	.
2004	26,612	33,235	26,490	30	.
2005	27,916	34,429	27,431	25	.
2006	29,739	36,339	28,911	21	.
2007	31,487	37,851	30,614	23	.
2008	34,693	39,091	32,089	15	.
2009	33,221	39,046	32,206	18	.
2010	33,526	39,824	33,049	21	.
2011	35,309	40,958	34,073	17	.



BEA EMPLOYMENT: FORESTRY, FISHING, HUNTING, AND AG SUPPORT

U.S. Bureau of Economic Analysis, Regional Economic Information System (REIS)

Year	County	State of Kansas	Non Metro Kansas	County Rank	Per 1000 or \$ Per Capita
2001	136	7,058	.	6	.
2002	148	8,015	.	5	.
2003	124	7,244	.	6	.
2004	.	7,544	.	.	.
2005	132	7,845	.	7	.
2006	127	7,705	.	7	.
2007	139	8,181	.	6	.
2008	157	8,486	.	7	.
2009	151	8,569	.	7	.
2010	138	8,793	.	8	.
2011	159	9,037	.	6	.



BEA EMPLOYMENT: MINING

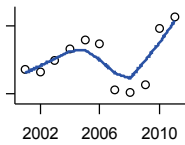
U.S. Bureau of Economic Analysis, Regional Economic Information System (REIS)

Year	County	State of Kansas	Non Metro Kansas	County Rank	Per 1000 or \$ Per Capita
2001	1,820	19,721	.	2	.
2002	1,607	17,410	.	2	.
2003	1,893	19,854	.	2	.
2004	1,686	18,246	.	2	.
2005	1,852	19,563	.	2	.
2006	2,075	22,285	.	2	.
2007	2,237	23,551	.	1	.
2008	3,040	31,478	.	2	.
2009	2,856	29,963	.	2	.
2010	3,353	36,183	.	2	.
2011	3,783	40,466	.	1	.

County: county value. Kansas: state value. County Rank: highest county value ranked #1. (\$000): thousands of dollars. Nonmetro Kansas: Kansas total less Metropolitan Areas as defined by the Office of Management and Budget (OMB; released 2/28/2013). Per 1000: For nonmoney amounts, Per 1000=(county value / county population for the same year as the data) x 1000. \$ Per capita=(county value / county population for the same year as the data). Value= . indicates missing or suppressed data or value not calculated.

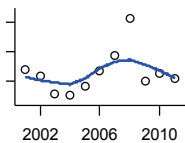
Employment

BEA EMPLOYMENT: UTILITIES



U.S. Bureau of Economic Analysis,
Regional Economic Information System
(REIS)

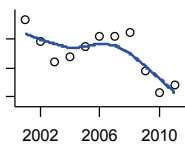
Year	County	State of Kansas	Non Metro Kansas	County Rank	Per 1000 or \$ Per Capita
2001	101	7,609	.	5	.
2002	100	7,066	.	5	.
2003	105	7,250	.	4	.
2004	110	7,350	.	4	.
2005	114	7,433	.	4	.
2006	112	7,476	.	4	.
2007	92	7,577	.	6	.
2008	91	7,855	.	7	.
2009	94	7,930	.	7	.
2010	119	8,015	.	6	.
2011	124	8,223	.	5	.



BEA EMPLOYMENT: CONSTRUCTION

U.S. Bureau of Economic Analysis,
Regional Economic Information System
(REIS)

Year	County	State of Kansas	Non Metro Kansas	County Rank	Per 1000 or \$ Per Capita
2001	1,138	93,169	28,549	16	.
2002	1,114	90,421	.	15	.
2003	1,053	91,839	27,318	16	.
2004	1,048	93,300	.	18	.
2005	1,079	95,214	.	17	.
2006	1,134	97,801	.	14	.
2007	1,187	99,612	30,221	15	.
2008	1,314	98,400	.	14	.
2009	1,098	91,138	29,345	16	.
2010	1,123	85,434	27,785	16	.
2011	1,105	82,906	26,976	16	.



BEA EMPLOYMENT: MANUFACTURING

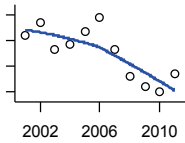
U.S. Bureau of Economic Analysis,
Regional Economic Information System
(REIS)

Year	County	State of Kansas	Non Metro Kansas	County Rank	Per 1000 or \$ Per Capita
2001	1,534	200,071	73,369	23	.
2002	1,381	189,025	70,693	25	.
2003	1,245	179,040	68,346	27	.
2004	1,276	181,671	69,652	27	.
2005	1,347	185,271	70,994	27	.
2006	1,415	188,195	71,673	26	.
2007	1,420	192,975	73,315	26	.
2008	1,445	193,092	72,224	25	.
2009	1,177	173,839	65,181	25	.
2010	1,029	166,149	63,488	26	.
2011	1,079	167,217	64,912	28	.

County: county value. Kansas: state value. County Rank: highest county value ranked #1. (\$000): thousands of dollars. Nonmetro Kansas: Kansas total less Metropolitan Areas as defined by the Office of Management and Budget (OMB; released 2/28/2013). Per 1000: For nonmoney amounts, Per 1000=(county value / county population for the same year as the data) x 1000. \$ Per capita=(county value / county population for the same year as the data). Value= . indicates missing or suppressed data or value not calculated.

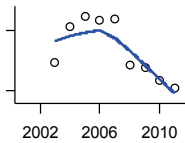
Employment

BEA EMPLOYMENT: WHOLESALE TRADE



U.S. Bureau of Economic Analysis,
Regional Economic Information System
(REIS)

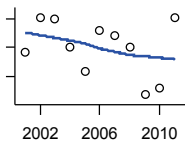
Year	County	State of Kansas	Non Metro Kansas	County Rank	Per 1000 or \$ Per Capita
2001	759	65,761	.	11	.
2002	786	65,375	.	9	.
2003	734	63,462	.	8	.
2004	743	64,440	.	8	.
2005	768	64,459	.	5	.
2006	795	64,773	.	5	.
2007	733	66,064	.	8	.
2008	680	67,822	.	11	.
2009	662	66,137	.	12	.
2010	651	64,628	.	10	.
2011	685	64,557	.	10	.



BEA EMPLOYMENT: RETAIL TRADE

U.S. Bureau of Economic Analysis,
Regional Economic Information System
(REIS)

Year	County	State of Kansas	Non Metro Kansas	County Rank	Per 1000 or \$ Per Capita
2001	.	198,827	.	.	.
2002	.	196,299	.	.	.
2003	2,340	194,768	66,552	15	.
2004	2,519	193,013	66,045	14	.
2005	2,567	191,062	65,499	14	.
2006	2,547	190,559	65,588	14	.
2007	2,556	191,038	65,154	13	.
2008	2,327	186,449	61,732	14	.
2009	2,315	182,014	60,821	14	.
2010	2,249	178,953	59,867	14	.
2011	2,211	179,262	59,297	14	.



BEA EMPLOYMENT: TRANSPORTATION AND WAREHOUSING

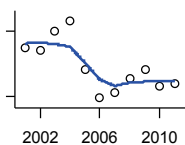
U.S. Bureau of Economic Analysis,
Regional Economic Information System
(REIS)

Year	County	State of Kansas	Non Metro Kansas	County Rank	Per 1000 or \$ Per Capita
2001	537	56,436	.	13	.
2002	561	55,326	.	13	.
2003	560	55,468	.	11	.
2004	540	55,395	.	11	.
2005	523	56,000	.	13	.
2006	552	57,467	.	11	.
2007	548	59,201	.	12	.
2008	540	58,578	.	13	.
2009	507	56,169	.	14	.
2010	512	55,278	.	14	.
2011	561	57,253	.	12	.

County: county value. Kansas: state value. County Rank: highest county value ranked #1. (\$000): thousands of dollars. Nonmetro Kansas: Kansas total less Metropolitan Areas as defined by the Office of Management and Budget (OMB; released 2/28/2013). Per 1000: For nonmoney amounts, Per 1000=(county value / county population for the same year as the data) x 1000. \$ Per capita=(county value / county population for the same year as the data). Value= . indicates missing or suppressed data or value not calculated.

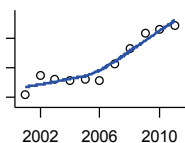
Employment

BEA EMPLOYMENT: INFORMATION



U.S. Bureau of Economic Analysis,
Regional Economic Information System
(REIS)

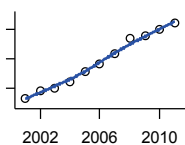
Year	County	State of Kansas	Non Metro Kansas	County Rank	Per 1000 or \$ Per Capita
2001	165	54,629	.	21	.
2002	162	50,218	.	19	.
2003	180	47,958	7,338	20	.
2004	190	45,146	.	19	.
2005	145	43,172	.	23	.
2006	118	43,596	.	27	.
2007	123	45,125	.	27	.
2008	136	42,956	.	24	.
2009	145	38,634	.	24	.
2010	129	33,406	.	25	.
2011	132	31,927	.	22	.



BEA EMPLOYMENT: FINANCE AND INSURANCE

U.S. Bureau of Economic Analysis,
Regional Economic Information System
(REIS)

Year	County	State of Kansas	Non Metro Kansas	County Rank	Per 1000 or \$ Per Capita
2001	1,023	76,463	.	12	.
2002	1,154	78,292	.	11	.
2003	1,121	78,631	.	11	.
2004	1,120	78,409	.	11	.
2005	1,124	78,807	.	12	.
2006	1,115	81,058	.	12	.
2007	1,230	86,228	.	12	.
2008	1,334	90,097	.	11	.
2009	1,437	93,999	.	11	.
2010	1,463	92,670	.	10	.
2011	1,492	96,569	.	10	.



BEA EMPLOYMENT: REAL ESTATE, RENTAL, AND LEASING

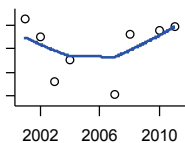
U.S. Bureau of Economic Analysis,
Regional Economic Information System
(REIS)

Year	County	State of Kansas	Non Metro Kansas	County Rank	Per 1000 or \$ Per Capita
2001	316	45,746	.	20	.
2002	345	45,076	.	18	.
2003	353	47,481	.	20	.
2004	372	50,171	.	19	.
2005	406	53,659	.	17	.
2006	434	55,748	.	19	.
2007	469	57,794	.	18	.
2008	522	57,967	.	16	.
2009	527	57,206	.	17	.
2010	551	59,815	.	16	.
2011	572	60,946	.	16	.

County: county value. Kansas: state value. County Rank: highest county value ranked #1. (\$000): thousands of dollars. Nonmetro Kansas: Kansas total less Metropolitan Areas as defined by the Office of Management and Budget (OMB; released 2/28/2013). Per 1000: For nonmoney amounts, Per 1000=(county value / county population for the same year as the data) x 1000. \$ Per capita=(county value / county population for the same year as the data). Value= . indicates missing or suppressed data or value not calculated.

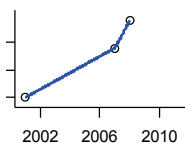
Employment

BEA EMPLOYMENT: PROFESSIONAL AND TECHNICAL SERVICES



U.S. Bureau of Economic Analysis, Regional Economic Information System (REIS)

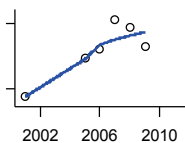
Year	County	State of Kansas	Non Metro Kansas	County Rank	Per 1000 or \$ Per Capita
2001	605	81,792	.	12	.
2002	590	80,192	.	12	.
2003	552	79,928	.	12	.
2004	571	84,446	.	15	.
2005	.	84,706	.	.	.
2006	.	87,230	.	.	.
2007	541	92,921	.	15	.
2008	592	95,591	.	14	.
2009	.	93,534	.	.	.
2010	595	93,430	.	15	.
2011	599	93,624	.	15	.



BEA EMPLOYMENT: MANAGEMENT OF COMPANIES AND ENTERPRISES

U.S. Bureau of Economic Analysis, Regional Economic Information System (REIS)

Year	County	State of Kansas	Non Metro Kansas	County Rank	Per 1000 or \$ Per Capita
2001	30	13,978	.	20	.
2002	.	13,158	.	.	.
2003	.	11,106	.	.	.
2004	.	10,624	.	.	.
2005	.	11,780	.	.	.
2006	.	13,005	.	.	.
2007	39	13,329	.	17	.
2008	44	15,191	.	18	.
2009	.	14,821	.	.	.
2010	.	16,515	.	.	.
2011	.	15,282	.	.	.



BEA EMPLOYMENT: ADMINISTRATIVE AND WASTE SERVICES

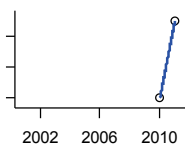
U.S. Bureau of Economic Analysis, Regional Economic Information System (REIS)

Year	County	State of Kansas	Non Metro Kansas	County Rank	Per 1000 or \$ Per Capita
2001	532	81,860	.	23	.
2002	.	82,940	.	.	.
2003	.	81,275	.	.	.
2004	.	85,190	.	.	.
2005	620	89,451	.	19	.
2006	642	93,714	.	20	.
2007	710	99,003	.	19	.
2008	692	97,618	.	19	.
2009	647	92,734	.	20	.
2010	.	94,129	.	.	.
2011	.	99,547	.	.	.

County: county value. Kansas: state value. County Rank: highest county value ranked #1. (\$000): thousands of dollars. Nonmetro Kansas: Kansas total less Metropolitan Areas as defined by the Office of Management and Budget (OMB; released 2/28/2013). Per 1000: For nonmoney amounts, Per 1000=(county value / county population for the same year as the data) x 1000. \$ Per capita=(county value / county population for the same year as the data). Value= . indicates missing or suppressed data or value not calculated.

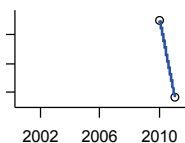
Employment

BEA EMPLOYMENT: EDUCATIONAL SERVICES



U.S. Bureau of Economic Analysis, Regional Economic Information System (REIS)

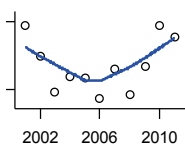
Year	County	State of Kansas	Non Metro Kansas	County Rank	Per 1000 or \$ Per Capita
2001	.	21,230	.	.	.
2002	.	22,176	.	.	.
2003	.	22,582	.	.	.
2004	.	21,608	.	.	.
2005	.	21,994	.	.	.
2006	.	22,417	.	.	.
2007	.	23,638	.	.	.
2008	.	24,658	.	.	.
2009	.	25,118	.	.	.
2010	102	25,979	.	17	.
2011	107	27,078	.	17	.



BEA EMPLOYMENT: HEALTH CARE AND SOCIAL ASSISTANCE

U.S. Bureau of Economic Analysis, Regional Economic Information System (REIS)

Year	County	State of Kansas	Non Metro Kansas	County Rank	Per 1000 or \$ Per Capita
2001	.	165,770	.	.	.
2002	.	168,291	.	.	.
2003	.	169,842	.	.	.
2004	.	172,839	.	.	.
2005	.	173,857	.	.	.
2006	.	177,131	.	.	.
2007	.	182,435	.	.	.
2008	.	186,386	.	.	.
2009	.	189,032	.	.	.
2010	2,420	188,517	.	14	.
2011	2,366	192,116	.	14	.



BEA EMPLOYMENT: ARTS, ENTERTAINMENT, AND RECREATION

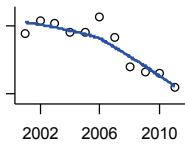
U.S. Bureau of Economic Analysis, Regional Economic Information System (REIS)

Year	County	State of Kansas	Non Metro Kansas	County Rank	Per 1000 or \$ Per Capita
2001	218	25,113	.	16	.
2002	205	25,573	.	18	.
2003	189	24,043	.	18	.
2004	196	25,190	.	19	.
2005	195	25,856	.	19	.
2006	186	26,457	.	19	.
2007	199	27,291	.	18	.
2008	188	27,517	.	18	.
2009	200	27,221	.	16	.
2010	218	27,429	.	17	.
2011	213	28,336	.	18	.

County: county value. Kansas: state value. County Rank: highest county value ranked #1. (\$000): thousands of dollars. Nonmetro Kansas: Kansas total less Metropolitan Areas as defined by the Office of Management and Budget (OMB; released 2/28/2013). Per 1000: For nonmoney amounts, Per 1000=(county value / county population for the same year as the data) x 1000. \$ Per capita=(county value / county population for the same year as the data). Value= . indicates missing or suppressed data or value not calculated.

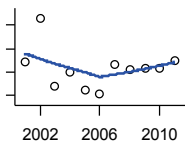
Employment

BEA EMPLOYMENT: GOVERNMENT AND GOVERNMENT ENTERPRISES



U.S. Bureau of Economic Analysis, Regional Economic Information System (REIS)

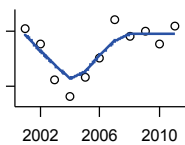
Year	County	State of Kansas	Non Metro Kansas	County Rank	Per 1000 or \$ Per Capita
2001	2,669	282,316	116,972	20	.
2002	2,726	285,660	118,342	20	.
2003	2,713	287,036	118,637	20	.
2004	2,676	283,772	118,612	20	.
2005	2,674	282,692	117,184	20	.
2006	2,742	288,202	120,345	20	.
2007	2,653	294,276	123,851	20	.
2008	2,519	298,378	125,344	20	.
2009	2,501	300,319	126,020	21	.
2010	2,495	303,602	127,594	21	.
2011	2,429	299,945	126,357	21	.



BEA EMPLOYMENT: ACCOMMODATION AND FOOD SERVICES

U.S. Bureau of Economic Analysis, Regional Economic Information System (REIS)

Year	County	State of Kansas	Non Metro Kansas	County Rank	Per 1000 or \$ Per Capita
2001	972	103,190	.	21	.
2002	1,064	103,487	.	20	.
2003	919	105,055	.	21	.
2004	951	106,622	.	21	.
2005	913	107,190	.	21	.
2006	905	109,936	.	22	.
2007	965	111,083	.	21	.
2008	954	111,368	.	21	.
2009	957	109,787	.	21	.
2010	959	109,333	.	21	.
2011	974	110,666	.	21	.



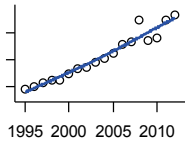
BEA EMPLOYMENT: OTHER SERVICES, EXCEPT PUBLIC ADMINISTRATION

U.S. Bureau of Economic Analysis, Regional Economic Information System (REIS)

Year	County	State of Kansas	Non Metro Kansas	County Rank	Per 1000 or \$ Per Capita
2001	1,043	91,835	.	17	.
2002	1,027	93,933	.	18	.
2003	987	94,750	32,951	17	.
2004	969	93,978	.	17	.
2005	991	93,922	32,876	18	.
2006	1,011	94,664	.	16	.
2007	1,053	96,974	.	18	.
2008	1,035	95,877	.	16	.
2009	1,040	95,371	.	17	.
2010	1,026	93,540	.	16	.
2011	1,046	93,798	.	14	.

County: county value. Kansas: state value. County Rank: highest county value ranked #1. (\$000): thousands of dollars. Nonmetro Kansas: Kansas total less Metropolitan Areas as defined by the Office of Management and Budget (OMB; released 2/28/2013). Per 1000: For nonmoney amounts, Per 1000=(county value / county population for the same year as the data) x 1000. \$ Per capita=(county value / county population for the same year as the data). Value= . indicates missing or suppressed data or value not calculated.

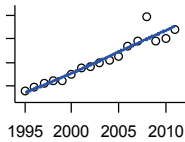
Income



BEA PER CAPITA PERSONAL INCOME (\$)

U.S. Bureau of Economic Analysis, Regional Economic Information System (REIS)

Year	County	State of Kansas	Non Metro Kansas	County Rank	Per 1000 or \$ Per Capita
1995	18,943	21,870	19,189	49	.
1996	20,297	23,255	20,581	52	.
1997	21,395	24,504	21,612	51	.
1998	22,518	26,032	22,563	50	.
1999	22,708	26,826	23,107	56	.
2000	24,605	28,468	23,985	42	.
2001	26,644	29,782	24,972	38	.
2002	27,274	29,895	24,700	24	.
2003	28,851	30,783	26,381	37	.
2004	30,415	31,961	27,100	18	.
2005	32,328	33,419	28,688	24	.
2006	35,873	35,973	30,178	10	.
2007	36,616	37,959	32,567	26	.
2008	44,681	40,598	35,733	8	.
2009	37,016	38,737	34,324	40	.
2010	37,839	38,787	34,747	38	.
2011	44,772	42,079	39,013	40	.
2012	46,582	43,015	38,845	19	.



SOURCES OF PERSONAL INCOME: TOTAL PERSONAL INCOME (\$000)

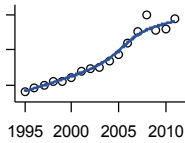
U.S. Bureau of Economic Analysis, Regional Economic Information System (REIS)

Year	County	State of Kansas	Non Metro Kansas	County Rank	Per 1000 or \$ Per Capita
1995	551,836	56,883,222	18,245,736	19	18,942.6
1996	586,896	60,802,316	19,615,216	19	20,297.3
1997	619,381	64,576,278	20,614,691	20	21,394.9
1998	648,294	69,260,889	21,596,087	20	22,518.0
1999	647,206	71,848,078	22,108,457	21	22,708.2
2000	692,964	76,684,081	23,013,801	21	24,568.8
2001	752,120	80,150,780	24,191,797	20	27,082.9
2002	759,583	80,704,843	23,727,577	20	27,437.6
2003	800,246	83,901,163	25,273,281	20	29,014.4
2004	819,272	87,176,582	25,671,535	21	29,911.4
2005	852,936	90,875,825	26,798,421	21	30,975.3
2006	941,729	98,577,190	28,095,966	20	34,294.6
2007	979,778	104,846,995	30,328,222	20	35,638.7
2008	1,192,707	113,632,720	33,573,834	16	43,666.5
2009	983,453	107,608,668	31,858,009	21	35,728.1
2010	1,003,350	110,205,217	32,802,725	21	36,256.1
2011	1,079,824	117,385,786	35,677,996	21	38,970.2

County: county value. Kansas: state value. County Rank: highest county value ranked #1. (\$000): thousands of dollars. Nonmetro Kansas: Kansas total less Metropolitan Areas as defined by the Office of Management and Budget (OMB; released 2/28/2013). Per 1000: For nonmoney amounts, Per 1000=(county value / county population for the same year as the data) x 1000. \$ Per capita=(county value / county population for the same year as the data). Value= . indicates missing or suppressed data or value not calculated.

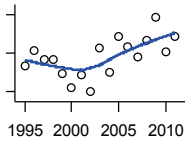
Income

**SOURCES OF PERSONAL INCOME:
WAGES AND SALARIES (\$000)**



U.S. Bureau of Economic Analysis,
Regional Economic Information System
(REIS)

Year	County	State of Kansas	Non Metro Kansas	County Rank	Per 1000 or \$ Per Capita
1995	278,425	30,336,720	8,739,176	20	9,557.4
1996	292,022	32,161,729	9,060,749	20	10,099.3
1997	298,977	34,582,641	9,518,034	21	10,327.4
1998	310,536	37,320,397	10,010,852	21	10,786.2
1999	309,661	39,441,538	10,326,356	22	10,864.9
2000	321,547	41,769,221	10,813,613	22	11,400.4
2001	339,098	43,259,543	11,101,187	21	12,210.5
2002	347,483	43,929,369	11,334,746	21	12,551.8
2003	348,404	44,527,878	11,581,916	21	12,632.0
2004	368,686	46,721,821	12,072,075	21	13,460.6
2005	388,119	48,573,383	12,415,634	21	14,095.0
2006	419,346	52,140,628	13,302,415	21	15,271.2
2007	450,950	55,592,667	14,352,915	21	16,403.0
2008	500,724	57,776,594	15,085,240	21	18,332.1
2009	455,962	55,780,092	14,696,392	21	16,564.8
2010	459,005	56,332,361	15,011,488	21	16,586.1
2011	489,914	58,367,960	15,594,981	20	17,680.7



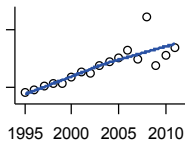
**SOURCES OF PERSONAL INCOME:
PROPRIETORS-FARM (\$000)**

U.S. Bureau of Economic Analysis,
Regional Economic Information System
(REIS)

Year	County	State of Kansas	Non Metro Kansas	County Rank	Per 1000 or \$ Per Capita
1995	6,808	538,817	517,479	36	233.7
1996	10,591	1,230,859	1,044,938	43	366.3
1997	8,422	1,117,873	945,314	49	290.9
1998	8,237	968,067	916,071	53	286.1
1999	4,734	1,082,610	1,045,664	70	166.1
2000	1,021	660,469	668,589	78	36.2
2001	4,541	766,004	760,582	60	163.5
2002	131	128,010	169,314	57	4.7
2003	11,255	1,281,144	1,176,202	54	408.1
2004	5,129	1,188,689	946,933	74	187.3
2005	14,417	1,580,730	1,409,237	47	523.6
2006	11,670	780,686	635,035	24	425.0
2007	9,119	1,045,179	950,411	58	331.7
2008	13,523	1,961,351	1,666,312	60	495.1
2009	19,210	1,769,282	1,516,811	39	697.9
2010	10,384	1,753,952	1,599,374	67	375.2
2011	14,339	3,169,110	2,871,089	71	517.5

County: county value. Kansas: state value. County Rank: highest county value ranked #1. (\$000): thousands of dollars. Nonmetro Kansas: Kansas total less Metropolitan Areas as defined by the Office of Management and Budget (OMB; released 2/28/2013). Per 1000: For nonmoney amounts, Per 1000=(county value / county population for the same year as the data) x 1000. \$ Per capita=(county value / county population for the same year as the data). Value= . indicates missing or suppressed data or value not calculated.

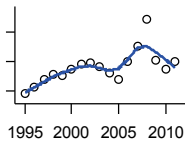
Income



**SOURCES OF PERSONAL INCOME:
PROPRIETORS-NONFARM (\$000)**

U.S. Bureau of Economic Analysis,
Regional Economic Information System
(REIS)

Year	County	State of Kansas	Non Metro Kansas	County Rank	Per 1000 or \$ Per Capita
1995	36,612	4,280,871	1,504,663	19	1,256.8
1996	42,911	4,675,593	1,626,605	18	1,484.0
1997	51,719	5,053,681	1,838,421	16	1,786.5
1998	59,274	5,560,771	1,948,370	16	2,058.8
1999	60,492	5,834,283	1,955,765	15	2,122.5
2000	76,766	6,566,601	2,047,459	14	2,721.7
2001	89,482	7,349,697	2,219,031	14	3,222.1
2002	85,423	7,220,642	2,162,649	14	3,085.6
2003	107,088	7,707,452	2,326,960	12	3,882.7
2004	116,418	8,456,294	2,489,657	12	4,250.4
2005	125,158	8,747,179	2,575,928	12	4,545.2
2006	144,179	9,445,306	2,706,802	12	5,250.5
2007	121,803	8,904,688	2,567,176	12	4,430.5
2008	231,791	9,437,514	2,887,589	7	8,486.2
2009	104,445	7,957,222	2,446,188	12	3,794.4
2010	133,808	9,398,192	2,821,837	12	4,835.2
2011	150,728	9,854,584	2,979,229	10	5,439.7



**SOURCES OF PERSONAL INCOME:
DIVIDENDS,INTEREST,RENT(\$000)**

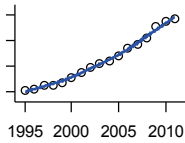
U.S. Bureau of Economic Analysis,
Regional Economic Information System
(REIS)

Year	County	State of Kansas	Non Metro Kansas	County Rank	Per 1000 or \$ Per Capita
1995	120,256	10,887,451	3,715,085	14	4,128.0
1996	130,720	11,786,963	3,990,689	13	4,520.8
1997	145,141	12,645,622	4,271,616	12	5,013.5
1998	153,736	13,897,283	4,575,532	12	5,339.9
1999	150,534	13,547,971	4,409,621	12	5,281.7
2000	162,895	14,646,833	4,751,624	12	5,775.4
2001	169,722	14,500,940	4,841,709	12	6,111.5
2002	172,246	14,007,476	4,475,234	12	6,221.9
2003	166,351	13,341,191	4,145,667	12	6,031.4
2004	155,253	13,611,288	4,059,038	12	5,668.2
2005	145,355	13,951,700	4,057,291	12	5,278.7
2006	174,450	17,169,551	4,750,765	14	6,352.9
2007	200,844	19,332,796	5,516,839	13	7,305.5
2008	245,215	22,551,184	6,515,385	12	8,977.6
2009	175,893	17,519,782	5,115,258	13	6,390.1
2010	161,650	17,031,502	5,041,794	14	5,841.2
2011	175,031	18,414,611	5,455,702	13	6,316.8

County: county value. Kansas: state value. County Rank: highest county value ranked #1. (\$000): thousands of dollars. Nonmetro Kansas: Kansas total less Metropolitan Areas as defined by the Office of Management and Budget (OMB; released 2/28/2013). Per 1000: For nonmoney amounts, Per 1000=(county value / county population for the same year as the data) x 1000. \$ Per capita=(county value / county population for the same year as the data). Value= . indicates missing or suppressed data or value not calculated.

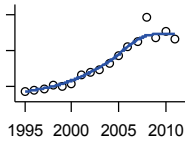
Income

**SOURCES OF PERSONAL INCOME:
TRANSFER PAYMENTS (\$000)**



U.S. Bureau of Economic Analysis,
Regional Economic Information System
(REIS)

Year	County	State of Kansas	Non Metro Kansas	County Rank	Per 1000 or \$ Per Capita
1995	102,281	7,713,715	3,332,656	15	3,511.0
1996	104,770	7,969,183	3,423,825	15	3,623.4
1997	109,939	8,360,290	3,581,613	15	3,797.5
1998	111,029	8,495,568	3,614,585	15	3,856.5
1999	114,381	8,864,785	3,744,836	15	4,013.2
2000	122,110	9,616,768	4,021,164	16	4,329.4
2001	130,853	10,504,871	4,348,092	17	4,711.9
2002	138,583	11,184,268	4,570,256	17	5,005.9
2003	143,937	11,648,841	4,705,420	17	5,218.7
2004	148,009	11,978,474	4,787,718	17	5,403.8
2005	155,401	12,636,443	5,035,430	16	5,643.6
2006	167,508	13,616,797	5,419,181	16	6,100.1
2007	174,703	14,610,974	5,739,071	17	6,354.7
2008	184,433	15,794,691	6,089,427	17	6,752.3
2009	201,010	17,903,610	6,756,312	18	7,302.6
2010	209,491	18,771,926	6,998,203	18	7,570.0
2011	212,945	19,309,788	7,190,114	19	7,685.0



**SOURCES OF PERSONAL INCOME:
LESS SOCIAL INSURANCE (\$000)**

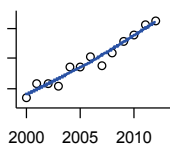
U.S. Bureau of Economic Analysis,
Regional Economic Information System
(REIS)

Year	County	State of Kansas	Non Metro Kansas	County Rank	Per 1000 or \$ Per Capita
1995	46,844	5,048,636	1,480,386	20	1,608.0
1996	48,073	5,279,272	1,503,010	20	1,662.6
1997	48,893	5,629,517	1,566,237	21	1,688.9
1998	50,436	6,024,492	1,628,348	21	1,751.9
1999	49,911	6,293,509	1,660,192	21	1,751.2
2000	51,635	6,598,934	1,713,775	21	1,830.7
2001	56,647	6,849,256	1,803,833	21	2,039.8
2002	57,946	6,972,099	1,842,567	21	2,093.1
2003	59,578	7,145,653	1,900,086	21	2,160.1
2004	62,975	7,495,417	1,978,706	21	2,299.2
2005	67,083	7,843,640	2,060,140	21	2,436.2
2006	71,813	8,350,178	2,187,529	21	2,615.2
2007	75,089	8,734,026	2,312,803	21	2,731.3
2008	88,423	9,128,279	2,456,394	18	3,237.3
2009	77,434	8,924,105	2,424,841	21	2,813.1
2010	80,389	9,200,291	2,532,490	21	2,904.9
2011	76,667	8,519,836	2,366,549	20	2,766.9

County: county value. Kansas: state value. County Rank: highest county value ranked #1. (\$000): thousands of dollars. Nonmetro Kansas: Kansas total less Metropolitan Areas as defined by the Office of Management and Budget (OMB; released 2/28/2013). Per 1000: For nonmoney amounts, Per 1000=(county value / county population for the same year as the data) x 1000. \$ Per capita=(county value / county population for the same year as the data). Value= . indicates missing or suppressed data or value not calculated.

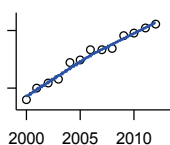
Income

HUD MEDIAN FAMILY INCOME



U.S. Department of Housing and Urban Development (HUD)

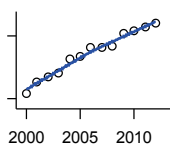
Year	County	State of Kansas	Non Metro Kansas	County Rank	Per 1000 or \$ Per Capita
2000	40,800	.	.	50	.
2001	43,300	.	.	44	.
2002	43,300	.	.	49	.
2003	42,800	.	.	62	.
2004	46,100	.	.	57	.
2005	46,100	.	.	63	.
2006	47,900	.	.	67	.
2007	46,200	.	.	68	.
2008	48,500	.	.	65	.
2009	50,400	.	.	63	.
2010	51,400	.	.	62	.
2011	53,200	.	.	59	.
2012	53,900	.	.	59	.



HUD 30% LOW-TO-MEDIUM INCOME (LMI) LIMIT - 4 PERSONS

U.S. Department of Housing and Urban Development (HUD)

Year	County	State of Kansas	Non Metro Kansas	County Rank	Per 1000 or \$ Per Capita
2000	12,350	.	.	105	.
2001	13,000	.	.	44	.
2002	13,250	.	.	105	.
2003	13,450	.	.	105	.
2004	14,300	.	.	105	.
2005	14,450	.	.	105	.
2006	14,950	.	.	105	.
2007	14,950	.	.	105	.
2008	15,050	.	.	105	.
2009	15,700	.	.	105	.
2010	15,850	.	.	105	.
2011	16,100	.	.	105	.
2012	16,300	.	.	105	.



HUD 50% LOW-TO-MEDIUM INCOME (LMI) LIMIT - 4 PERSONS

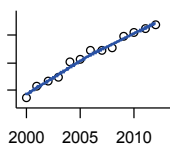
U.S. Department of Housing and Urban Development (HUD)

Year	County	State of Kansas	Non Metro Kansas	County Rank	Per 1000 or \$ Per Capita
2000	20,550	.	.	105	.
2001	21,650	.	.	44	.
2002	22,100	.	.	105	.
2003	22,450	.	.	105	.
2004	23,800	.	.	105	.
2005	24,050	.	.	105	.
2006	24,900	.	.	105	.
2007	24,900	.	.	105	.
2008	25,050	.	.	105	.
2009	26,150	.	.	105	.
2010	26,400	.	.	105	.
2011	26,850	.	.	105	.
2012	27,200	.	.	105	.

County: county value. Kansas: state value. County Rank: highest county value ranked #1. (\$000): thousands of dollars. Nonmetro Kansas: Kansas total less Metropolitan Areas as defined by the Office of Management and Budget (OMB; released 2/28/2013). Per 1000: For nonmoney amounts, Per 1000=(county value / county population for the same year as the data) x 1000. \$ Per capita=(county value / county population for the same year as the data). Value= . indicates missing or suppressed data or value not calculated.

Income

HUD 80% LOW-TO-MEDIUM INCOME (LMI) LIMIT - 4 PERSONS

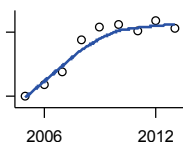


U.S. Department of Housing and Urban Development (HUD)

Year	County	State of Kansas	Non Metro Kansas	County Rank	Per 1000 or \$ Per Capita
2000	32,900	.	.	105	.
2001	34,650	.	.	44	.
2002	35,350	.	.	105	.
2003	35,900	.	.	105	.
2004	38,100	.	.	105	.
2005	38,500	.	.	105	.
2006	39,850	.	.	105	.
2007	39,850	.	.	105	.
2008	40,100	.	.	105	.
2009	41,850	.	.	105	.
2010	42,250	.	.	105	.
2011	42,950	.	.	105	.
2012	43,500	.	.	105	.

Banking

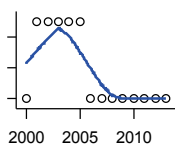
BANK DEPOSITS (1984-2004 in thousands; 2005- in millions)



Federal Deposit Insurance Corporation, Data Book, Operating Banks and Branches

Year	County	State of Kansas	Non Metro Kansas	County Rank	Per 1000 or \$ Per Capita
2005	699	48,304	17,143	10	25.4
2006	727	50,668	17,756	10	26.5
2007	758	54,057	18,736	11	27.6
2008	832	57,869	19,826	10	30.5
2009	863	57,763	20,212	10	31.4
2010	869	60,031	20,868	11	31.4
2011	853	61,094	21,546	11	30.8
2012	879	62,910	22,701	11	31.9
2013	859	64,547	23,025	12	31.2

NUMBER OF BANKS



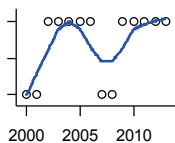
Federal Deposit Insurance Corporation, Data Book, Operating Banks and Branches

Year	County	State of Kansas	Non Metro Kansas	County Rank	Per 1000 or \$ Per Capita
2000	9	410	146	27	.
2001	10	410	137	22	.
2002	10	404	130	22	.
2003	10	397	123	22	.
2004	10	736	456	22	.
2005	10	388	105	23	.
2006	9	385	98	27	.
2007	9	382	96	27	.
2008	9	378	87	27	.
2009	9	374	84	27	.
2010	9	367	75	27	.
2011	9	359	66	27	.
2012	9	348	62	26	.
2013	9	332	50	26	.

County: county value. Kansas: state value. County Rank: highest county value ranked #1. (\$000): thousands of dollars. Nonmetro Kansas: Kansas total less Metropolitan Areas as defined by the Office of Management and Budget (OMB; released 2/28/2013). Per 1000: For nonmoney amounts, Per 1000=(county value / county population for the same year as the data) x 1000. \$ Per capita=(county value / county population for the same year as the data). Value= . indicates missing or suppressed data or value not calculated.

Banking

NUMBER OF BANKING OFFICES

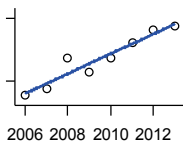


Federal Deposit Insurance Corporation, Data Book, Operating Banks and Branches

Year	County	State of Kansas	Non Metro Kansas	County Rank	Per 1000 or \$ Per Capita
2000	20	1,398	709	15	.
2001	20	1,424	714	15	.
2002	21	1,447	711	13	.
2003	21	1,461	716	14	.
2004	21	1,485	716	14	.
2005	21	1,505	721	15	.
2006	21	1,518	722	15	.
2007	20	1,543	729	16	.
2008	20	1,556	729	16	.
2009	21	1,569	729	15	.
2010	21	1,561	723	14	.
2011	21	1,559	720	15	.
2012	21	1,533	713	15	.
2013	21	1,518	707	15	.

Government

TANGIBLE ASSESSED VALUATION
(KDoR, million\$; 2006-)



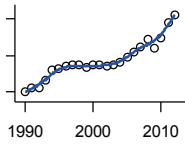
Kansas Department of Revenue, Division of Property Valuation, Statistical Report of Property Assessment and Taxation

Year	County	State of Kansas	Non Metro Kansas	County Rank	Per 1000 or \$ Per Capita
2006	206.4	28,964.3	10,354.3	28	7.5
2007	213.3	30,086.9	10,406.6	29	7.8
2008	242.0	31,000.3	10,943.3	25	8.9
2009	228.6	30,312.3	10,650.1	27	8.3
2010	242.3	29,450.2	10,265.0	23	8.8
2011	257.3	29,963.6	10,681.3	21	9.3
2012	268.7	30,382.9	10,996.3	20	9.7
2013	272.8	30,850.2	11,163.9	19	9.9

County: county value. Kansas: state value. County Rank: highest county value ranked #1. (\$000): thousands of dollars. Nonmetro Kansas: Kansas total less Metropolitan Areas as defined by the Office of Management and Budget (OMB; released 2/28/2013). Per 1000: For nonmoney amounts, Per 1000=(county value / county population for the same year as the data) x 1000. \$ Per capita=(county value / county population for the same year as the data). Value= . indicates missing or suppressed data or value not calculated.

Government

SALES TAX COLLECTIONS (\$)

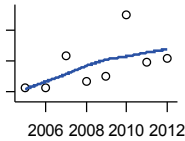


Kansas Department of Revenue

Year	County	State of Kansas	Non Metro Kansas	County Rank	Per 1000 or \$ Per Capita
1990	9,994,947	774,644,035	322,901,293	10	340,172.5
1991	10,898,987	813,200,470	348,677,028	10	371,421.3
1992	10,824,279	726,680,252	234,875,545	10	365,858.1
1993	12,996,754	937,521,908	296,141,083	11	441,525.8
1994	15,862,976	1,157,663,992	369,236,280	14	540,236.9
1995	16,156,007	1,212,060,210	386,457,047	13	554,579.4
1996	17,077,714	1,286,136,133	404,508,834	13	590,617.8
1997	17,348,633	1,354,385,699	417,767,747	13	599,261.9
1998	17,183,377	1,422,059,125	425,704,644	15	596,852.3
1999	16,678,222	1,452,454,592	423,545,696	16	585,180.2
2000	17,194,110	1,475,831,819	441,551,059	15	609,612.1
2001	17,196,042	1,481,026,695	434,871,136	15	619,208.6
2002	17,116,483	1,561,316,830	453,007,822	17	618,280.7
2003	17,272,080	1,626,782,969	471,668,000	17	626,231.1
2004	18,099,672	1,691,898,947	491,598,414	16	660,813.1
2005	19,313,204	1,744,980,297	508,787,995	16	701,380.2
2006	20,906,273	1,851,694,747	547,001,040	15	761,335.5
2007	22,275,056	1,917,546,786	574,948,973	14	810,237.7
2008	24,636,057	1,990,655,688	606,298,396	13	901,957.1
2009	21,808,365	1,866,223,078	565,475,017	14	792,282.4
2010	24,935,630	2,075,193,413	637,201,077	14	901,049.0
2011	29,238,272	2,347,193,367	723,576,813	14	1,055,190.4
2012	31,123,111	2,456,292,294	761,760,944	14	1,128,589.4

Crime

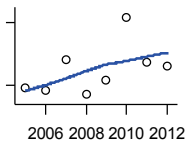
CRIME INDEX OFFENSES



Kansas Bureau of Investigation, Note: Data are aggregated from data reported by individual police departments and subject to be incomplete.

Year	County	State of Kansas	Non Metro Kansas	County Rank	Per 1000 or \$ Per Capita
2005	1,013	111,856	32,671	19	36.8
2006	1,014	110,032	.	18	36.9
2007	1,118	111,035	30,760	18	40.7
2008	1,033	93,996	28,383	17	37.8
2009	1,052	98,757	28,437	17	38.2
2010	1,251	98,354	27,585	14	45.2
2011	1,098	96,638	26,434	17	39.6
2012	1,110	98,914	27,728	16	40.3

PROPERTY CRIMES



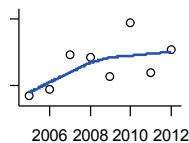
Kansas Bureau of Investigation, Note: Data are aggregated from data reported by individual police departments and subject to be incomplete.

Year	County	State of Kansas	Non Metro Kansas	County Rank	Per 1000 or \$ Per Capita
2005	943	101,414	29,927	19	34.2
2006	938	99,110	.	18	34.2
2007	1,011	99,632	27,539	18	36.8
2008	928	83,964	25,233	17	34.0
2009	964	87,658	25,487	17	35.0
2010	1,114	87,926	24,638	14	40.3
2011	1,007	86,547	23,804	17	36.3
2012	998	88,707	24,813	16	36.2

County: county value. Kansas: state value. County Rank: highest county value ranked #1. (\$000): thousands of dollars. Nonmetro Kansas: Kansas total less Metropolitan Areas as defined by the Office of Management and Budget (OMB; released 2/28/2013). Per 1000: For nonmoney amounts, Per 1000=(county value / county population for the same year as the data) x 1000. \$ Per capita=(county value / county population for the same year as the data). Value= . indicates missing or suppressed data or value not calculated.

Crime

VIOLENT CRIMES

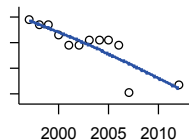


Kansas Bureau of Investigation, Note: Data are aggregated from data reported by individual police departments and subject to be incomplete.

Year	County	State of Kansas	Non Metro Kansas	County Rank	Per 1000 or \$ Per Capita
2005	70	10,442	2,744	22	2.5
2006	76	10,922	.	21	2.8
2007	107	11,403	3,221	22	3.9
2008	105	10,032	3,150	19	3.8
2009	88	11,099	2,950	22	3.2
2010	137	10,428	2,947	15	5.0
2011	91	10,091	2,630	19	3.3
2012	112	10,207	2,915	19	4.1

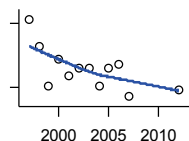
Agriculture

NUMBER OF FARMS



Kansas Agricultural Statistics, Kansas Farm Facts

Year	County	State of Kansas	Non Metro Kansas	County Rank	Per 1000 or \$ Per Capita
1997	820	64,000	47,350	24	28.3
1998	810	65,000	48,290	26	28.1
1999	810	65,000	48,290	26	28.4
2000	790	64,000	47,500	26	28.0
2001	770	63,000	46,670	29	27.7
2002	770	63,000	46,670	29	27.8
2003	780	64,500	47,570	29	28.3
2004	780	64,500	47,570	29	28.5
2005	780	64,500	47,570	29	28.3
2006	770	64,000	47,070	29	28.0
2007	678	65,531	47,532	37	24.7
2012	694	61,773	45,085	32	25.2



TOTAL ACRES HARVESTED

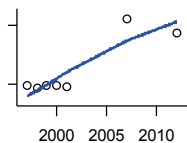
Kansas Agricultural Statistics, Kansas Farm Facts

Year	County	State of Kansas	Non Metro Kansas	County Rank	Per 1000 or \$ Per Capita
1997	383,620	22,846,000	19,181,890	6	13,251.1
1998	358,300	22,143,500	18,708,130	7	12,445.3
1999	320,460	21,708,900	18,340,040	12	11,243.8
2000	345,620	21,639,000	18,313,340	8	12,253.9
2001	330,620	21,847,900	18,495,540	9	11,905.2
2002	337,550	20,230,400	16,878,370	6	12,193.0
2003	338,140	21,827,700	18,444,130	8	12,259.9
2004	320,800	20,876,900	17,514,970	7	11,712.3
2005	338,130	21,936,500	18,598,050	7	12,279.6
2006	341,520	21,412,700	18,070,400	7	12,437.0
2007	310,717	19,886,655	17,022,701	8	11,302.1
2012	317,667	21,043,596	17,750,237	9	11,519.3

County: county value. Kansas: state value. County Rank: highest county value ranked #1. (\$000): thousands of dollars. Nonmetro Kansas: Kansas total less Metropolitan Areas as defined by the Office of Management and Budget (OMB; released 2/28/2013). Per 1000: For nonmoney amounts, Per 1000=(county value / county population for the same year as the data) x 1000. \$ Per capita=(county value / county population for the same year as the data). Value= . indicates missing or suppressed data or value not calculated.

Agriculture

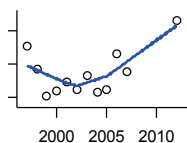
VALUE: LIVESTOCK AND POULTRY (\$000)



Kansas Agricultural Statistics, Kansas Farm Facts

Year	County	State of Kansas	Non Metro Kansas	County Rank	Per 1000 or \$ Per Capita
1997	48,193	2,806,445	2,493,369	15	1,664.7
1998	39,110	2,670,432	2,371,235	16	1,358.5
1999	46,506	2,849,061	2,546,358	14	1,631.7
2000	46,158	2,901,469	2,601,622	15	1,636.5
2001	43,683	2,693,274	2,427,320	11	1,573.0
2007	217,537	9,525,971	.	9	7,912.7
2012	182,757	11,476,571	10,871,282	15	6,627.2

VALUE: FIELD CROPS (\$000) EXCLUDING GOVERNMENT PROGRAM PAYMENTS



Kansas Agricultural Statistics, Kansas Farm Facts

Year	County	State of Kansas	Non Metro Kansas	County Rank	Per 1000 or \$ Per Capita
1997	81,031	4,474,942	3,765,746	8	2,799.0
1998	67,431	3,594,319	3,101,461	5	2,342.2
1999	51,073	3,118,193	2,702,523	13	1,792.0
2000	54,426	2,915,660	2,518,540	8	1,929.7
2001	59,554	3,283,117	2,838,667	6	2,144.5
2002	54,949	3,011,855	2,533,782	10	1,984.9
2003	62,934	3,623,255	3,118,639	10	2,281.8
2004	53,428	3,445,688	2,870,199	16	1,950.6
2005	55,208	3,678,123	3,155,033	15	2,004.9
2006	76,621	4,308,716	3,645,054	8	2,790.3
2007	65,249	4,887,212	.	24	2,373.4
2012	96,206	6,983,993	5,983,653	24	3,488.6

County: county value. Kansas: state value. County Rank: highest county value ranked #1. (\$000): thousands of dollars. Nonmetro Kansas: Kansas total less Metropolitan Areas as defined by the Office of Management and Budget (OMB; released 2/28/2013). Per 1000: For nonmoney amounts, Per 1000=(county value / county population for the same year as the data) x 1000. \$ Per capita=(county value / county population for the same year as the data). Value= . indicates missing or suppressed data or value not calculated.